

**Q U A L I T Y**

**CCTF** is engaged in the supply and distribution of pipe, pipe hangers, fittings, flanges and grooved products of various types and for a wide range of applications. Many CCTF products are installed by the power generation, petrochemical and process industries for which the governing codes and standards require considerable control, inspection and testing to verify the quality characteristics. To deal with these challenges, CCTF has implemented a quality program to the degree necessary to satisfy the contractors and owners, with emphasis put on areas such as review, purchasing, inspection and corrective / preventative action.

CCTF has established and maintains a documented Quality Management System in an effort to conform to product jurisdiction, customer requirements, and affect a continuous Quality Improvement Program. The Quality Management System reflects the philosophy and policy of CCTF in achievement of Total Quality and is designed to meet the requirements of ISO 9001-2000 Quality Standards. CCTF's experience in supplying significant projects demanding consistent quality products include Hibernia, Sable Offshore Energy Project, Terra Nova Alliance Project and the Irving Refinery Project. Current ISO Certificates of registration are available upon request.

## CONTENTS

HANGER COMPARISON LIST .....	4-5
PICTORIAL INDEX .....	6-10
ZINC PLATING PROCESS .....	11

### STANDARD & COMMERCIAL PIPE HANGERS

A 100 Adjustable Swivel Ring Hanger .....	13
A 250 C Copper Plated Swivel Ring Hanger .....	14
A 275E Epoxy Coated Swivel Ring Hanger .....	15
A 210 Light Duty Clevis Hanger .....	16
A 280E Light Duty Epoxy Coated Clevis Hanger .....	17
A 310 C Light Duty Copper Clevis Hanger .....	18
A 235 Standard Clevis Hanger .....	19
A 235 SS Stainless Steel Standard Clevis Hanger .....	20
A 150 Standard Riser Clamp .....	21
A 325 C Copper Plated Riser Clamp .....	22
A 410 C-Clamp .....	23
A 50 Zinc Plated 2- Hole Pipe Strap .....	24
A 58 Heavy Duty Black Short Strap .....	25
A 131 Split Ring Hanger - Hinged .....	26
A 131C Copper Plated Split Ring Hanger - Hinged .....	27
A 131R Rubber Lined Split Ring Hanger .....	28
A 132 One Hole Clamp .....	29
A 500 Offset Pipe Clamp .....	30

### FIRE PROTECTION AND WATERWORKS HANGERS

A 100 Adjustable Swivel Ring Hanger .....	32
A 150 Standard Riser Clamp .....	33
A 235 Standard Clevis Hanger .....	34
A 450 Steel Rod Couplings .....	35
A 22Z Zinc Plated Ceiling Flange .....	36
A 350 Side Beam Bracket .....	37
A 05 Wood Drive Screws .....	38
A 01/02 Swivel Nuts .....	39
A 425 Coach Screw Rod .....	40
A 926 All Threaded Rod – Zinc Plated .....	41
B 20 Top Beam Clamp - Standard .....	42
B 24 Top Beam Clamp - Wide Mouth .....	43
A 122 Underground Bell Clamp for Ductile Iron Pipe .....	44
A 920 Clevis Hanger for Ductile Iron Pipe .....	45

### INDUSTRIAL HANGERS AND CLAMPS

A 320 Pipe Roller .....	47
A 466 Standard Roller Hanger .....	48
A 469 Standard Roller Chair .....	49
A 494 Single Pipe Roll .....	50
A 497 Adjustable Pipe Roller Support .....	51

## CONTENTS

A 125 Standard 2-Bolt Pipe Clamp . . . . .	52
A 430 Heavy Duty 2-Bolt Pipe Clamp . . . . .	53
A 125SS Standard 2-Bolt Pipe Clamp Stainless Steel . . . . .	54
A 235SS Stainless Steel Standard Clevis Hanger . . . . .	55
A56 3-Bolt Light Duty Pipe Clamp . . . . .	56
A 62 Std. 3-Bolt Pipe Clamp . . . . .	57
A 900 Pipe Shoe . . . . .	58
A 475 Standard U-Bolts Black . . . . .	59
A 175 Standard U-Bolts Zinc Plated . . . . .	60
A 175SS U-Bolts Stainless Steel . . . . .	61
A 333 Turnbuckle . . . . .	62
A 339 Forged Steel Clevis. . . . .	63
A 344 Weldless Eye Nut . . . . .	64
A 80/84 Pipe Protection Saddle 1" & 1-1/2" . . . . .	65
A 88/90 Pipe Protection Saddle 2" & 2-1/2" . . . . .	66
A 92/95 Pipe Protection Saddle 3" & 4" . . . . .	67
A 203 Insulation Protection Shield . . . . .	68

### HANGERS ATTACHMENTS AND STRUT PRODUCTS

A 240 Standard Pipe Stay . . . . .	70
A 245 Extended Pipe Stay . . . . .	71
A 330 Heavy Duty Beam Attachment – Less Bolt . . . . .	72
A 330-B Heavy Duty Beam Attachment with Bolt . . . . .	73
A 350 Side Beam Bracket . . . . .	74
A 22Z Zinc Plated Ceiling Flange. . . . .	75
A U927 Strut Channel (1-5/8" x 1-5/8" x 10") . . . . .	76
U 935 Q-Deck Hanger . . . . .	77
A U929 Spring Nut with spring . . . . .	78
A U931 Strut Clamp . . . . .	79

### THREADED PRODUCTS

A 926 All Threaded Rod Zinc Plated . . . . .	81
A 925SS All Threaded Rod Stainless Steel . . . . .	82
A 425 Coach Screw Rod . . . . .	83
A 450 Steel Rod Couplings . . . . .	84
A W921 Machine Thread Rods Left and Right Threads . . . . .	85
A W922 Welded Eye Rod Right Hand Thread. . . . .	86
A W923 Hanger Rod Right Hand Thread . . . . .	87
A 01/02 Swivel Nuts . . . . .	88
A 05 Wood Drive Screws . . . . .	89

## CROSS REFERENCE

DESCRIPTION	CCTF	ANVIL	TAYLOR	MYATT
ADJ. SWIVEL RING HANGER	A 100	69	41	41
ADJ. SWIVEL RING HANGER COPPER	A 250 C	CT 69	42	42
ADJ. SWIVEL RING HANGER EPOXY	A 275 E	69 C	43	43
LIGHT DUTY CLEVIS HANGER	A 210	65	22 Z	122
LIGHT DUTY CLEVIS HANGER EPOXY	A 280 E		52	56
LIGHT DUTY CLEVIS HANGER COPPER	A 310C			
STANDARD CLEVIS HANGER	A 235	260	24 Z	124
STANDARD CLEVIS HANGER SS MATERIAL	A 235SS			
STANDARD RISER CLAMP	A 150	261	82 Z	182
COPPER RISER CLAMP	A 325	C.T. 121	85	150 CT
MALLEABLE IRON C CLAMP	A 410	86	301	586
2 HOLE PIPE STRAP	A 50	231	45	163
MALLEABLE IRON SLIT RING HANGER	A 131	138 R	38 R	129
HEAVY DUTY SHORT STRAP	A 58	262	46	162
OFFSET PIPE CLAMP	A 500	103		
ONE HOLE PIPE CLAMP	A 132	126	44	160
SOLID COPPER PIPE STRAP	A 48			
STANDARD TOP BEAM CLAMP	A 375	92	406	406
WIDE MOUTH TOP BEAM CLAMP	A 400	93/94	407	407
UNDERGROUND BELL CLAMP	A 122	600	35	175
CLEVIS HANGER FOR D.I. PIPE	A 920		27 AC	127 AC
PIPE ROLLER ONLY	A.320	173	92	255
ADJUSTABLE SOCKET ENDS	A 46	171 A		
STANDARD ROLLER HANGER	A 466	181	93	255
STANDARD ROLLER CHAIR	A 469	175	94	264
SINGLE PIPE ROLL COMPLETE	A 494	171	95	261
ADJUSTABLE PIPE ROLL SUPPORT	A 497	177	95 S	262
STANDARD 2 BOLT PIPE CLAMP	A 125	212	31	133
STAINLESS STEEL 2 BOLT PIPE CLAMP	A 125 SS			
HEAVY 2 BOLT PIPE CLAMP	A 430	216		
LIGHT DUTY 3 BOLT PIPE CLAMP	A 56			
STANDARD 3 BOLT PIPECLAMP	A 62	295	33 M	136
ZINC PLATED STANDARD U BOLT	A 175	137	14 Z	414
BLACK STANDARD U BOLT	A 475	137	14	414

## CROSS REFERENCE

DESCRIPTION	CCTF	ANVIL	TAYLOR	MYATT
STANDARD STAINLESS STEEL U BOLT	A 175 SS			
FORGED STEEL TURNBUCKLE	A 333	230	68	475
FORGED STEEL CLEVIS	A 339	299	63	470
WELDLESS EYE NUT	A 344	290	64	480
PIPE COVERING PROTECTION SADDLES	A 80-95	160-167	69-75	210-251
INSULATION PROTECTION SHIELD	A 203			
STANDARD PIPE STAYS	A 240	32	32 S	326
EXTENDED PIPE STAYS	A 245	32	32 E	326
SIDE BEAM BRACKET	A 350	206	120	542
WELDED BEAM BRACKET	A 330	66	67	531
CEILING FLANGE	A 22Z	128 R	28 R	534
1 5/8" X 1 5/8" STRUT	A U 927			
STRUT NUTS W/ SPRING	A U 929		900 RG	
STRUT CLAMPS FOR PIPE	A U 931			
STRUT CLAMPS FOR O.D. TUBING	A U 932			
Q DECK HANGER	A U 935			
THREADED ROD BLACK	A 925			
THREADED ROD ZINC PLATED	A 926			
THREADED ROD STAINLESS STEEL	A 926SS			
COACH SCREW RODS	A 425	142	61	461
ROD COUPLING	A 450	135 E	62	463
MACHINE THREAD RODS	A W 921			
WELDED EYE ROD	A W 922			
HANGER ROD	A W 923			
SWIVEL NUT	A 01/02		41 A	
HEX NUT	A 03			
WASHERS	A 04			
DRIVE SCREWS	A 05		59	461

## PICTORIAL INDEX

### SECTION "A" STANDARD PIPE HANGERS



**A 100**  
Adjustable Ring  
Hanger  
page 13



**A 250C**  
Adjustable Ring  
Hanger  
Copper Plated  
page 14



**A 275E**  
Adjustable Ring  
Hanger  
Epoxy Coated  
page 15



**A 210**  
Light Duty Clevis  
Hanger  
page 16



**A 280E**  
Light Duty Clevis  
Hanger  
Epoxy Coated  
page 17



**A 310C**  
Light Duty Clevis  
Hanger  
Copper Coated  
page 18



**A 235**  
Standard Clevis  
Hanger  
page 19



**A 235SS**  
Standard Clevis  
Hanger  
Stainless Steel  
page 20



**A 150**  
Standard  
Riser Clamp  
page 21



**A 325C**  
Standard Riser Clamp  
Copper Plated  
page 22



**A 410**  
C-Clamp  
page 23



**A 50**  
Two Hole  
Pipe Strap  
page 24



**A 58**  
Heavy Duty Short  
Strap  
page 25



**A 500**  
Offset Pipe Clamp  
page 30



**A 132**  
One Hole Pipe  
Clamp  
page 29



**A 131**  
Split Ring Hanger  
Zinc Plated  
page 26



**A 131-C**  
Split Ring Hanger  
Copper Plated  
page 27



**A 131 R**  
Split Ring Hanger  
Rubber Lined  
page 28

## PICTORIAL INDEX

### SECTION "B" FIRE PROTECTION AND WATERWORKS



**A 100**  
Adj. Ring Hanger  
page 33



**A 235**  
Standard Clevis  
Hanger  
page 35



**A 150**  
Standard  
Riser Clamp  
page 34



**A 222**  
Ceiling Flange  
Zinc Plated  
page 37



**A 350**  
Side Beam Bracket  
Page 38



**A 425**  
Coach Screw Rods  
page 41



**A 05**  
Wood Drive Screws  
page 39



**A 01/02**  
Swivel Nut  
page 40



**A 926**  
All Threaded Rod Zinc  
Plated (10' lengths)  
page 42



**A 450**  
Steel Rod Couplings  
page 36



**B 20 Top Beam  
Clamp - Standard**  
page 43



**B 24 Top Beam  
Clamp - Wide Mouth**  
page 44



**A 122**  
Underground Bell  
Clamp for  
Ductile Iron Pipe  
page 45



**A 920**  
Clevis Hanger for D.I.  
Pipe  
page 46

## PICTORIAL INDEX

### SECTION "C" INDUSTRIAL PRODUCTS



**A 320**  
Pipe Roller  
page 48



**A 900**  
Pipeshoe  
page 59



**A 466**  
Standard Roller  
Hanger  
page 49



**A 469**  
Standard Roller Chair  
page 50



**A 494**  
Single Pipe Roll  
Complete  
page 51



**A 497**  
Adj. Pipe Roll Support  
page 52



**A 125**  
Standard  
2-Bolt Pipe Clamp  
page 53



**A 430**  
Heavy Duty  
2-Bolt Pipe Clamp  
page 54



**A 125SS Standard**  
2-Bolt Pipe Clamp  
Stainless Steel  
page 55



**A 235SS**  
Standard Clevis  
Hanger  
Stainless Steel  
page 56



**A 56**  
Light Duty  
3-Bolt Pipe Clamp  
page 57



**A 62**  
Standard  
3-Bolt Pipe Clamp  
page 58



**A 475**  
Standard  
U-Bolts Black  
page 60



**A 175**  
Standard  
U-Bolts Zinc Plated  
page 61



**A 175SS Standard**  
U-Bolts Stainless  
Steel  
page 62



**A 333**  
Turnbuckle  
page 63



**A 339**  
Forged Steel  
Clevis  
page 64



## PICTORIAL INDEX

### SECTION "C" INDUSTRIAL PRODUCTS (cont'd)



**A 344**  
Weldless Eye Nut  
page 65



**A 80-95**  
Pipe Protection  
Saddles  
page 66-68



**A 203**  
Insulation Protection  
Shield  
page 69

### SECTION "D" HANGER ATTACHMENTS & STRUT PRODUCTS



**A 240**  
Standard Pipe Stay  
page 71



**A 245**  
Extended Pipe Stay  
page 72



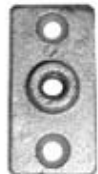
**A 350**  
Side Beam Bracket  
page 75



**A 330**  
Heavy Duty  
Beam Attachment  
page 73



**A 330B**  
Heavy Duty  
Beam Attachment  
page 74



**A 22Z**  
Ceiling Flange  
Zinc Plated  
page 76



**AU927**  
Strut Channel  
(1 5/8 x 1 5/8)  
page 78



**AU929**  
Spring Nut with  
Spring  
page 79



**U 935**  
Q Deck Hanger  
page 77

## PICTORIAL INDEX

### SECTION "E" THREADED PRODUCTS



**A 926**  
**All Threaded Rod Zinc**  
**Plated (10' lengths)**  
**page 83**



**A 926SS**  
**All Threaded Stainless Steel**  
**(10' lengths)**  
**page 84**



**A 425**  
**Coach Screw Rods**  
**page 85**



**A 450**  
**Steel Rod Couplings**  
**page 86**



**AW921**  
**Machine Thread Rods**  
**page 87**



**AW922**  
**Welded Eye Rod**  
**Right Hand Thread**  
**page 88**



**AW923**  
**Hanger Rod**  
**Right Hand Thread**  
**page 89**

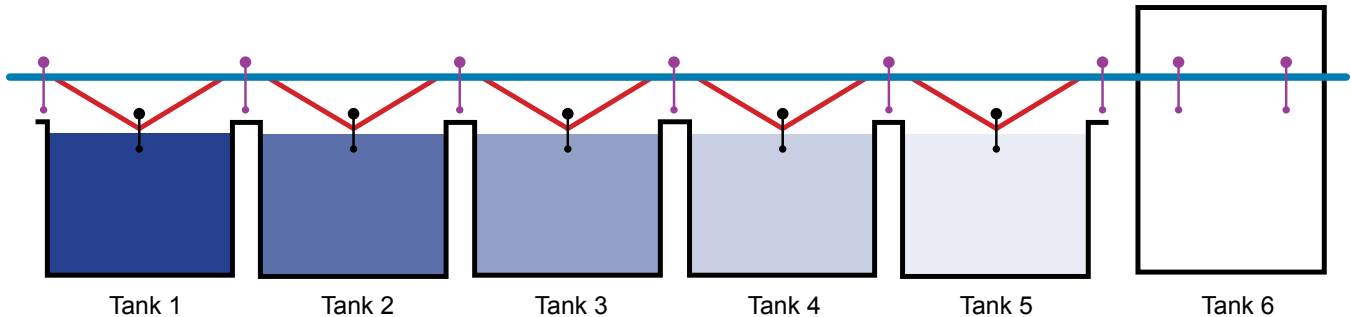


**A 01/02**  
**Swivel Nut**  
**page 90**



**A 05**  
**Wood Drive Screws**  
**page 91**

## ZINC PLATING PROCESS



### THE PROCESS

TANK 1	Rust removal by industrial chlorhydric acid and oil removal with lye.
TANK 2	Rinsing with water after oil and rust removal.
TANK 3	Product is placed in the tank for zinc coating.
TANK 4	Second rinse in water.
TANK 5	Passivation by chrome acid to produce sealing coat.
TANK 6	Finished product is then air dried.

### WELDING FEATURES

As in any welding situation, proper ventilation must be in place so that when welding, any fumes containing impurities are not inhaled.

Before welding any C.C.T.F. zinc plated pipe hangers, please check your local Workers Compensation Board welding procedures manual for ventilation requirements.



## **STANDARD & COMMERCIAL PIPE HANGERS**

Pipe hangers offered in this section are designed to support insulated or non- insulated pipe allowing for vertical adjustment and limited movement in the piping system.

---

**Material:** Carbon steel, malleable iron, and 316 stainless steel are used in the manufacturing of these pipe hangers. Other materials are also available.

---

**Finishes:** Our standard hangers are supplied with an Electro-Galv. Zinc Coating. Some hangers may be supplied with a standard oil coated finish that is regularly referred to in the industry as BLACK. Other coatings available are hot dipped galvanized, standard Zinc Oxide primer or painted to your specifications. When hot dipped galvanized is ordered standard ZINC PLATED threaded parts will be supplied unless you request differently.

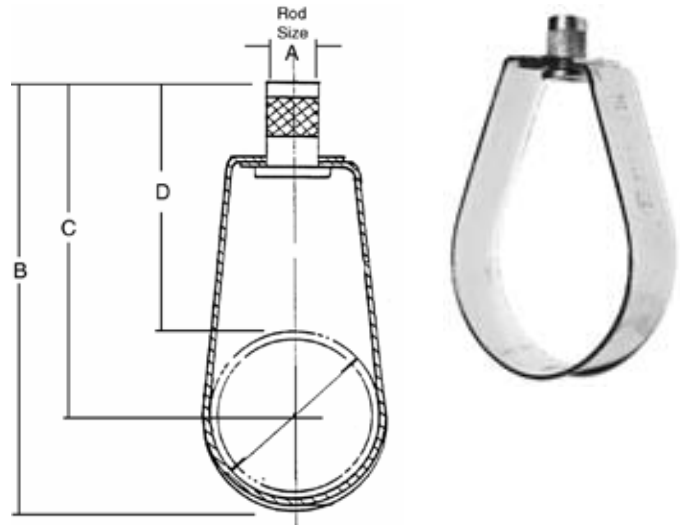
---

**Approvals:** Some items in this section are Underwriters Laboratory Listed and Factory Mutual Approved. All other items comply with Manufacturers Standardization Society MSS SP-69.

## STANDARD & COMMERCIAL PIPE HANGERS

### A 100 Adjustable Swivel Ring Hanger

Material:	Pre Galvanized Carbon Steel
Application:	Used for all general purpose and fire protection lines. The knurled nut allows for hanger alignment and adjustment after installation.
Approvals:	Underwriters Laboratory Listed, Factory Mutual Approved. Complies with Manufactures Standardization Society.
Ordering:	Specify figure number and pipe size.



### A 100 ADJUSTABLE SWIVEL RING HANGERS

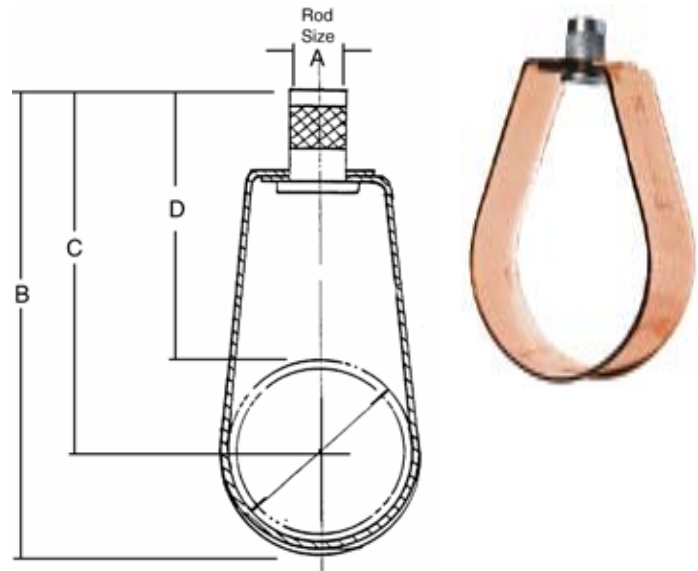
SIZE	"A"		"B"		"C"		"D"		Max Rec Load	Box Qty	
	mm		mm		mm		mm				
1/2	13	3/8	10	2-11/16	69	2-3/16	55	7/8	23	300	100
3/4	19	3/8	10	2-15/16	74	2-13/32	60	1-3/16	28	300	100
1	25	3/8	10	3-1/8	79	2-1/2	65	1-3/8	35	300	100
1-1/4	32	3/8	10	3-1/2	89	3	75	1-3/4	44	300	100
1-1/2	38	3/8	10	3-3/4	94	3-1/8	80	2	50	300	100
2	50	3/8	10	4-3/32	104	3-1/2	90	2-7/16	62	300	100
2-1/2	64	3/8	10	5-5/6	134	4-3/4	120	3	75	525	50
3	76	3/8	10	5-11/16	144	5-1/8	130	3-1/2	91	525	50
4	102	3/8	10	6-7/8	174	6-5/16	160	4-5/8	116	650	25
5	127	1/2	13	9-1/8	231	8-15/32	215	5-11/16	143	1,000	20
6	152	1/2	13	10-1/4	261	9-15/32	240	6-5/8	170	1,000	15
8	203	1/2	13	12-1/2	316	11-3/4	300	8-11/16	221	1,000	10



## STANDARD & COMMERCIAL PIPE HANGERS

### A 250 C Copper Plated Swivel Ring Hanger

Material:	Copper electroplated Carbon Steel.
Application:	Designed for supporting non – insulated copper pipe lines.
Ordering:	Specify figure number and pipe size.



### A 250C COPPER PLATED SWIVEL RING HANGER

SIZE	"A"		"B"		"C"		"D"		Max Rec Load	Box Qty	
	mm		mm		mm		mm				
1/2	13	3/8	10	3-1/8	79	2-11/16	68	1-5/8	41	400	50
3/4	19	3/8	10	3-1/4	83	2-3/4	70	1-3/8	35	400	50
1	25	3/8	10	3-3/8	87	3	76	1-9/32	33	400	50
1-1/4	32	3/8	10	3-3/4	95	3-1/8	79	1-15/32	37	400	50
1-1/2	38	3/8	10	4	102	3-1/8	79	1-15/32	37	400	50
2	50	3/8	10	4-1/4	108	3-1/2	89	1-3/16	30	400	50
2-1/2	64	1/2	13	6-11/16	119	4-1/4	108	1-3/16	30	600	25
3	76	1/2	13	5-1/2	140	4-3/8	111	1-1/2	38	600	25
4	102	1/2	13	6-7/16	164	4-13/16	122	1-15/16	37	1,000	25



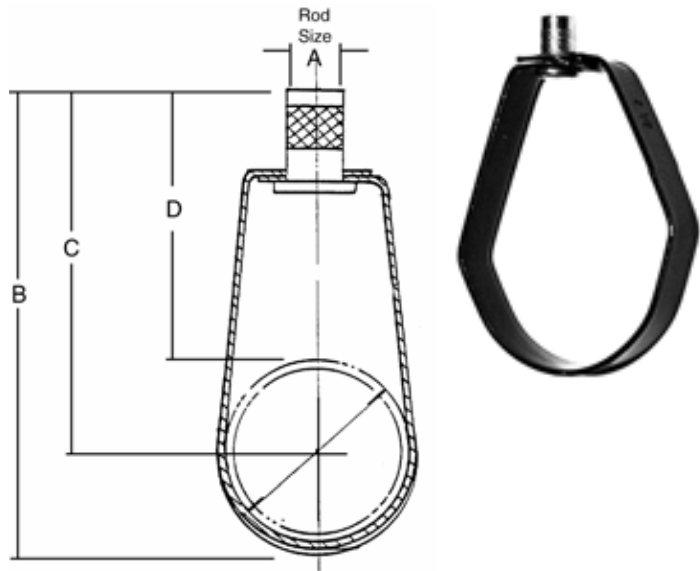
## STANDARD & COMMERCIAL PIPE HANGERS

### A 275E Epoxy Coated Swivel Ring Hanger

Material : Epoxy Coated Carbon Steel

Application: Designed for supporting non – insulated copper and steel pipe lines. Epoxy coated finish hanger can be used in place of figure # A 250 C copper coated hanger.

Ordering : Specify figure number and pipe size.



### A 275E EPOXY COATED SWIVEL RING HANGER

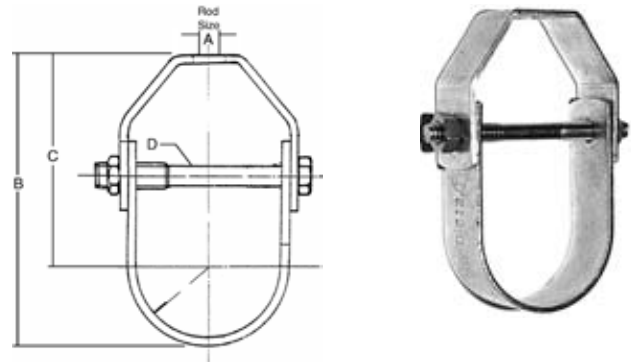
SIZE		"A"		"B"		"C"		"D"		Max Rec Load	Box Qty
	mm		mm		mm		mm		mm		
1/2	13	3/8	10	3-1/8	79	2-11/16	68	1-5/8	41	400	50
3/4	19	3/8	10	3-1/4	83	23/4	70	1-3/8	35	400	50
1	25	3/8	10	3-3/8	87	3	76	1-9/32	33	400	50
1-1/4	32	3/8	10	3-3/4	95	3-1/8	79	1-15/32	37	400	50
1-1/2	38	3/8	10	4	102	3-1/8	79	1-15/32	37	400	50
2	50	3/8	10	4-1/4	108	3-1/2	89	1-3/16	30	400	50
2(IP)	3/8	10	4-1/4	122	3-1/2	91	1-3/16	30	400	50	50
2-1/2	64	3/8	10	6-11/16	119	4-1/4	108	1-3/16	30	600	25
2-1/2(IP)	1/2	13	6-11/16	154	4-5/8	115	1-3/16	30	600	50	25
3	76	1/2	13	5-1/2	140	4-3/8	111	1-1/2	38	600	25
3(IP)	89	1/2	13	5-1/2	162	4-5/8	116	1-1/2	38	600	25
4	102	1/2	13	6-7/16	164	4-13/16	122	1-15/32	37	1,000	25
4(IP)	127	1/2	13	6-7/16	186	5	127	1-15/32	37	1,000	25



## STANDARD & COMMERCIAL PIPE HANGERS

### A 210 Light Duty Clevis Hanger

Material :	Carbon Steel - Zinc Plated
Application :	Designed for suspending stationary pipe lines. Design of hanger allows for vertical adjustment.
Ordering :	Specify pipe size and figure number. This hanger is only available in sizes 1/2" thru 6" and is designed for light loads only. For heavier loads refer to figure # A 235 clevis hanger.



### A 210 LIGHT DUTY CLEVIS

SIZE		"A"		"B"		"C"		"D"		Lower Material		Upper Material		Max Rec Load	Box Qty
	mm		mm		mm		mm		mm		mm		mm		
1/2	13	3/8	10	2-13/16	71	2-5/16	59	1/4	6	3/32x7/8	2.1x22	3/32x7/8	2.1x22	250	50
3/4	19	3/8	10	3	76	2-13/32	61	1/4	6	3/32x7/8	2.1x22	3/32x7/8	2.1x22	250	50
1	25	3/8	10	3-5/16	84	2-19/32	66	1/4	6	3/32x7/8	2.1x22	3/32x7/8	2.1x22	250	50
1-1/4	32	3/8	10	3-11/16	93	2-11/16	68	1/4	6	3/32x7/8	2.1x22	3/32x7/8	2.1x22	250	50
1-1/2	38	3/8	10	4	101	2-13/16	71	1/4	6	3/32x7/8	2.1x22	3/32x7/8	2.1x22	250	50
2	50	1/2	13	4-7/16	112	3-9/16	80	1/4	6	3/32x7/8	2.1x22	3/32x7/8	2.1x22	250	50
2-1/2	64	1/2	13	5-3/8	136	4	100	3/8	13	1/8x1-3/16	3x30	1/8x1-3/16	3x30	350	25
3	76	1/2	13	6	152	4-3/16	107	3/8	13	1/8x1-3/16	3x30	1/8x1-3/16	3x30	350	25
3-1/2	89	1/2	13	6-5/8	168	4-5/8	117	3/8	13	1/8x1-3/16	3x30	1/8x1-3/16	3x30	350	25
4	102	1/2	13	7-1/2	190	5-3/16	132	3/8	13	1/8x1-3/16	3x30	3/16x1-3/16	4.5x40	400	25





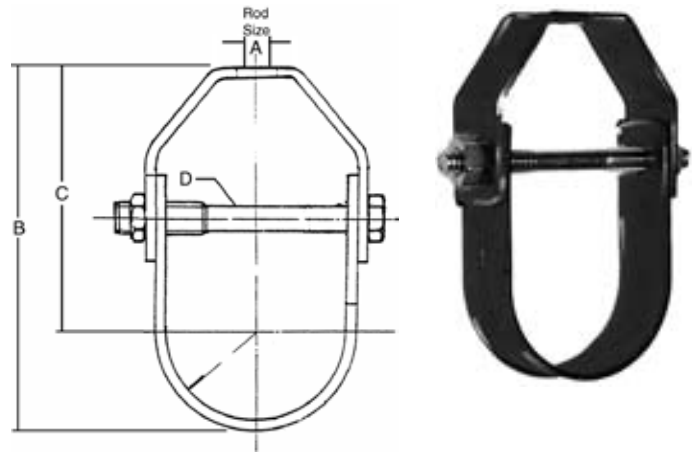
## STANDARD & COMMERCIAL PIPE HANGERS

### A 280E Light Duty Epoxy Coated Clevis Hanger

Material : Epoxy Coated Carbon Steel

Application : Designed for suspending light stationary pipe allowing for vertical adjustment. Epoxy coating is for preventing contact between tubing and the hanger. Can also be used for steel pipe

Ordering : Specify figure number and pipe size.  
Only available in sizes 1/2" thru 4"



### A 280E LIGHT DUTY CLEVIS EPOXY

SIZE		A		B		C		D		Upper Material		Lower Material		Box Qty
			mm		mm		mm		mm		mm		mm	
1/2CP	3/8IP	3/8	10	2-13/16	71	1-3/16	30	1/4	6	3/32x7/8	2x22	3/32x7/8	2x22	50
3/4CP	1/2IP	3/8	10	3	76	1-7/8	48	1/4	6	3/32x7/8	2x22	3/32x7/8	2x22	50
1CP	3/4IP	3/8	10	3-5/16	84	2-1/4	52	1/4	6	3/32x7/8	2x22	3/32x7/8	2x22	50
1-1/4CP	1IP	3/8	10	3-11/16	93	2-1/4	57	1/4	6	3/32x7/8	2x22	3/32x7/8	2x22	50
1-1/2CP	1-1/4IP	3/8	10	4	101	2-3/8	60	1/4	6	3/32x7/8	2x22	3/32x7/8	2x22	50
2CP	1-1/2IP	1/2	13	4-7/16	112	2-3/4	70	1/4	6	3/32x7/8	2x22	3/32x7/8	2x22	50
2IP	-	1/2	13	4-7/16	112	2-3/4	70	1/4	6	3/32x7/8	2x22	3/32x7/8	2x22	50
2-1/2CP	-	1/2	13	5-3/8	136	3-1/4	82	3/8	10	1/8x1-3/16	3x30	1/8x1-3/16	3x30	25
2-1/2IP	-	1/2	13	5-3/8	136	3-1/4	82	3/8	10	1/8x1-3/16	3x30	1/8x1-3/16	3x30	25
3CP	-	1/2	13	6	152	3-1/2	89	3/8	10	1/8x1-3/16	3x30	1/8x1-3/16	3x30	25
3IP	-	1/2	13	6	152	3-1/2	89	3/8	10	1/8x1-3/16	3x30	1/8x1-3/16	3x30	25
4CP	-	5/8	13	7-1/2	190	4-1/4	108	3/8	10	3/16x1-3/16	4.5x30	1/8x1-3/16	3x30	25
4IP	-	5/8	13	7-1/2	190	4-1/4	108	3/8	10	3/16x1-3/16	4.5x30	1/8x1-3/16	3x30	25



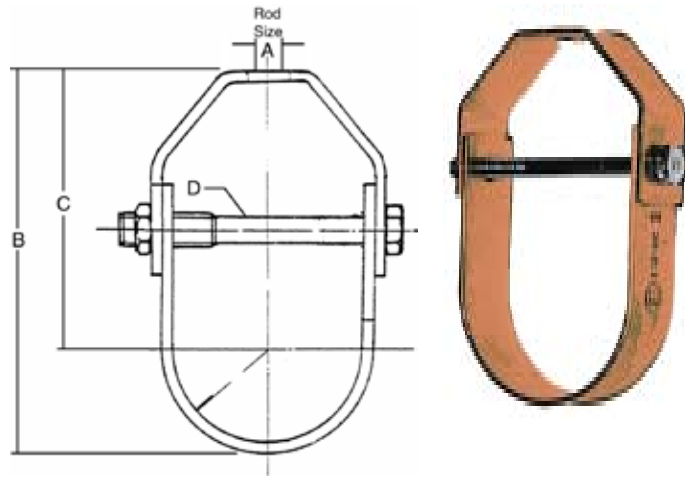
## STANDARD & COMMERCIAL PIPE HANGERS

### A 310 C Light Duty Copper Clevis Hanger

Material : Copper Electroplated Carbon Steel.

Application : Designed for suspending copper tubing lines. Design of hanger allows for vertical adjustment.

Ordering : Specify figure number and pipe size.



### A 310C LIGHT DUTY CLEVIS COPPER PLATED

SIZE	"A"		"B"		"C"		"D"		Upper Material		Lower Material		Box Qty	
	mm	mm	mm	mm	mm	mm	mm	mm	mm	mm	mm			
1/2	13	3/8	10	2-13/16	61	2-5/16	52	1/4	6	3/32x7/8	2x22	3/32x7/8	2x22	50
3/4	19	3/8	10	3	71	2-13/32	59	1/4	6	3/32x7/8	2x22	3/32x7/8	2x22	50
1	25	3/8	10	3-5/16	76	2-19/32	60	1/4	6	3/32x7/8	2x22	3/32x7/8	2x22	50
1-1/4	32	3/8	10	3-11/16	84	2-11/16	65	1/4	6	3/32x7/8	2x22	3/32x7/8	2x22	50
1-1/2	38	3/8	10	4	93	2-13/16	71	1/4	6	3/32x7/8	2x22	3/32x7/8	2x22	50
2	50	1/2	13	4-7/16	107	3-9/16	78	1/4	6	3/32x7/8	2x22	3/32x7/8	2x22	50
2-1/2	64	1/2	13	5-3/8	134	4	98	3/8	13	1/8x1-3/16	3x30	1/8x1-3/16	3x30	25
3	76	1/2	13	6	143	4-3/16	101	3/8	13	1/8x1-3/16	3x30	1/8x1-3/16	3x30	25
3-1/2	89	1/2	13	6-5/8	162	4-5/8	112	3/8	13	1/8x1-3/16	3x30	1/8x1-3/16	3x30	25
4	102	5/8	16	7-1/2	173	5-3/16	118	3/8	13	1/8x1-3/16	3x30	3/16x1-3/16	4.5x30	25



## STANDARD & COMMERCIAL PIPE HANGERS

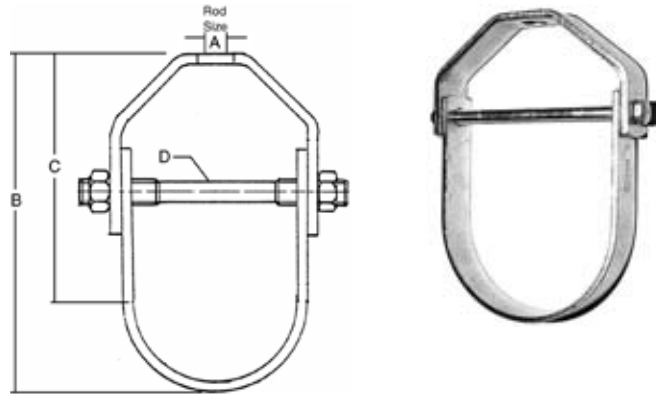
### A 235 Standard Clevis Hanger

**Material :** Zinc Plated carbon steel. Also available in Stainless Steel and Bare Metal.

**Application :** Designed for suspending non – insulated stationary pipe, allowing for vertical adjustment.

**Ordering :** Specify pipe size and figure number.

**Approvals :** Complies with Manufacturers Standardization Society SP – 69 Type 1



Listed and approved in 1" thru 8" only

### A 235 STANDARD CLEVIS HANGER

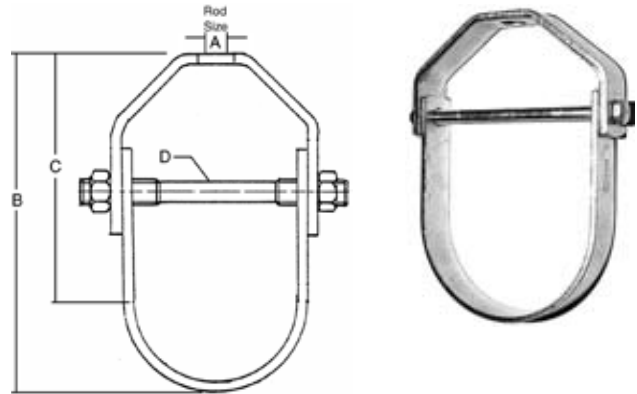
SIZE	"A"		"B"		"C"		"D"		Lower Material		Upper Material		Max Rec Load	Box Qty	
	mm	mm	mm	mm	mm	mm	mm	mm	mm	mm					
1/2	13	3/8	10	2-3/8	73	2-13/32	61	1/4	6	1/8x1	3x25	1/8x1	3x25	300	50
3/4	19	3/8	10	3-5/32	80	2-9/16	65	1/4	6	1/8x1	3x25	1/8x1	3x25	300	50
1	25	3/8	10	3-3/8	86	2-21/32	68	1/4	6	1/8x1	3x25	1/8x1	3x25	300	50
1-1/4	32	3/8	10	3-3/4	95	2--3/4	70	1/4	6	1/8x1	3x25	1/8x1	3x25	610	50
1-1/2	38	3/8	10	4-1/16	103	2-7/8	73	1/4	6	1/8x1	3x25	1/8x1	3x25	610	50
2	50	3/8	10	4-1/2	114	3-1/4	82	1/4	6	1/8x1	3x25	1/8x1	3x25	610	50
2-1/2	64	1/2	13	5-1/2	140	4-1/16	103	3/8	10	3/16x1-3/16	4.5x30	3/16x1-3/16	4.5x30	1,130	25
3	76	1/2	13	6-1/8	155	4-5/16	110	3/8	10	3/16x1-3/16	4.5x30	3/16x1-3/16	4.5x30	1,350	25
3-1/2	89	1/2	13	6-3/4	171	4-3/4	120	3/8	10	3/16x1-3/16	4.5x30	3/16x1-3/16	4.5x30	1,350	25
4	102	5/8	16	7-5/8	193	5-5/16	135	3/8	10	3/16x1-3/16	4.5x30	1/4x1-3/16	6x30	1,430	25
5	127	5/8	16	8-7/8	225	6-1/16	154	1/2	13	3/16x1-3/16	4.5x30	1/4x1-3/16	6x30	1,430	1
6	152	3/4	19	10	254	6-5/8	169	1/2	13	3/16x1-1/2	4.5x38	1/4x1-1/2	6x38	1,940	1
8	203	3/4	19	12-3/4	324	8-3/8	213	5/8	16	3/16x1-1/2	4.5x38	1/4x1-1/2	6x38	2,000	1
10	254	7/8	22	16-5/8	423	11-11/16	297	3/4	19	1/4x2	6x50	5/16x2	8x50	3,600	1
12	305	7/8	22	18-11/16	475	12-1/4	312	3/4	19	1/4x2	6x50	5/16x2	8x50	3,800	1
14	356	1	25	20-5/16	516	13-15/16	354	7/8	22	1/4x2	6x50	15/32x2	12x50	4,200	1
16	406	1	25	22-1/16	560	14	355	1	25	1/4x2-1/2	6x63	15/32x2-1/2	12x63	4,600	1
18	457	1	25	24-3/4	628	15-11/16	398	1-1/8	28	1/4x2-1/2	6x63	15/32x2-1/2	12x63	4,800	1
20	508	1-1/4	32	27-3/8	695	17-5/16	440	1-1/4	32	5/16x3	8x76	5/8x3	16x76	4,800	1
24	610	1-1/4	32	31-5/8	803	19-9/16	497	1-1/4	32	5/16x3	8x76	5/8x3	16x76	4,800	1



## STANDARD & COMMERCIAL PIPE HANGERS

### A 235 SS Stainless Steel Standard Clevis Hanger

- Material :** 316 Stainless steel.
- Application :** Designed for suspending non – insulated stationary stainless steel pipe, allowing for vertical adjustment.
- Ordering :** Specify pipe size and figure number.
- Approvals :** Complies with Manufacturers Standardization Society SP – 69 Type 1



### A 235SS STANDARD CLEVIS HANGER

SIZE	"A"		"B"		"C"		"D"		Lower Material		Upper Material		Max Rec Load		
	mm		mm		mm		mm		mm		mm				
1/2	13	3/8	10	2-3/8	73	2-13/32	61	1/4	6	1/8x1	3x25	1/8x1	3x25	300	50
3/4	19	3/8	10	3-5/32	80	2-9/16	65	1/4	6	1/8x1	3x25	1/8x1	3x25	300	50
1	25	3/8	10	3-3/8	86	2-21/32	68	1/4	6	1/8x1	3x25	1/8x1	3x25	300	50
1-1/4	32	3/8	10	3-3/4	95	2--3/4	70	1/4	6	1/8x1	3x25	1/8x1	3x25	610	50
1-1/2	38	3/8	10	4-1/16	103	2-7/8	73	1/4	6	1/8x1	3x25	1/8x1	3x25	610	50
2	50	3/8	10	4-1/2	114	3-1/4	82	1/4	6	1/8x1	3x25	1/8x1	3x25	610	50
2-1/2	64	1/2	13	5-1/2	140	4-1/16	103	3/8	10	3/16x1-3/16	4.5x30	3/16x1-3/16	4.5x30	1,130	25
3	76	1/2	13	6-1/8	155	4-5/16	110	3/8	10	3/16x1-3/16	4.5x30	3/16x1-3/16	4.5x30	1,350	25
3-1/2	89	1/2	13	6-3/4	171	4-3/4	120	3/8	10	3/16x1-3/16	4.5x30	3/16x1-3/16	4.5x30	1,350	25
4	102	5/8	16	7-5/8	193	5-5/16	135	3/8	10	3/16x1-3/16	4.5x30	1/4x1-3/16	6x30	1,430	25
5	127	5/8	16	8-7/8	225	6-1/16	154	1/2	13	3/16x1-3/16	4.5x30	1/4x1-3/16	6x30	1,430	1
6	152	3/4	19	10	254	6-5/8	169	1/2	13	3/16x1-1/2	4.5x38	1/4x1-1/2	6x38	1,940	1
8	203	3/4	19	12-3/4	324	8-3/8	213	5/8	16	3/16x1-1/2	4.5x38	1/4x1-1/2	6x38	2,000	1
10	254	7/8	22	16-5/8	423	11-11/16	297	3/4	19	1/4x2	6x50	5/16x2	8x50	3,600	1
12	305	7/8	22	18-11/16	475	12-1/4	312	3/4	19	1/4x2	6x50	5/16x2	8x50	3,800	1
14	356	1	25	20-5/16	516	13-15/16	354	7/8	22	1/4x2	6x50	15/32x2	12x50	4,200	1
16	406	1	25	22-1/16	560	14	355	1	25	1/4x2-1/2	6x63	15/32x2-1/2	12x63	4,600	1
18	457	1	25	24-3/4	628	15-11/16	398	1-1/8	28	1/4x2-1/2	6x63	15/32x2-1/2	12x63	4,800	1
20	508	1-1/4	32	27-3/8	695	17-5/16	440	1-1/4	32	5/16x3	8x76	5/8x3	16x76	4,800	1
24	610	1-1/4	32	31-5/8	803	19-9/16	497	1-1/4	32	5/16x3	8x76	5/8x3	16x76	4,800	1



## STANDARD & COMMERCIAL PIPE HANGERS

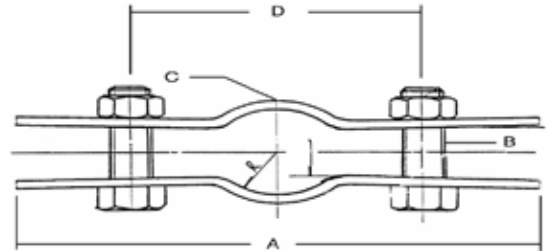
### A 150 Standard Riser Clamp

**Material :** Zinc Plated Carbon Steel Also available hot / dipped galvanized and bare metal.

**Application:** Designed for supporting and stabilizing vertical pipe runs.

**Ordering:** Specify pipe size, and figure number.

**Approvals:** Complies with Manufacturers Standardization Society SP – 69 Type 8.



### A 150 STANDARD RISER CLAMP

SIZE	"A"		"B"		"C"		"D"		Max Rec Load	Box Qty	
	mm	mm	mm	mm	mm	mm	mm	mm			
1/2	13	8-1/2	216	3/8	10	1/8x1	3x25	2-3/8	59	220	25
3/4	19	8-15/16	227	3/8	10	1/8x1	3x25	2-11/16	68	255	25
1	25	8-15/16	227	3/8	10	1/8x1	3x25	2-13/16	71	255	25
1-1/4	32	9-7/16	240	3/8	10	1/8x1	3x25	3-5/16	83	255	25
1-1/2	38	9-7/8	251	3/8	10	1/8x1	3x25	3-3/4	95	255	20
2	50	10-1/4	260	3/8	10	5/32x1-1/4	4x30	4-3/16	106	300	30
2-1/2	64	11	280	3/8	10	5/32x1-1/4	4x30	4-7/8	124	400	25
3	76	11-3/4	298	3/8	10	3/16x1-1/4	4.5x30	5-1/2	140	500	25
3-1/2	89	12-5/8	321	1/2	13	3/16x1-1/4	4.5x30	6-5/8	168	600	15
4	102	13	330	1/2	13	1/4x1-1/4	6x30	8-1/4	168	750	15
5	127	14-1/2	368	1/2	13	1/4x1-1/4	6x30	9-5/8	210	1,500	15
6	152	16	406	1/2	13	1/4x2	5.5x50	12-1/4	244	1,600	1
8	203	18-1/4	464	5/8	16	3/8x2	10x50	14-5/8	311	2,500	1
10	254	20-5/8	524	5/8	16	3/8x2	10x50	17-1/8	371	2,500	1
12	305	23	584	5/8	16	1/2x2	13x50	18-1/4	435	2,700	1
14	356	24-1/2	622	5/8	16	1/2x2	13x50	21	464	2,700	1
16	406	27	686	3/4	19	5/8x2-1/2	16x64	23	533	3,700	1
18	457	29	737	3/4	19	5/8x2-1/2	16x64	23	584	3,700	1
20	508	31-5/8	803	3/4	19	5/8x3	16x76	25-5/8	651	2,900	1



## STANDARD & COMMERCIAL PIPE HANGERS

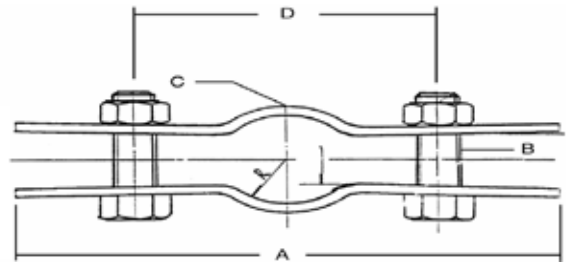
### A 325 C Copper Plated Riser Clamp

Material : Copper Electroplated Carbon Steel.

Application : Designed to support and stabilize vertical runs of copper tubing.

Ordering : Specify figure number and copper tubing size.

Approvals : Complies with Manufacturers Standardization Society SP – 69 Type 8.



### A 325 C COPPER PLATED RISER CLAMP

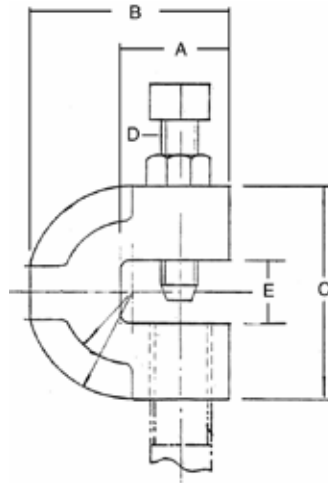
SIZE	"A"		"B"		"C"		"D"		Max Rec Load	Box Qty	
	mm	mm	mm	mm	mm	mm	mm	mm			
1/2	13	8-1/2	216	5/16	8	1/8"x1	3x25	2-1/2	64	220	25
3/4	19	9-1/4	235	5/16	8	1/8"x1	3x25	2-3/4	70	220	25
1	25	9-1/4	235	5/16	8	1/8"x1	3x25	3-1/4	83	255	25
1-1/4	32	9-1/2	241	5/16	8	5/32x1-1/4	4x30	3-1/2	89	255	25
1-1/2	38	9-1/2	241	3/8	10	5/32x1-1/4	4x30	3-5/8	92	255	30
2	50	10-1/4	260	3/8	10	5/32x1-1/4	4x30	4-3/8	111	300	30
2-1/2	64	11	280	3/8	10	5/32x1-1/4	4x30	5-3/8	137	400	25
3	76	12	305	3/8	10	5/32x1-1/4	4x30	6	152	500	25
4	102	12-1/2	318	3/8	10	5/32x1-1/4	4x30	6-1/2	165	750	15



## STANDARD & COMMERCIAL PIPE HANGERS

### A 410 C-Clamp

- Material : Malleable Iron.
- Application: Designed for attachment to standard I-Beams where the beam thickness does not exceed 5/8".
- Ordering: Specify pipe size, and figure number.
- Approvals: Complies with Manufacturers Standardization Society SP – 69 Type 19.



### A410 C-CLAMP

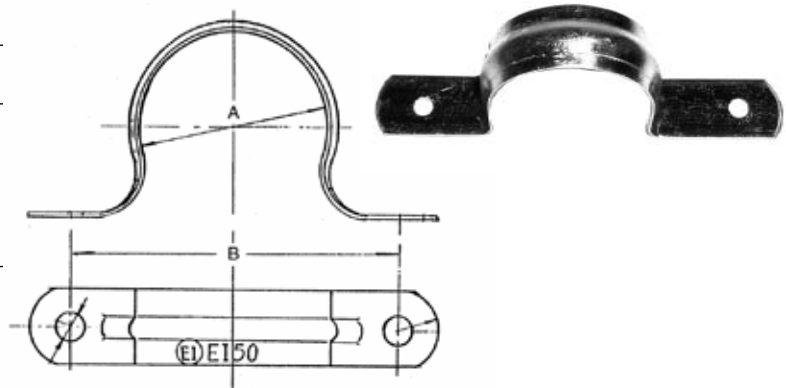
SIZE	A		B		C		D		E		Max Rec Load	Box Qty	
	mm	mm	mm	mm	mm	mm	mm	mm	mm				
3/8	10	15/16	24	1-3/4	45	1-3/4	45	3/8	10	13/16	20	350	50
1/2	13	15/16	24	1-3/4	45	1-3/4	45	3/8	10	13/16	20	500	50



## STANDARD & COMMERCIAL PIPE HANGERS

### A 50 Zinc Plated 2- Hole Pipe Strap

- Material : Zinc Plated Carbon Steel
- Application : Designed to support steel pipe on walls or on a roof where pipe needs to be securely fastened.
- Ordering : Specify figure number and pipe size.



### A 50 2-HOLE PIPE STRAP

SIZE	A		B		Box Qty
	mm	mm	mm	mm	
3/8	10	17	41	1-5/8	200
1/2	13	21	44	1-3/4	200
3/4	19	27	48	1-7/8	200
1	25	33	60	2-3/8	200
1-1/4	32	42	73	2-7/8	100
1-1/2	38	48	83	3-1/4	100
2	50	60	108	4-1/4	50
2-1/2	64	73	124	4-7/8	50
3	76	89	143	5-5/8	40
4	102	114	176	6-15/16	40

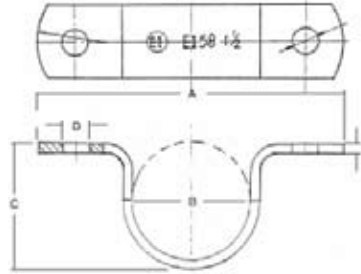




## STANDARD & COMMERCIAL PIPE HANGERS

### A 58 Heavy Duty Black Short Strap

Material :	Carbon Steel
Application:	Designed for supporting pipe runs between walls, ceilings, and on a roof.
Ordering:	Specify pipe size, and figure number.
Approvals:	Complies with Manufacturers Standardization Society SP – 69 Type 26.



### A 58 HEAVY DUTY BLACK SHORT STRAP

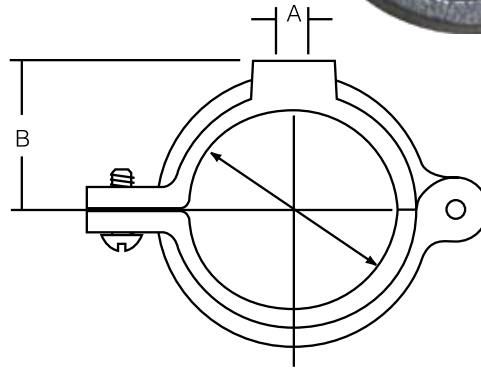
SIZE	A		B		C		D		E		Max Rec load	Box Qty	
	mm	mm	mm	mm	mm	mm	mm	mm	mm				
1/2	13	2-7/16	62	7/8	22	7/8	20	5/16	8	1/8x1	3x25	300	100
3/4	19	2-7/8	73	1-7/64	28	1	25	5/16	8	1/8x1	3x25	300	100
1	25	2-7/8	73	1-3/8	35	1-1/4	32	5/16	8	1/8x1	3x25	300	100
1-1/4	32	3-9/16	90	1-3/4	44	1-5/8	41	5/16	8	1/8x1	3x25	300	100
1-1/2	38	3-15/16	100	2	50	1-7/8	47	7/16	11	9/64x1-1/4	3.5x32	300	100
2	50	4-7/16	113	2-7/16	62	2-1/4	57	7/16	11	9/64x1-1/4	3.5x32	300	100
2-1/2	64	5-13/16	148	2-15/16	75	2-11/16	69	7/16	11	3/16x1-1/2	4.5x38	400	50
3	76	6	152	3-9/16	91	3-5/16	84	7/16	11	3/16x1-1/2	4.5x38	400	50
4	102	8	203	4-9/16	116	4-5/16	110	9/16	14	1/4x1-1/2	6x38	400	20
5	127	8-5/8	219	5-11/16	144	5-3/8	136	9/16	14	1/4x1-1/2	6x38	400	1
6	152	9-5/8	245	6-3/4	171	6-3/8	162	9/16	14	1/4x1-1/2	6x38	500	1
8	203	12-5/8	320	8-3/4	222	8-1/2	216	11/16	17	3/8x1-1/2	10x38	500	1
10	254	14-1/8	359	10-7/8	276	10-5/8	270	13/16	21	3/8x2	10x50	600	1
12	305	16-3/8	416	12-7/8	327	12-5/8	321	13/16	21	15/32x2	12x50	600	1



## STANDARD & COMMERCIAL PIPE HANGERS

### A 131 Split Ring Hanger - Hinged

Material :	Zinc Plated Malleable Iron.
Application:	Designed for suspending non-insulated pipe horizontally.
Ordering:	Specify pipe size, and figure number.
Approvals:	Complies with Manufacturers Standardization Society SP – 69 Type 12.



### A 131 SPLIT RING HANGER

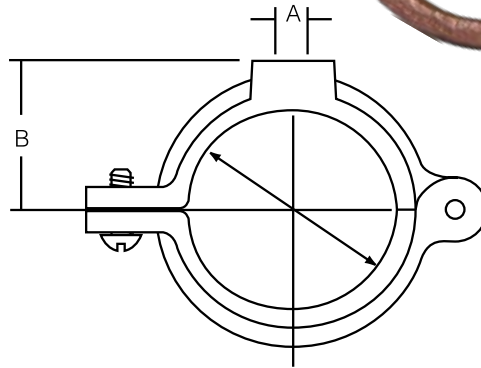
SIZE		A		B		Max Rec load	Box Qty
	mm		mm		mm		
1/2	13	3/8	10	7/8	22	180	100
3/4	19	3/8	10	1	25	180	50
1	25	3/8	10	1-7/64	28	180	50
1-1/4	32	3/8	10	1-5/16	33	180	50
1-1/2	38	3/8	10	1-17/32	39	180	50
2	50	3/8	10	1-11/16	43	180	50
2-1/2	64	1/2	13	2-1/8	54	300	25
3	76	1/2	13	2-7/16	62	300	25
4	102	1/2	13	3	75	300	20



## STANDARD & COMMERCIAL PIPE HANGERS

### A 131C Copper Plated Split Ring Hanger - Hinged

Material :	Copper Plated Malleable Iron.
Application:	Designed for suspending non-insulated pipe horizontally.
Ordering:	Specify pipe size, and figure number.
Approvals:	Complies with Manufacturers Standardization Society SP – 69 Type 12.



### A 131C COPPER PLATED SPLIT RING HANGER - HINGED

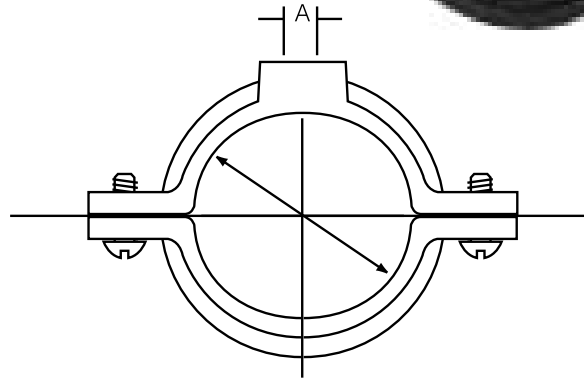
SIZE		A		B		Max Rec load	Box Qty
	mm		mm		mm		
1/2	13	3/8	10	7/8	22	180	100
3/4	19	3/8	10	1	25	180	50
1	25	3/8	10	1-7/64	28	180	50
1-1/4	32	3/8	10	1-5/16	33	180	50
1-1/2	38	3/8	10	1-17/32	39	180	50
2	50	3/8	10	1-11/16	43	180	50
2-1/2	64	1/2	13	2-1/8	54	300	25
3	76	1/2	13	2-7/16	62	300	25
4	102	1/2	13	3	75	300	20



## STANDARD & COMMERCIAL PIPE HANGERS

### A 131R Split Ring Hanger - Hinged Rubber Lined

Material :	Copper Plated Steel.
Application:	Prevents vibration, noise and metal to metal contact.
Ordering:	Specify pipe size, and figure number.
Approvals:	Complies with Manufacturers Standardization Society SP – 69 Type 12.



### A 131R SPLIT RING HANGER - HINGED RUBBER LINED

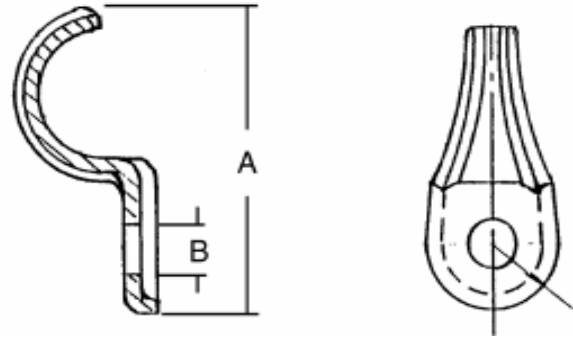
COPPER SIZE		SPI SREC		A		Max Rec load lbs.	Box Qty
	mm		mm		mm		
3/8	10			3/8	10	47	50
1/2		3/8	10	3/8	10	47	50
3/4		1/2		3/8	10	47	50
1		3/4		3/8	10	47	50
1-1/4		1		3/8	10	47	50
1-1/2		1-1/4		3/8	10	67	50
		1-1/2		3/8	10	67	50
2				3/8	10	67	50
		2		3/8	10	67	50
2-1/2				3/8	10	210	50
3		2-1/2		3/8	10	210	50
		3		3/8	10	210	25
		4		3/8	10	210	25
4				3/8	10	210	25



## STANDARD & COMMERCIAL PIPE HANGERS

### A132 One Hole Clamp

- Material : Zinc Plated Malleable Iron.
- Application: Designed for supporting light duty pipe against wood or concrete walls.
- Ordering: Specify pipe size, and figure number.



### A 132 ONE HOLE CLAMP

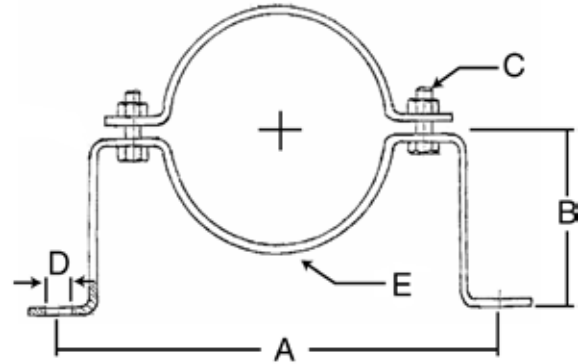
SIZE		A		B		Box Qty
	mm		mm		mm	
3/8	9	7/8	22	1/4	6	100
1/2	13	1	25	1/4	6	100
3/4	19	1-3/16	30	5/16	8	100
1	25	1-3/8	35	3/8	10	100
1-1/4	32	1-9/16	40	3/8	10	100
1-1/2	38	1-13/16	46	1/2	13	100
2	50	2-1/8	54	1/2	13	50



## STANDARD & COMMERCIAL PIPE HANGERS

### A 500 Offset Pipe Clamp

Material:	Carbon Steel
Finish:	Bare metal standard. Zinc plated and hot dipped galvanized are also available.
Service:	These clamps are designed for supporting vertical or horizontal pipe runs at a fixed distance from a wall or structure.
Ordering:	Specify part number, and pipe size.



### A500 OFFSET PIPE CLAMP

Size	A		B		C		D		E		Max Rec Load	Box Qty	
	mm	mm	mm	mm	mm	mm	mm	mm	mm				
1/2	13	6	152	2-1/2	64	3/8	10	7/16	11	13/16x1-1/4	5x32	200	1
3/4	19	7-5/16	189	2-1/2	64	3/8	10	7/16	11	13/16x1-1/4	5x32	200	1
1	25	7-9/16	192	2-5/8	67	3/8	10	7/16	11	13/16x1-1/4	5x32	200	1
1-1/4	32	7-7/8	200	2-13/16	71	3/8	10	7/16	11	13/16x1-1/4	5x32	200	1
1-1/2	38	8-1/4	210	3	75	3/8	10	7/16	11	13/16x1-1/4	5x32	200	1
2	50	9-1/8	232	3-3/16	81	1/2	13	9/16	14	1/4x1-1/4	6x32	410	1
2-1/2	64	10-1/2	267	3-7/16	87	1/2	13	9/16	14	1/4x1-1/4	6x32	410	1
3	76	11-1/8	283	3-3/4	95	1/2	13	9/16	14	1/4x1-1/4	6x32	410	1
4	102	12-1/2	318	4-1/4	108	1/2	13	9/16	14	1/4x1-1/2	6x38	600	1
5	127	13-3/4	349	4-3/4	121	5/8	16	11/16	17.5	1/4x2	6x50	600	1
6	152	16-1/2	419	5-5/16	135	5/8	16	11/16	17.5	3/8x2	10x50	850	1
8	203	18-5/8	473	6-5/16	160	5/8	16	11/16	17.5	3/8x2	10x50	850	1
10	254	23	584	7-3/4	197	3/4	19	13/16	21	3/8x3	10x76	870	1
12	305	25	635	8-3/4	222	3/4	19	13/16	21	3/8x3	10x76	870	1





## **FIRE PROTECTION & WATERWORKS HANGERS**

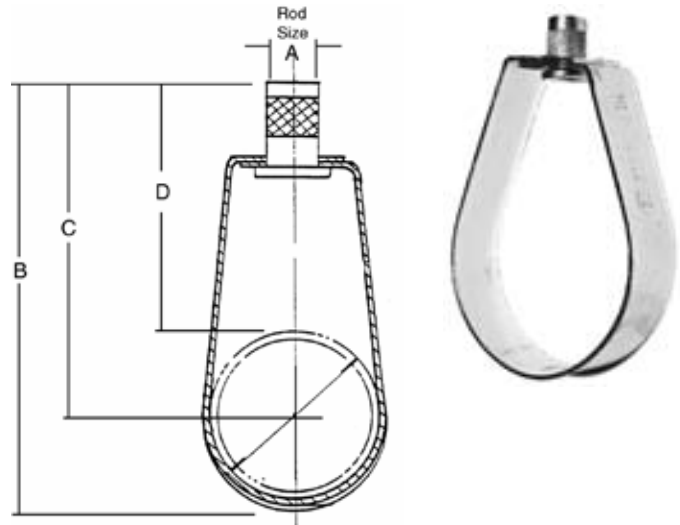
Hangers offered in this section are designed to support fire sprinkler pipe, and ductile iron pipe.

<b>Material:</b>	Carbon steel, malleable iron and 316 stainless steel are used in manufacturing these hangers. Other materials are also available on request.
<b>Finishes:</b>	There is an assortment of finishes used in the fire protection product line, Standard hangers are made from pregalvanized material . Waterworks clamps are furnished bare metal.
<b>Approvals:</b>	Some items in this section are Underwriters Laboratory listed and Factory Mutual Approved. All other items comply with Manufacturers Standardization Society MSS Sp-69.

## FIRE PROTECTION & WATERWORKS HANGERS

### A 100 Adjustable Swivel Ring Hanger

Material:	Pre Galvanized Carbon Steel
Application:	Used for all general purpose and fire protection lines. The knurled nut allows for hanger alignment and adjustment after installation.
Approvals:	Underwriters Laboratory Listed, Factory Mutual Approved. Complies with Manufacturers Standardization Society.
Ordering:	Specify figure number and pipe size.



### A 100 ADJUSTABLE SWIVEL RING HANGER

SIZE	"A"		"B"		"C"		"D"		Max Rec Load	Box Qty	
	mm		mm		mm		mm				
1/2	13	3/8	10	2-11/16	69	2-3/16	55	7/8	23	300	100
3/4	19	3/8	10	2-15/16	74	2-13/32	60	1-3/16	28	300	100
1	25	3/8	10	3-1/8	79	2-1/2	65	1-3/8	35	300	100
1-1/4	32	3/8	10	3-1/2	89	3	75	1-3/4	44	300	100
1-1/2	38	3/8	10	3-3/4	94	3-1/8	80	2	50	300	100
2	50	3/8	10	4-3/32	104	3-1/2	90	2-7/16	62	300	100
2-1/2	64	3/8	10	5-5/6	134	4-3/4	120	3	75	525	50
3	76	3/8	10	5-11/16	144	5-1/8	130	3-1/2	91	525	50
4	102	3/8	10	6-7/8	174	6-5/16	160	4-5/8	116	650	25
5	127	1/2	13	9-1/8	231	8-15/32	215	5-11/16	143	1,000	20
6	152	1/2	13	10-1/4	261	9-15/32	240	6-5/8	170	1,000	15
8	203	1/2	13	12-1/2	316	11-3/4	300	8-11/16	221	1,000	10





## FIRE PROTECTION & WATERWORKS HANGERS

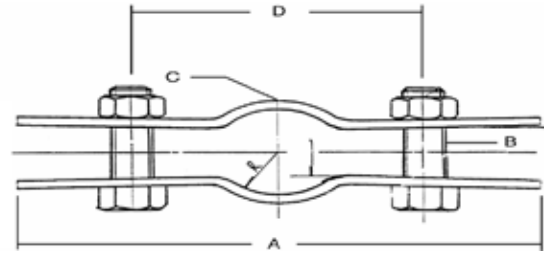
### A 150 Standard Riser Clamp

**Material:** Zinc Plated Carbon Steel Also available hot / dipped galvanized and bare metal.

**Application:** Designed for supporting and stabilizing vertical pipe runs.

**Ordering:** Specify pipe size, and figure number.

**Approvals:** Complies with Manufacturers Standardization Society SP – 69 Type 8.



### A 150 STANDARD RISER CLAMP

SIZE	"A"		"B"		"C"		"D"		Max Rec Load	Box Qty	
	mm	mm	mm	mm	mm	mm	mm				
1/2	13	8-1/2	216	3/8	10	1/8x1	3x25	2-3/8	59	220	25
3/4	19	8-15/16	227	3/8	10	1/8x1	3x25	2-11/16	68	255	25
1	25	8-15/16	227	3/8	10	1/8x1	3x25	2-13/16	71	255	25
1-1/4	32	9-7/16	240	3/8	10	1/8x1	3x25	3-5/16	83	255	25
1-1/2	38	9-7/8	251	3/8	10	1/8x1	3x25	3-3/4	95	255	25
2	50	10-1/4	260	3/8	10	5/32x1-1/4	4x30	4-3/16	106	300	25
2-1/2	64	11	280	3/8	10	5/32x1-1/4	4x30	4-7/8	124	400	25
3	76	11-3/4	298	3/8	10	3/16x1-1/4	4.5x30	5-1/2	140	500	25
3-1/2	89	12-5/8	321	1/2	13	3/16x1-1/4	4.5x30	6-5/8	168	600	15
4	102	13	330	1/2	13	1/4x1-1/4	6x30	8-1/4	168	750	15
5	127	14-1/2	368	1/2	13	1/4x1-1/4	6x30	9-5/8	210	1,500	15
6	152	16	406	1/2	13	1/4x2	5.5x50	12-1/4	244	1,600	1
8	203	18-1/4	464	5/8	16	3/8x2	10x50	14-5/8	311	2,500	1
10	254	20-5/8	524	5/8	16	3/8x2	10x50	17-1/8	371	2,500	1
12	305	23	584	5/8	16	1/2x2	13x50	18-1/4	435	2,700	1
14	356	24-1/2	622	5/8	16	1/2x2	13x50	21	464	2,700	1
16	406	27	686	3/4	19	5/8x2-1/2	16x64	23	533	3,700	1
18	457	29	737	3/4	19	5/8x2-1/2	16x64	23	584	3,700	1
20	508	31-5/8	803	3/4	19	5/8x3	16x76	25-5/8	651	2,900	1



## FIRE PROTECTION & WATERWORKS HANGERS

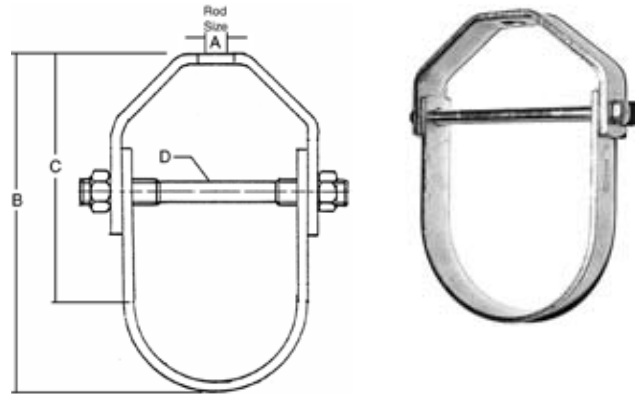
### A 235 Standard Clevis Hanger

**Material :** Zinc plated carbon steel. Also available in Stainless Steel and Bare Metal.

**Application :** Designed for suspending non – insulated stationary pipe, allowing for vertical adjustment.

**Ordering :** Specify pipe size and figure number.

**Approvals :** Complies with Manufacturers Standardization Society SP – 69 Type 1



Listed and approved in 1" thru 8" only

### A 235 STANDARD CLEVIS HANGER

SIZE	"A"		"B"		"C"		"D"		Lower Material		Upper Material		Max Rec Load	Box Qty	
	mm	mm	mm	mm	mm	mm	mm	mm	mm	mm					
1/2	13	3/8	10	2-3/8	73	2-13/32	61	1/4	6	1/8x1	3x25	1/8x1	3x25	300	50
3/4	19	3/8	10	3-5/32	80	2-9/16	65	1/4	6	1/8x1	3x25	1/8x1	3x25	300	50
1	25	3/8	10	3-3/8	86	2-21/32	68	1/4	6	1/8x1	3x25	1/8x1	3x25	300	50
1-1/4	32	3/8	10	3-3/4	95	2--3/4	70	1/4	6	1/8x1	3x25	1/8x1	3x25	610	
1-1/2	38	3/8	10	4-1/16	103	2-7/8	73	1/4	6	1/8x1	3x25	1/8x1	3x25	610	
2	50	3/8	10	4-1/2	114	3-1/4	82	1/4	6	1/8x1	3x25	1/8x1	3x25	610	50
2-1/2	64	1/2	13	5-1/2	140	4-1/16	103	3/8	10	3/16x1-3/16	4.5x30	3/16x1-3/16	4.5x30	1,130	30
3	76	1/2	13	6-1/8	155	4-5/16	110	3/8	10	3/16x1-3/16	4.5x30	3/16x1-3/16	4.5x30	1,350	30
3-1/2	89	1/2	13	6-3/4	171	4-3/4	120	3/8	10	3/16x1-3/16	4.5x30	3/16x1-3/16	4.5x30	1,350	20
4	102	5/8	16	7-5/8	193	5-5/16	135	3/8	10	3/16x1-3/16	4.5x30	1/4x1-3/16	6x30	1,430	20
5	127	5/8	16	8-7/8	225	6-1/16	154	1/2	13	3/16x1-3/16	4.5x30	1/4x1-3/16	6x30	1,430	10
6	152	3/4	19	10	254	6-5/8	169	1/2	13	3/16x1-1/2	4.5x38	1/4x1-1/2	6x38	1,940	1
8	203	3/4	19	12-3/4	324	8-3/8	213	5/8	16	3/16x1-1/2	4.5x38	1/4x1-1/2	6x38	2,000	1
10	254	7/8	22	16-5/8	423	11-11/16	297	3/4	19	1/4x2	6x50	5/16x2	8x50	3,600	1
12	305	7/8	22	18-11/16	475	12-1/4	312	3/4	19	1/4x2	6x50	5/16x2	8x50	3,800	1
14	356	1	25	20-5/16	516	13-15/16	354	7/8	22	1/4x2	6x50	15/32x2	12x50	4,200	1
16	406	1	25	22-1/16	560	14	355	1	25	1/4x2-1/2	6x63	15/32x2-1/2	12x63	4,600	1
18	457	1	25	24-3/4	628	15-11/16	398	1-1/8	28	1/4x2-1/2	6x63	15/32x2-1/2	12x63	4,800	1
20	508	1-1/4	32	27-3/8	695	17-5/16	440	1-1/4	32	5/16x3	8x76	5/8x3	16x76	4,800	1
24	610	1-1/4	32	31-5/8	803	19-9/16	497	1-1/4	32	5/16x3	8x76	5/8x3	16x76	4,800	1



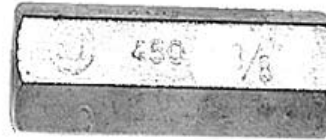
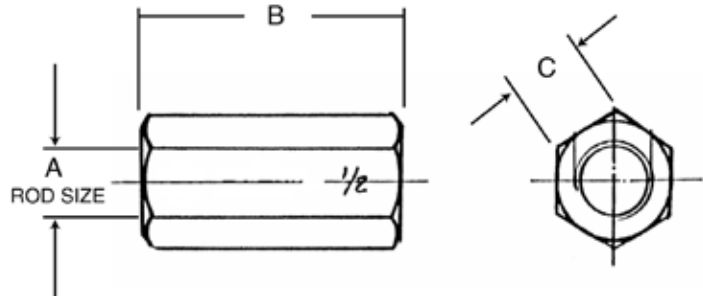
## FIRE PROTECTION & WATERWORKS HANGERS

### A 450 Steel Rod Couplings

Material : Zinc Plated Carbon Steel.

Application: Rod couplings are used to join two pieces of threaded rod together in order to support a pipe hanger holding pipe.

Ordering : Specify figure number and rod size required.



### A 450 STEEL ROD COUPLINGS

SIZE		"A"		"B"		"C"		Box Qty
	mm		mm		mm		mm	
1/4	6	1/4	6	7/8	22	5/16	8	200
3/8	10	3/8	10	1-3/4	44	5/16	8	200
1/2	13	1/2	13	1-3/4	44	3/8	10	100
5/8	16	5/8	16	2	50	1/2	13	100
3/4	19	3/4	19	2-1/4	57	9/16	14	Bulk
7/8	22	7/8	22	2-1/2	64	-	-	Bulk
1	25	1	25	2-1/2	64	-	-	Bulk
1-1/4	32	1-1/4	32	3	76	-	-	Bulk
1-1/2	38	1-1/2	38	3	76	-	-	Bulk



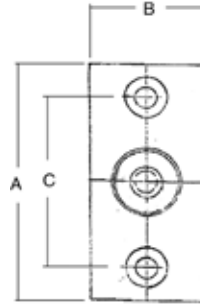
## FIRE PROTECTION & WATERWORKS HANGERS

### A 22Z Zinc Plated Ceiling Flange

**Material:** Zinc Plated Malleable Iron.

**Application:** Designed for attaching to a wooden beam or structure where a hanger rod or threaded rod can be connected to support a pipe hanger.

**Ordering:** Specify figure number and rod size required.



### A 22Z CEILING FLANGE ZINC PLATED

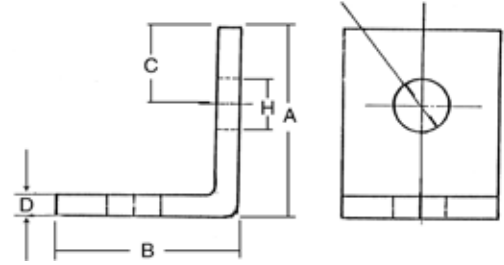
SIZE		"A"		"B"		"C"		Max Rec Load	Box Qty
	mm		mm		mm		mm		
3/8	10	2-3/4	70	1-1/4	32	2	50	180	100
1/2	13	2-3/4	70	1-1/4	32	2	50	180	100



## FIRE PROTECTION & WATERWORKS HANGERS

### A 350 Side Beam Bracket

Material:	Carbon Steel - Zinc Plated
Application:	Designed for attaching a hanger rod to the side of beams or walls.
Ordering:	Specify figure number and Rod size.



### A 350 SIDE BEAM CLAMP

Rod Size		Hole Size "H"		"A"		"B"		"C"		"D"		Max Rec Load		Box Qty
	mm		mm		mm		mm		mm		mm	w/Lag Screw	w/Bolt to Steel	
3/8	10	7/16	11	2	51	1-7/8	47	1/2	13	1/4x1-5/8	6x41	650	1,150	50
1/2	13	9/16	14	2	51	1-7/8	47	13/16	21	1/4x1-5/8	6x41	650	1,150	50
5/8	16	11/16	17.5	3	76	3	76	1	26	3/8x2	10x50	850	2,000	1
3/4	19	13/16	21	3-1/2	89	3-7/16	87	1-1/4	32	3/8x2	10x50	900	2,200	1
7/8	22	15/16	24	3-1/2	89	3-1/2	89	1-1/4	32	1/2x2	12x50	950	2,400	1



## FIRE PROTECTION & WATERWORKS HANGERS

### A 05 Wood Drive Screws

Material: Zinc plated carbon steel.

Application: For fastening light load attachments to wood beams.

Ordering: Specify figure number and screw size #2



### A 05 WOOD DRIVE SCREW

Size	Length		Wgt/100		Box Qty
		mm		kg	
16	2	50	2.2	1	2000



## FIRE PROTECTION & WATERWORKS HANGERS

### A 01/02 Swivel Nuts

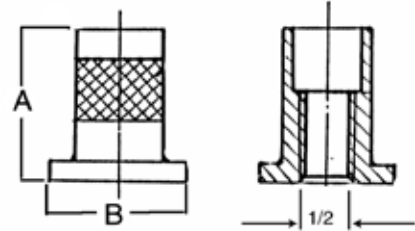
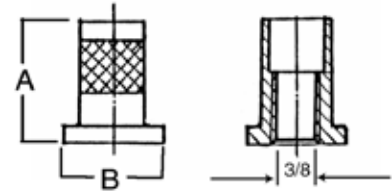
Material: Zinc Plated Carbon Steel.

Application: Nut used for A 100 swivel Ring Hanger which allows for vertical adjustment.

Ordering: Specify figure number and rod size.  
A 01 for 3/8" A 02 for 1/2" rod.



A 01



A 02

### A 01/02 SWIVEL NUTS

FIG#	SIZE		A		B		Box Qty
		mm		mm		mm	
A-01	3/8	10	7/8	22	11/16	17.5	500
A-02	1/2	13	1-1/8	28	1	25	200



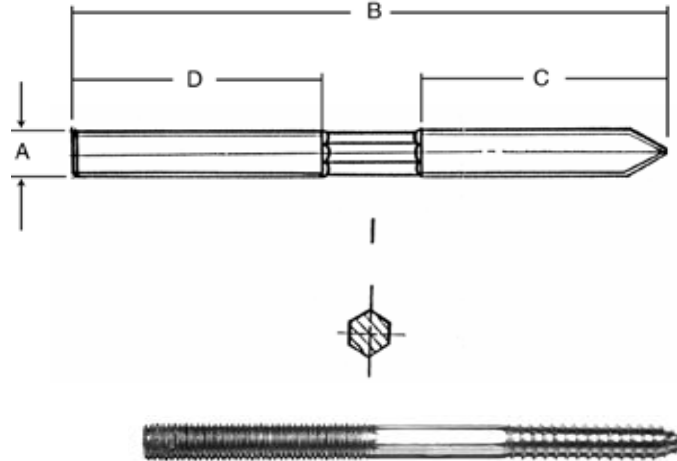
## FIRE PROTECTION & WATERWORKS HANGERS

### A 425 Coach Screw Rod

Material : Carbon Steel Wire

Application : Coach screw rods are used to support a hanger from a wooden joist. Coach screw rods have a lag thread on one end and a machine thread on the other end.

Ordering : Specify figure number and rod size required.



### A 425 COACH SCREW RODS

SIZE		"A"		"B"		"C"		"D"		Box Qty
	mm		mm		mm		mm		mm	
3/8x4	10x102	3/8	10	4	102	1-7/8	48	1-1/2	38	100
3/8x6	10x152	3/8	10	6	152	1-7/8	48	2-1/2	64	100
3/8x8	10x203	3/8	10	8	203	1-7/8	48	2-1/2	64	100
3/8x10	10x254	3/8	10	10	254	1-7/8	48	2-1/2	64	100
3/8x12	10x305	3/8	10	12	305	1-7/8	48	2-1/2	64	100
1/2x6	13x152	1/2	13	6	152	1-7/8	48	2-1/2	64	100
1/2x8	13x203	1/2	13	8	203	1-7/8	48	2-1/2	64	100





## FIRE PROTECTION & WATERWORKS HANGERS

### A 926 All Threaded Rod – Zinc Plated

Material: A 1008 - 1018 Carbon Steel – Threaded to ASME B1.1. Course Thread, 60° profile

Application: Designed for use in pipe hanger assemblies or supporting standard pipe hangers to a structure.

Ordering: Specify figure number and finish.



### A926 ALL THREADED ROD - ZINC PLATED

Rod Size		Color Code	Threads per Inch	10' Lengths (Weight per Length)		Box Qty
	mm					
1/4	6	White	20	1.9	0.88	500
3/8	10	Black	16	2.9	1.33	300
1/2	13	Yellow	3	5.9	2.34	200
5/8	16	Brown	11	8.1	3.68	100
3/4	10	Green	10	11.7	5.30	100
7/8	22	Orange	9	15.8	7.20	60
1	25	Light Blue	8	20.7	9.42	60



## FIRE PROTECTION & WATERWORKS HANGERS

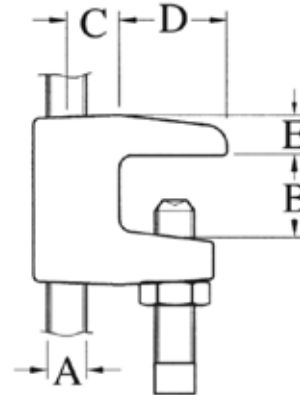
### B 20 Top Beam Clamp - Standard

**Material:** Ductile iron casting with a hardened steel set screw

**Application:** Designed for attaching a hanger rod to the top or bottom flange of a bar joist or other structural shapes where the thickness of the flange does not exceed 5/8".

**Ordering:** Specify figure number and rod size.

**Approvals:** Underwriters' Laboratory Listed and Factory Mutual Approved. Conforms with Manufacturers Standardization Society ANSI/MSS-5P-58 (Type 19 & 23), Install in accordance with ANSI/MSS-5P-69. Exceeds requirements of NFPA-13..



B20



### B 20 TOP BEAM CLAMP - STANDARD

Rod Size		"B"		"C"		"D"		"E"		Max Rec Loads	Box Qty
	mm		mm		mm		mm		mm		
3/8	10	3/4	25	.49	12.5	1	25.4	3/8	9.5	500	75
1/2	13	3/4	25	.49	12.5	1	25.4	3/8	9.5	500	75
5/8	16	1	25	2-3/16	55	1-13/16	46	3/8	10	600	50
3/4	19	1-1/8	28	2-5/16	58	1-13/16	46	1/2	13	800	25



## FIRE PROTECTION & WATERWORKS HANGERS

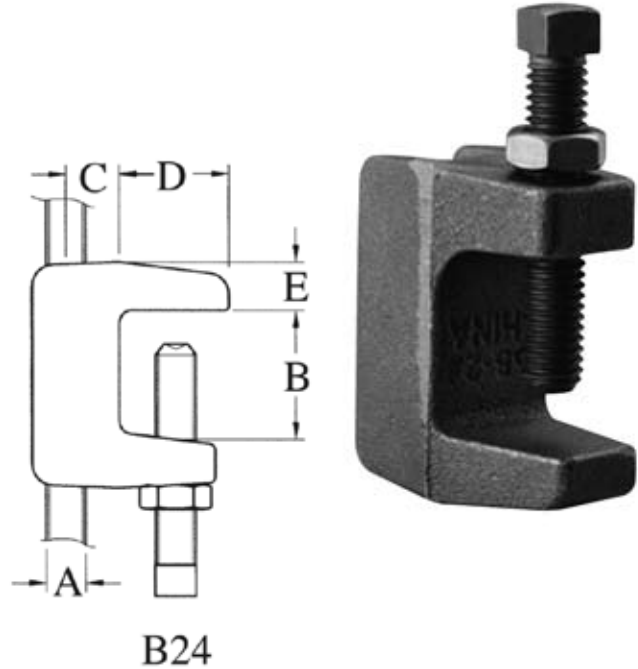
### B 24 Top Beam Clamp - Wide Mouth

**Material:** Ductile iron casting with a hardened steel set screw

**Application:** Designed for attaching a hanger rod to the top or bottom flange of a bar joist or other structural shapes where the thickness of the flange does not exceed 1 +"

**Ordering:** Specify figure number, and rod size.

**Approvals:** Underwriters' Laboratory Listed and Factory Mutual Approved. Conforms with Manufacturers Standardization Society ANSI/MSS-5P-58 (Type 19 & 23), Install in accordance with ANSI/MSS-5P-69. Exceeds requirements of NFPA-13..



### B 24 TOP BEAM CLAMP - WIDE MOUTH

Rod Size		"B"		"C"		"D"		"E"		Max Rec Loads	Box Qty
	mm		mm		mm		mm		mm		
3/8	10	1-1/8	28.6	.49	12.5	1	25.4	7/16	11.1	950	60
1/2	12	1-1/8	28.6	.49	12.5	1	25.4	7/16	11.1	950	55



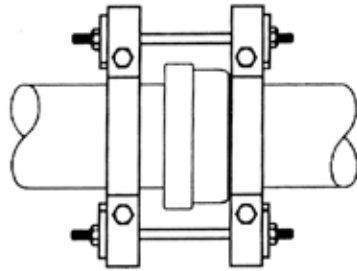
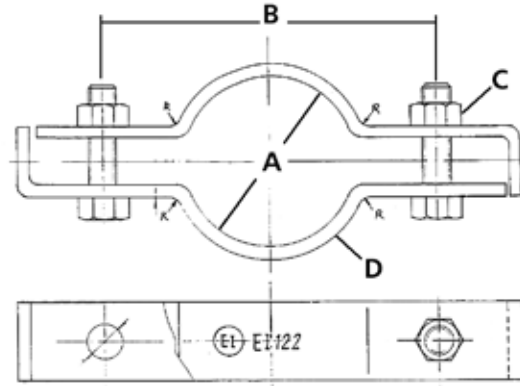
## FIRE PROTECTION & WATERWORKS HANGERS

### A 122 Underground Bell Clamp for Ductile Iron Pipe

Material: Carbon Steel

Application: Used as a safety device on a bell and spigot, or mechanical joint cast iron pipe where reversal stoppage or change in direction flow necessitates reinforcement. Two square plate washers supplied with each clamp.

Ordering: Specify figure number and pipe size.



These clamps are all sized to accommodate Ductile Iron Pipe only.

### A 122 UNDERGROUND BELL CLAMP FOR DUCTILE IRON PIPE

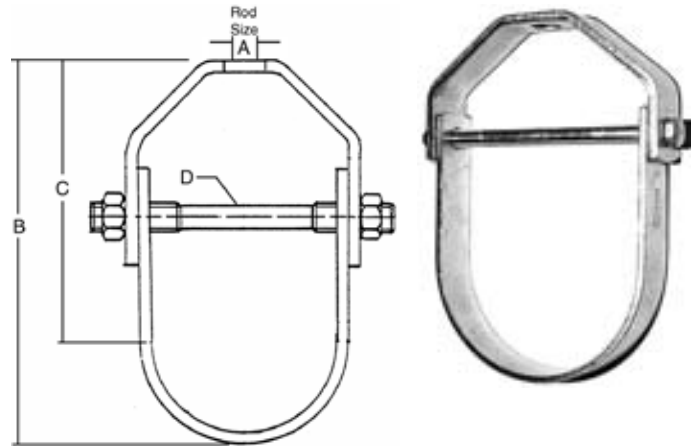
Size	A		B		C		D		Box Qty	
	mm	Pipe O.D.	mm	mm	mm	mm	mm	mm		
4	102	4.80	121.90	7-7/8	200	5/8	16	3/8x1-1/2	10x38	1
6	152	6.90	175.30	10	256	5/8	16	3/8x1-1/2	10x38	1
8	203	9.05	229.90	13	328	3/4	19	3/8x2	10x50	1
10	254	11.10	281.90	15-7/8	382	3/4	19	1/2x2	12x50	1
12	305	13.20	335.30	17-5/16	440	3/4	19	1/2x2	12x50	1
14	356	15.30	388.60	19-11/16	500	7/8	22	5/8x3	16x76	1
16	406	17.40	442.00	21-1/4	540	7/8	22	5/8x4	16x100	1
18	457	19.50	495.30	23-5/8	600	1	25	5/8x4	16x100	1



## FIRE PROTECTION & WATERWORKS HANGERS

### A 920 Clevis Hanger for Ductile Iron Pipe

Material:	Carbon steel
Finish:	Standard finish bare metal. Also available Zinc plated, or hot dipped galvanized.
Service:	Designed for suspending stationary ductile iron and allowing for vertical adjustment.
Ordering:	Specify figure number and pipe size.



### A920 CLEVIS HANGER FOR DUCTILE IRON PIPE

SIZE	PIPE O.D.		A		B		C		D		Upper Material		Lower Material		Max Rec Load		Box Qty	
	mm	mm	mm	mm	mm	mm	mm	mm	mm	mm	mm	mm	lbs.	kg				
4	102	4.80	122	5/8	16	8	203	5-3/8	137	1/2	13	1/4x1-1/4	6x32	3/16x1-1/4	4.5x32	1430	650	1
6	152	6.90	175	3/4	19	10-3/8	263	7	180	1/2	13	1/4x1-1/2	6x38	3/16x1-1/2	4.5x38	1940	882	1
8	203	9.05	230	7/8	22	13	329	8-1/4	209	5/8	16	3/8x1-1/2	10x38	1/4x1-1/2	6x38	2000	909	1
10	254	11.10	282	7/8	22	15-3/8	392	9-13/16	250	3/4	19	3/8x2	10x50	1/4x2	6x50	3600	1636	1





## INDUSTRIAL HANGERS & CLAMPS

Pipe hangers and clamps offered in this section are designed for support and attachment of pipe to structural members. Roller hangers are designed to compensate for longitudinal movement due to the expansion and contraction of both insulated and non insulated (lower).

---

**Material:** Carbon steel is used in the manufacturing of regular pipe clamps in this section.

---

**Finishes:** All standard hangers available in this section are available in a standard black finish. Zinc plating, and hot dipped galvanized finishes are also available. Clamps in this section can also be either painted with a primer finish or can be completely painted to your exact specifications.

---

**Approvals:** As noted on each design these hangers are manufactured to a MSS SP - 69 standard.

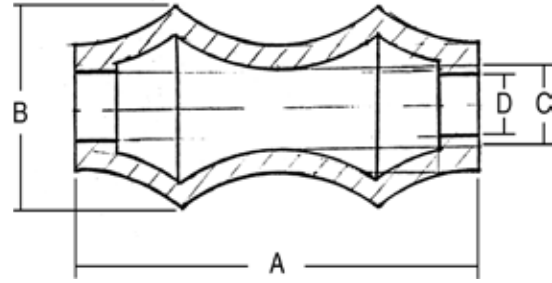
## INDUSTRIAL HANGERS & CLAMPS

### A 320 Pipe Roller

Material: Cast Iron

Application: Designed for supporting pipe runs with longitudinal movement also a steel rod axle must be used with this pipe roller.

Ordering: Specify figure number and pipe size required.



### A 320 PIPE ROLLER

Size	A		B		C		D		Box Qty	
	mm	mm	mm	mm	mm	mm	mm			
1-1/4-1-1/2	32-38	3	76	1-1/4	32	3/4	19	7/16	11	1
2-2-1/2	50-64	3-1/4	83	1-3/8	35	7/8	22	9/16	14	1
3	76	3-7/8	98	1-1/2	38	1	25	9/16	14	1
3-1/2-4	89-102	5	124	1-3/4	45	1	25	21/32	17	1
5	127	5-7/8	150	2	51	1-5/32	29	21/32	17	1
6	152	6-7/8	175	2-1/4	57	1-1/4	32	7/8	21	1
8	203	8-7/8	225	2-5/8	67	1-1/2	38	1	24	1
10	254	11	279	3-3/8	86	1-3/4	45	1	24	1
12	305	12-3/4	324	3-7/8	99	2	51	1	24	1
14	356	14-3/8	365	4-5/8	118	2-3/4	70	1-7/32	31	1
16	406	16-5/32	410	4-3/4	121	2-15/16	75	1-11/32	34	1
18	457	18-1/4	464	5-3/4	146	3-3/4	95	1-11/32	34	1
20	508	20-5/8	524	6	153	3-15/16	100	1-1/2	37	1
24	610	24-3/4	629	7	178	4	102	1-9/16	40	1



## INDUSTRIAL HANGERS & CLAMPS

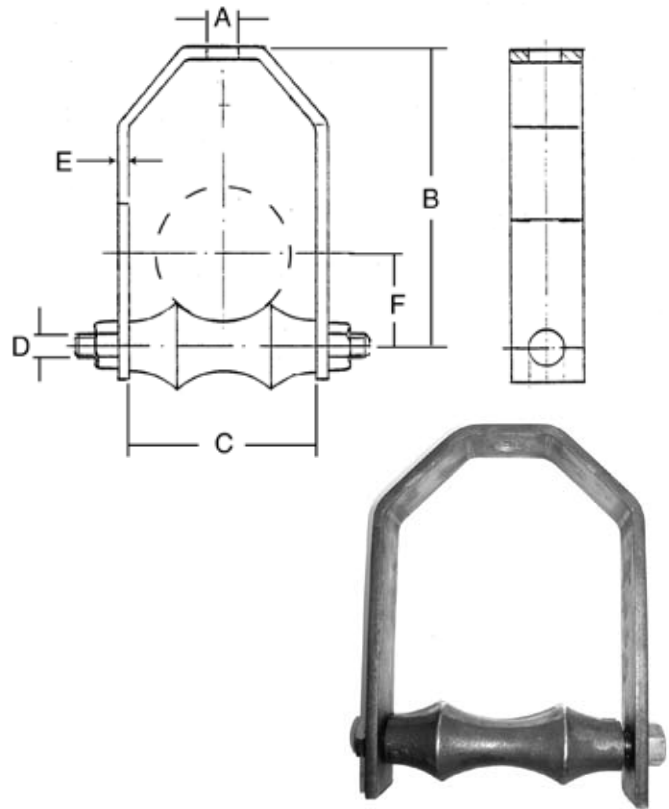
### A 466 Standard Roller Hanger

**Material:** Carbon Steel body, cast iron roller.

**Application:** Designed for suspending pipe where longitudinal movement and vertical adjustment is required. When this hanger is used with insulation a pipe protection saddle must be used.

**Ordering:** Specify figure number and pipe size. **When insulation is being used take diameter of pipe, plus two times the insulation thickness to arrive at actual size required.**

**Approvals:** Complies with Manufacturers' Standardization Society SP - 69 Type 43.



### A 466 STANDARD ROLLER HANGER

SIZE	A		B		C		D		E		F		Max Rec Load	Box Qty	
	mm	mm	mm	mm	mm	mm	mm	mm	mm	mm					
1-1/2	38	1/2	13	5-1/4	133	3	77	3/8	10	3/16x1-1/4	5x32	1-3/8	34	250	1
2	50	1/2	13	5-1/4	133	3-1/4	82	1/2	13	3/16x1-1/4	5x32	1-5/8	41	280	1
2-1/2	64	1/2	13	5-1/4	146	3-1/4	82	1/2	13	3/16x1-1/4	5x32	1-7/8	47	225	1
3	76	1/2	13	5-3/4	162	3-7/8	98	1/2	13	5/16x1-1/4	5x32	2-1/8	53	310	1
3-1/2	89	5/8	16	7-1/4	178	4-15/16	122	5/8	16	1/4x1/2	6x38	2-9/16	64	390	1
4	102	5/8	16	7-1/4	192	4-15/16	125	5/8	16	1/4x1/2	6x38	2-13/16	70	475	1
5	127	5/8	16	9-3/16	232	6	152	5/8	16	1/4x2	10x45	3-7/16	87	600	1
6	152	3/4	19	11	232	7	181	3/4	19	1/4x2	10x50	4	102	780	1
8	203	7/8	22	12-5/8	322	9	235	7/8	22	3/8x2-1/2	10x63	5-1/8	130	780	1
10	254	7/8	22	14-7/8	382	11-9/64	285	7/8	22	1/2x2	10x63	6-3/8	162	965	1
12	305	7/8	22	17-1/2	443	13	336	7/8	22	1/2x2	12x63	7-7/16	189	1,200	1
14	356	1	25	19-3/4	479	14-1/2	368	1-1/8	29	1/2x2-1/2	12x63	8-3/8	213	1,200	1
16	406	1	25	20-1/2	528	16-1/2	419	1-1/4	32	1/2x3	12x63	9-3/8	238	1,200	1
18	457	1	25	23	580	18-1/2	466	1-1/4	32	1/2x3	12x76	10-1/2	267	1,400	1
20	508	1-1/4	32	25-3/8	660	20-3/4	525	1-3/8	35	5/8x3	16x76	11-5/8	295	1,600	1
24	610	1-1/2	38	29-1/2	740	24-13/16	635	1-1/2	38	5/8x4	16x102	13-7/8	352	1,800	1





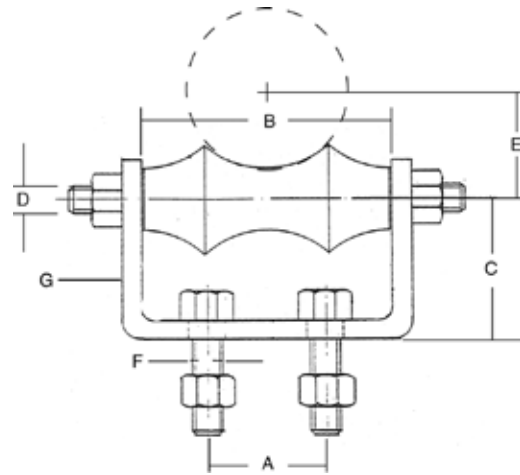
## INDUSTRIAL HANGERS & CLAMPS

### A 469 Standard Roller Chair

**Material:** Carbon Steel body, cast iron roller.

**Application:** Designed for supporting pipe with longitudinal movement. When this hanger is used with insulation a pipe protection saddle must be used.

**Ordering:** Specify figure number and pipe size. **When insulation is being used take diameter of pipe, plus two times the insulation thickness to arrive at actual size required.**



### A 469 STANDARD ROLLER CHAIR

SIZE	A		B		C		D		E		F		G		Max Rec Load	Box Qty	
	mm	mm	mm	mm	mm	mm	mm	mm	mm	mm	mm	mm	mm				
1-1/2	38	1-1/2	38	3	76	1-1/2	38	3/8	10	1-3/8	34	3/8x1-1/2	10x38	1/4x1-1/4	6x32	390	1
2	50	1-1/2	38	3	82	1-3/4	44	1/2	13	1-5/8	40	3/8x1-1/2	10x38	1/4x1-1/4	6x32	390	1
2-1/2	64	1-1/2	38	3	82	1-3/4	44	1/2	13	1-7/8	47	3/8x1-1/2	10x38	1/4x1-1/4	6x32	390	1
3	76	2	50	3-7/8	99	1-3/4	44	1/2	13	2-1/8	53	3/8x1-1/2	10x38	1/4x1-1/4	6x32	390	1
3-1/2	89	2-1/2	64	4-7/8	126	2-1/2	64	5/8	16	2-9/16	64	1/2x1-1/2	13x38	3/8x1-1/2	10x38	390	1
4	102	2-1/2	64	4-7/8	126	2-1/2	64	5/8	16	2-13/16	70	1/2x1-1/2	13x38	3/8x1-1/2	10x38	950	1
5	127	3	76	6	152	2-1/2	64	5/8	16	3-7/16	87	1/2x1-1/2	13x38	3/8x1-1/2	10x38	950	1
6	152	3	76	7	178	2-3/4	70	3/4	19	4	102	1/2x1-1/2	13x38	3/8x2	10x50	950	1
8	203	3-1/2	88	9	229	3-3/4	95	7/8	22	5-1/8	130	5/8x1-1/2	16x38	3/8x2	10x50	2,100	1
10	254	5-1/4	133	11-1/8	283	4-1/8	105	7/8	22	6-3/8	162	5/8x2	16x50	1/2x2	12x50	2,100	1
12	305	5-1/2	140	13	330	4-3/8	111	7/8	22	7-7/16	189	5/8x2	16x50	1/2x2	12x50	2,400	1
14	356	6-1/2	165	14-1/2	368	5-1/4	133	1-1/8	28	8-3/8	213	3/4x2	19x50	1/2x2-1/2	12x64	3,130	1
16	406	8-1/4	210	16-1/2	419	5-5/8	143	1-1/4	32	9-3/8	238	3/4x2-1/2	19x64	1/2x3	12x76	3,970	1
18	457	9-1/4	235	18-1/2	470	6-3/4	171	1-1/4	32	10-1/2	267	3/4x2-1/2	19x64	1/2x3	12x76	4,200	1
20	508	10-1/4	260	20-3/4	552	7	178	1-3/8	34	11-5/8	295	3/4x2-1/2	19x64	1/2x3	12x76	4,550	1
24	610	12-1/4	310	24-3/4	629	7-7/8	200	1-1/2	38	13-7/8	352	7/8x3	22x76	5/8x4	16x102	6,160	1



## INDUSTRIAL HANGERS & CLAMPS

### A 494 Single Pipe Roll

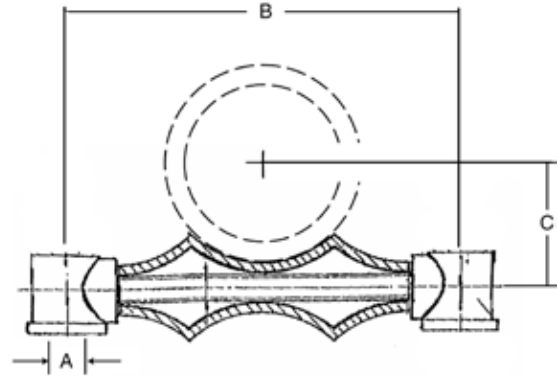
**Material:** Steel axle, cast iron roller, malleable iron socket ends

**Finish:** Standard finish is bare metal, Zinc plated, hot dipped galvanized are also available

**Service:** Designed for suspending piping where longitudinal movement and vertical adjustment is required. Threaded rods sold separately.

**Approvals:** Complies with Manufacturers Standardization Society SP - 69 Type 41

**Ordering:** Specify part number, pipe size, insulation thickness and finish.



### A 494 SINGLE PIPE ROLL

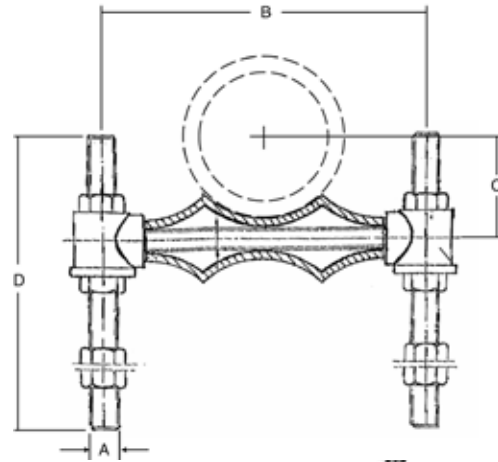
Pipe Socket		A		B		C		Max Rec Loads		Box Qty	
Size	mm	Size	mm	mm	mm	mm	mm	lbs.	kg		
1	25	1	3/8	10	4-1/2	114	1-1/16	27	600	270	1
1-1/4	32	1	3/8	10	4-1/2	114	1-1/4	32	600	270	1
1-1/2	38	1	3/8	10	4-1/2	114	1-3/8	35	600	270	1
2	50	2	1/2	13	5-1/4	133	1-5/8	41	600	270	1
2-1/2	64	2	1/2	13	5-1/4	133	1-7/8	47	660	270	1
3	76	2	1/2	13	5-3/4	146	2-1/8	53	700	315	1
3-1/2	89	3	5/8	16	7-3/8	187	2-9/16	65	750	338	1
4	102	3	5/8	16	7-3/8	187	2-13/16	71	750	338	1
5	127	3	5/8	16	8-3/8	213	3-7/16	87	750	338	1
6	152	4	3/4	19	9-1/2	241	4	102	1070	482	1
8	203	5	7/8	22	11-7/8	301	5-1/8	130	1350	608	1
10	254	5	7/8	22	13-7/8	353	6-3/8	162	1730	779	1
12	305	5	7/8	22	15-3/4	400	7-7/16	189	2400	1080	1
14	356	6	1	25	17-5/8	448	8-3/8	213	3130	1409	1
16	406	7	1	25	20	508	9-3/8	236	3970	1787	1
18	457	7	1	25	22	558	10-1/2	267	4200	1890	1
20	508	8	1-1/4	32	24-5/8	626	11-5/8	295	4550	2048	1
24	610	9	1-1/2	38	29-5/8	752	13-7/8	352	6160	2800	1



## INDUSTRIAL HANGERS & CLAMPS

### A 497 Adjustable Pipe Roller Support

- Material:** Steel axle cast iron roller, malleable iron socket ends
- Finish:** Standard finish is bare metal, Zinc plated and hot dipped galvanized are also available.
- Service:** Designed for suspending piping where longitudinal movement and vertical adjustment is required. Threaded rod ordered separately.
- Ordering:** Specify part number, pipe size, insulation thickness and finish.



### A 497 ADJUSTABLE PIPE ROLL SUPPORT

Pipe Socket		Socket	A		B		C		D		Max Rec Loads		Box Qty
Size	mm	Size		mm		mm		mm		mm	lbs.	kg	
1	25	#1	3/8	10	4-1/2	114	1-1/16	27	12	305	600	270	1
1-1/4	32	#1	3/8	10	4-1/2	114	1-1/4	32	12	305	600	270	1
1-1/2	38	#1	3/8	10	4-1/2	114	1-3/8	35	12	305	600	270	1
2	50	#2	1/2	13	5-1/4	133	1-5/8	41	12	305	600	270	1
2-1/2	64	#2	1/2	13	5-1/4	133	1-7/8	47	12	305	660	270	1
3	76	#2	1/2	13	5-3/4	146	2-1/8	53	12	305	700	315	1
3-1/2	89	#3	5/8	16	7-3/8	187	2-9/16	65	12	305	750	338	1
4	102	#3	5/8	16	7-3/8	187	2-13/16	71	12	305	750	338	1
5	127	#3	5/8	16	8-3/8	213	3-7/16	87	12	305	750	338	1
6	152	#4	3/4	19	9-1/2	241	4	102	12	305	1070	482	1
8	203	#5	7/8	22	11-7/8	301	5-1/8	130	12	305	1350	608	1
10	254	#5	7/8	22	13-7/8	353	6-3/8	162	12	305	1730	779	1
12	305	#5	7/8	22	15-3/4	400	7-7/16	189	12	305	2400	1080	1
14	356	#6	1	25	17-5/8	448	8-3/8	213	12	305	3130	1409	1
16	406	#7	1	25	20	508	9-3/8	236	18	457	3970	1787	1
18	457	#7	1	25	22	558	10-1/2	558	18	457	4200	1890	1
20	508	#8	1-1/4	32	24-5/8	626	11-5/8	295	18	457	4550	2048	1
24	610	#9	1-1/2	38	29-5/8	752	13-7/8	352	24	610	6160	2800	1



## INDUSTRIAL HANGERS & CLAMPS

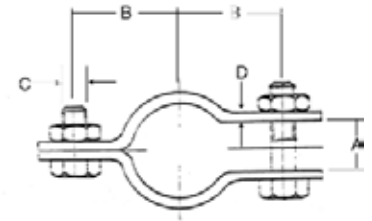
### A 125 Standard 2-Bolt Pipe Clamp

**Material :** Zinc Plated Carbon Steel Sizes 1/2" thru 36". Also available in 316 Stainless Steel and Galvanized as well.

**Application :** Used to suspend non-insulated industrial pipe lines. Also used with A 344 Weldless eye nut. Eye nut allows movement of the pipe in a horizontal direction. Should not be used as a standard riser clamp

**Ordering :** Specify pipe size, figure number, and material.

**Approvals :** Complies with Manufacturers Standardization Society SP – 69 (Type 4 )



### A 125 STANDARD 2-BOLT PIPE CLAMP

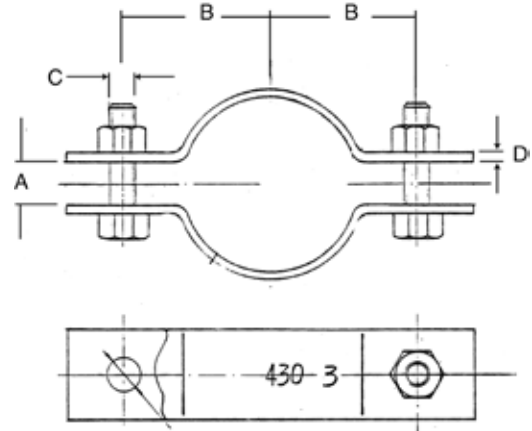
SIZE	"A"		"B"		"C"		"D"		Max Rec Load		Box Qty	
	mm	mm	mm	mm	mm	mm	mm	mm				
1/2	13	5/8	16	2-1/2	64	5/16	8	1/8x1	3x25	500	450	25
3/4	19	5/8	16	2-5/8	66	5/16	8	1/8x1	3x25	500	450	25
1	25	5/8	16	2-15/16	74	5/16	8	1/8x1	3x25	500	450	25
1-1/4	32	5/8	16	2-1/4	82	5/16	8	1/8x1	3x25	500	450	25
1-1/2	38	7/8	22	2-3/4	96	5/16	8	1/8x1	3x25	1050	750	25
2	50	7/8	22	4-1/2	114	1/2	13	1/4x1	6x25	1050	940	25
2-1/2	64	7/8	22	5	128	1/2	13	1/4x1	6x25	1050	940	20
3	76	7/8	22	6	152	1/2	13	1/4x1	6x25	1050	940	20
3-1/2	89	7/8	22	6-5/32	156	1/2	13	1/4x1	6x25	1050	940	20
4	102	7/8	22	6-5/8	168	5/8	16	1/4x1-1/4	6x32	1050	940	20
5	127	7/8	22	8-3/16	206	5/8	16	1/4x1-1/4	6x32	1050	940	15
6	152	7/8	22	10-1/4	260	3/4	19	3/8x1-1/2	10x38	1,620	1,440	1
8	203	1	25	12-1/2	318	3/4	19	3/8x1-1/2	10x38	1,620	1,440	1
10	254	1	25	15	382	7/8	22	1/2x2	12x50	2,500	2,230	1
12	305	1	25	16-3/4	426	7/8	22	1/2x2	12x50	2,500	2,230	1
14	356	1-1/8	28	18	458	7/8	22	1/2x2-1/2	12x64	2,500	2,230	1
16	406	1-1/4	32	20-1/2	520	7/8	22	1/2x2-1/2	12x64	2,500	2,230	1
18	457	1-1/4	32	24	610	7/8	22	5/8x2-1/2	16x64	3,050	2,720	1
20	508	1-3/8	35	25-1/2	648	1-1/4	32	5/8x3	16x76	3,050	2,720	1
24	610	1-5/8	41	32-1/4	820	1-1/4	32	5/8x3	16x76	3,050	2,720	1
30	762	2	50	36-9/16	928	1-1/2	38	3/4x4	19x102	3,050	2,720	1
36	914	2	50	44-1/2	1130	1-1/2	38	3/4x5	19x127	3,500	3,360	1



## INDUSTRIAL HANGERS & CLAMPS

### A 430 Heavy Duty 2-Bolt Pipe Clamp

Material:	Carbon Steel
Application:	Designed for suspending non-insulated heavy duty pipe runs. Also to be used with a weldless eye nut and a welded eye rod.
Ordering:	Specify figure number and pipe size.
Approvals:	Complies with Manufacturers' Standardization Society SP - 69 Type 4.



### A 430 HEAVY DUTY 2-BOLT PIPE CLAMP

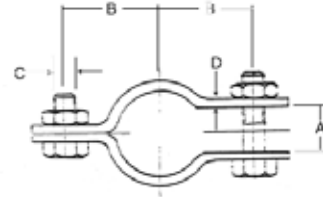
Size	A		B		C		D		Max Rec Load		Box Qty	
	mm	mm	mm	mm	mm	mm	mm	mm	650°F	750°F		
3	76	1	25	3-1/4	83	3/4	19	1/4x1-1/2	6x38	3,370	3,005	1
4	102	1	25	3-5/8	92	7/8	22	3/8x2	10x50	3,515	3,135	1
5	127	1	25	4-5/8	117	7/8	22	3/8x2-1/2	10x64	3,515	3,135	1
6	152	1	25	5-1/2	140	1	25	1/2x2-1/2	13x64	4,865	4,350	1
8	203	1-1/8	29	7-1/8	181	1	25	1/2x2-1/2	13x64	4,865	4,340	1
10	254	1-1/4	32	7-7/8	200	1-1/4	32	5/8x2-1/2	16x64	6,010	5,360	1
12	305	1-11/16	42	10-1/8	257	1-1/2	38	3/4x3	18x76	8,675	7,740	1
14	356	1-11/16	42	10-1/2	267	1-1/2	38	3/4x4	18x100	9,120	8,135	1
16	406	1-11/16	42	11-5/8	295	1-1/2	38	3/4x4	18x100	9,120	8,135	1
18	457	1-11/16	42	12-3/4	324	1-1/2	38	3/4x6	18x152	13,800	-	1
20	508	1-11/16	42	14-1/4	362	1-1/2	38	1x6	25x152	15,300	-	1
24	610	3-1/4	83	17-1/2	445	2-1/4	57	1x6	25x152	16,300	-	1



## INDUSTRIAL HANGERS & CLAMPS

### A 125SS Standard 2-Bolt Pipe Clamp Stainless Steel

- Material:** 316-L Stainless Steel
- Application:** Used to suspend non insulated industrial stainless steel pipe lines. Also used with A 344 Weldless eye nut. Eye nut allows movement of the pipe in a horizontal direction.
- Ordering:** Specify pipe size, figure number, and material.
- Approvals:** Complies with Manufacturers Standardization Society SP – 69 Type 4



### A 125SS STANDARD 2-BOLT PIPE CLAMP

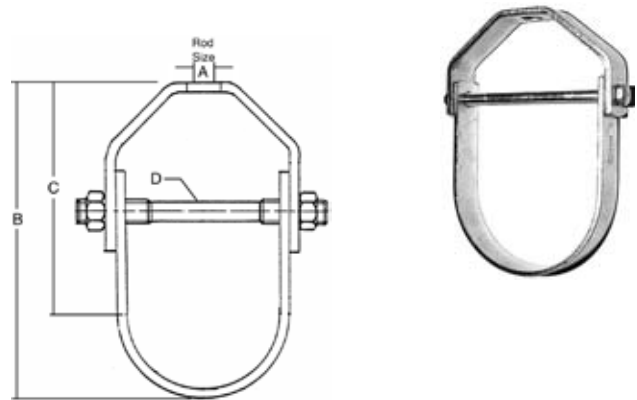
SIZE	"A"		"B"		"C"		"D"		Max Rec Load		Box Qty	
	mm	mm	mm	mm	mm	mm	mm	mm	650°F	750°F1		
1/2	13	5/8	16	2-1/2	64	5/16	8	1/8x1	3x25	500	450	25
3/4	19	5/8	16	2-5/8	66	5/16	8	1/8x1	3x25	500	450	25
1	25	5/8	16	2-15/16	74	5/16	8	1/8x1	3x25	500	450	25
1-1/4	32	5/8	16	2-1/4	82	5/16	8	1/8x1	3x25	500	450	25
1-1/2	38	7/8	22	2-3/4	96	5/16	8	1/8x1	3x25	1050	750	25
2	50	7/8	22	4-1/2	114	1/2	13	1/4x1	6x25	1050	940	25
2-1/2	64	7/8	22	5	128	1/2	13	1/4x1	6x25	1050	940	20
3	76	7/8	22	6	152	1/2	13	1/4x1	6x25	1050	940	20
3-1/2	89	7/8	22	6-5/32	156	1/2	13	1/4x1	6x25	1050	940	20
4	102	7/8	22	6-5/8	168	5/8	16	1/4x1-1/4	6x32	1050	940	20
5	127	7/8	22	8-3/16	206	5/8	16	1/4x1-1/4	6x32	1050	940	15
6	152	7/8	22	10-1/4	260	3/4	19	3/8x1-1/2	10x38	1,620	1,440	1s
8	203	1	25	12-1/2	318	3/4	19	3/8x1-1/2	10x38	1,620	1,440	1
10	254	1	25	15	382	7/8	22	1/2x2	12x50	2,500	2,230	1
12	305	1	25	16-3/4	426	7/8	22	1/2x2	12x50	2,500	2,230	1
14	356	1-1/8	28	18	458	7/8	22	1/2x2-1/2	12x64	2,500	2,230	1
16	406	1-1/4	32	20-1/2	520	7/8	22	1/2x2-1/2	12x64	2,500	2,230	1
18	457	1-1/4	32	24	610	7/8	22	5/8x2-1/2	16x64	3,050	2,720	1
20	508	1-3/8	35	25-1/2	648	1-1/4	32	5/8x3	16x76	3,050	2,720	1
24	610	1-5/8	41	32-1/4	820	1-1/4	32	5/8x3	16x76	3,050	2,720	1
30	762	2	50	36-9/16	928	1-1/2	38	3/4x4	19x102	3,050	2,720	1
36	914	2	50	44-1/2	1130	1-1/2	38	3/4x5	19x127	3,500	3,360	1



## INDUSTRIAL HANGERS & CLAMPS

### A 235SS Stainless Steel Standard Clevis Hanger

Material:	316 Stainless steel.
Application:	Designed for suspending non insulated stationary stainless steel pipe, allowing for vertical adjustment.
Ordering:	Specify pipe size and figure number.
Approvals:	Complies with Manufacturers Standardization Society SP – 69 Type 1



### A 235SS STAINLESS STEEL STANDARD CLEVIS HANGER

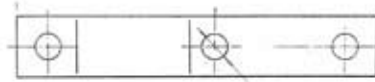
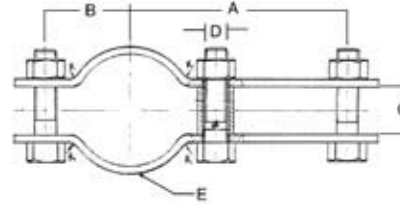
SIZE	"A"		"B"		"C"		"D"		Lower Material		Upper Material		Max Rec Load	Box Qty	
	mm		mm		mm		mm		mm		mm				
1/2	13	3/8	10	2-3/8	73	2-13/32	61	1/4	6	1/8x1	3x25	1/8x1	3x25	300	50
3/4	19	3/8	10	3-5/32	80	2-9/16	65	1/4	6	1/8x1	3x25	1/8x1	3x25	300	50
1	25	3/8	10	3-3/8	86	2-21/32	68	1/4	6	1/8x1	3x25	1/8x1	3x25	300	50
1-1/4	32	3/8	10	3-3/4	95	2--3/4	70	1/4	6	1/8x1	3x25	1/8x1	3x25	610	50
1-1/2	38	3/8	10	4-1/16	103	2-7/8	73	1/4	6	1/8x1	3x25	1/8x1	3x25	610	50
2	50	3/8	10	4-1/2	114	3-1/4	82	1/4	6	1/8x1	3x25	1/8x1	3x25	610	50
2-1/2	64	1/2	13	5-1/2	140	4-1/16	103	3/8	10	3/16x1-3/16	4.5x30	3/16x1-3/16	4.5x30	1,130	30
3	76	1/2	13	6-1/8	155	4-5/16	110	3/8	10	3/16x1-3/16	4.5x30	3/16x1-3/16	4.5x30	1,350	30
3-1/2	89	1/2	13	6-3/4	171	4-3/4	120	3/8	10	3/16x1-3/16	4.5x30	3/16x1-3/16	4.5x30	1,350	20
4	102	5/8	16	7-5/8	193	5-5/16	135	3/8	10	3/16x1-3/16	4.5x30	1/4x1-3/16	6x30	1,430	20
5	127	5/8	16	8-7/8	225	6-1/16	154	1/2	13	3/16x1-3/16	4.5x30	1/4x1-3/16	6x30	1,430	10
6	152	3/4	19	10	254	6-5/8	169	1/2	13	3/16x1-1/2	4.5x38	1/4x1-1/2	6x38	1,940	1
8	203	3/4	19	12-3/4	324	8-3/8	213	5/8	16	3/16x1-1/2	4.5x38	1/4x1-1/2	6x38	2,000	1
10	254	7/8	22	16-5/8	423	11-11/16	297	3/4	19	1/4x2	6x50	5/16x2	8x50	3,600	1
12	305	7/8	22	18-11/16	475	12-1/4	312	3/4	19	1/4x2	6x50	5/16x2	8x50	3,800	1
14	356	1	25	20-5/16	516	13-15/16	354	7/8	22	1/4x2	6x50	15/32x2	12x50	4,200	1
16	406	1	25	22-1/16	560	14	355	1	25	1/4x2-1/2	6x63	15/32x2-1/2	12x63	4,600	1
18	457	1	25	24-3/4	628	15-11/16	398	1-1/8	28	1/4x2-1/2	6x63	15/32x2-1/2	12x63	4,800	1
20	508	1-1/4	32	27-3/8	695	17-5/16	440	1-1/4	32	5/16x3	8x76	5/8x3	16x76	4,800	1
24	610	1-1/4	32	31-5/8	803	19-9/16	497	1-1/4	32	5/16x3	8x76	5/8x3	16x76	4,800	1



## INDUSTRIAL HANGERS & CLAMPS

### A56 3-Bolt Light Duty Pipe Clamp

- Material:** Carbon Steel
- Application:** Designed for suspending high temperature maximum (750 \*) pipe runs requiring insulation.
- Ordering:** Specify figure number and pipe size.
- Approvals:** Complies with Manufacturers Standardization Society SP-69 Type 3.



### A56 3-BOLT LIGHT DUTY PIPE CLAMP

SIZE	A		B		C		D		E		Box Qty	
	mm	mm	mm	mm	mm	mm	mm	mm	mm			
1/2	13	3-1/2	89	1-9/64	29	3/8	10	3/8x13/16	3/8x30	1/8x1	3x25	10
3/4	19	3-1/4	85	1-5/8	41	5/8	16	3/8x1-3/8	3/8x35	1/8x1	3x25	10
1	25	3-9/16	90	1-3/8	35	5/8	16	3/8x1-3/8	3/8x35	1/8x1	3x25	10
1-1/4	32	4-3/32	95	2	50	3/4	19	3/8x1-9/16	3/8x40	9/64x1	3.5x25	10
1-1/2	38	4-3/8	111	2	50	7/8	22	3/8x2	3/8x50	9/64x1	3.5x25	10
2	50	5-5/6	135	2-5/16	59	1	25	1/2x2-3/16	1/2x55	1/4x1	6x25	10
2-1/2	64	5-11/16	145	2-9/16	65	1	25	1/2x2-3/16	1/2x55	1/4x1	6x25	10
3	76	6-1/16	152	2-13/16	72	1	25	1/2x2-3/16	1/2x55	1/4x1	6x25	5
4	102	6-1/2	166	3-3/8	86	1	25	5/8x2-3/8	5/8x60	1/4x1-1/4	6x32	1
5	127	7	178	4	102	1	25	5/8x2-3/8	5/8x60	1/4x1-1/4	6x32	1
6	152	8-1/16	205	4-1/2	115	1-1/2	38	3/4x3-5/32	3/4x80	3/8x1-1/2	10x38	1
8	203	9-13/16	250	6-5/16	160	1-1/2	38	3/4x3-5/32	3/4x80	3/8x1-1/2	10x38	1
10	254	11-13/32	290	7-11/16	195	1-1/2	38	7/8x3-9/16	7/8x90	15/32x2	12x50	1
12	305	12-23/32	322	8-11/16	220	1-1/2	38	7/8x3-9/16	7/8x90	15/32x2	12x50	1
14	356	14	355	9-15/16	252	2	50	7/8x3-15/16	7/8x100	15/32x2-1/2	12x64	1
16	406	13-3/4	349	10	254	2	50	7/8x3-15/16	7/8x100	15/32x2-1/2	12x64	1
18	457	14-11/16	381	11-1/4	286	2	50	1x4-5/16	1x110	5/8x2-1/2	16x64	1
20	508	15-5/8	413	12-1/2	318	2	50	1-1/8x4-1/2	1-1/8x115	5/8x3	16x76	1
24	610	18	470	14-3/4	375	2	50	1-1/4x4-1/2	1-1/4x115	5/8x3	16x76	1

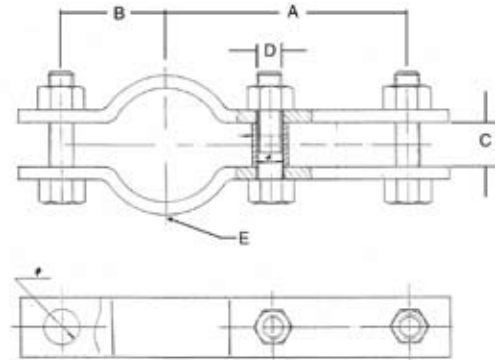




## INDUSTRIAL HANGERS & CLAMPS

### A 62 Std. 3-Bolt Pipe Clamp

Material:	Carbon Steel
Application:	Designed for suspending heavy-duty, high-temperature pipe runs with up to 4" thick insulation.
Ordering:	Specify part number, insulation thickness, and pipe size.
Approvals:	Complies with Manufacturers' Standardization Society SP-69 Type 3.



### A 62 STD 3-BOLT PIPE CLAMP

SIZE	A mm	B mm	C mm	D mm	E mm	Max mm	Max Rec Load		Box Qty
							650°F	750°F	
1/2	13	89	33	16	3/8x30	4x30	950	850	15
3/4	19	89	35	16	3/8x40	5x32	950	850	15
1	25	89	35	16	3/8x40	5x32	950	850	15
1-1/4	32	95	44	16	1/2x45	5x32	1,540	940	15
1-1/2	38	105	55	26	5/8x60	5x32	1,540	1,380	10
2	50	130	60	26	5/8x60	6x32	1,540	1,380	10
2-1/2	64	145	65	26	5/8x60	6x32	1,540	1,380	10
3	76	155	75	26	5/8x60	6x32	1,540	1,380	10
4	102	180	100	26	3/4x70	10x50	2,500	2,230	10
5	127	178	102	26	3/4x70	10x50	2,500	2,230	1
6	152	225	130	38	7/8x90	10x64	2,860	2,550	1
8	203	255	155	38	7/8x90	10x64	2,860	2,550	1
10	254	290	195	38	1x100	12x64	3,240	2,900	1
12	305	310	210	38	1x100	12x64	3,240	2,900	1
14	356	350	240	51	1-1/4x110	16x76	4,300	3,850	1
16	406	348	254	51	1-1/4x120	16x76	4,300	3,850	1
18	457	374	280	51	1-1/4x120	16x76	4,300	3,850	1
20	508	403	314	51	1-3/8x135	18x76	5,500	4,900	1
24	610	454	365	51	1-3/8x135	18x76	6,000	5,350	1



## INDUSTRIAL HANGERS & CLAMPS

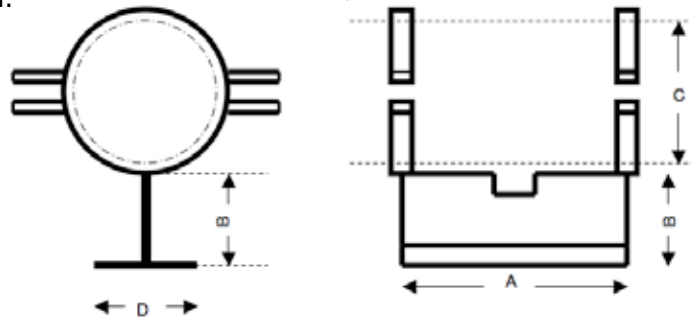
### A 900 Pipe Shoe

**Materials:** Structural steel beam, Prime coated, and A 125 2 Bolt pipe clamp.

**Finish:** Prime coated

**Application:** For the Support of piping with longitudinal movement resulting from expansion & contraction. Maximum temp. range 750°F.

**Ordering:** Specify pipe size & figure number.



### A-900 Pipe Shoe

SIZE	A		B		C		D		Box Qty	
	MM	MM	MM	MM	MM	MM	MM			
2	50	12	305	4	102	2-3/8	60.30	4	102	1
3	76	12	305	4	102	3-1/2	88.90	4	102	1
4	102	12	305	4	102	4-1/2	114.30	4	102	1
6	152	12	305	4	102	6-5/8	168.30	4	102	1
8	203	12	305	4	102	8-5/8	219.10	4	102	1
10	250	12	305	4	102	10-3/4	273.00	4	102	1



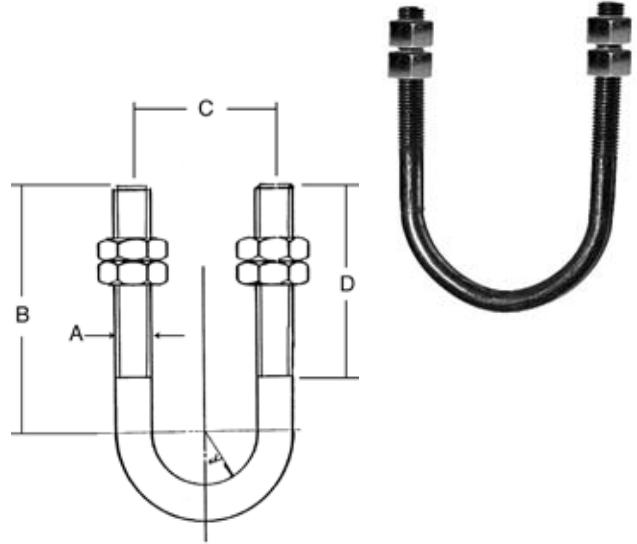
## INDUSTRIAL HANGERS & CLAMPS

### A 475 Standard U-Bolts Black

Material: Carbon Steel Wire

Application: Designed as a support, guide, or an anchor for pipe Comes complete with 4 hex nuts.

Ordering: Specify figure number and pipe size.



### A 475 STANDARD U BOLTS BLACK

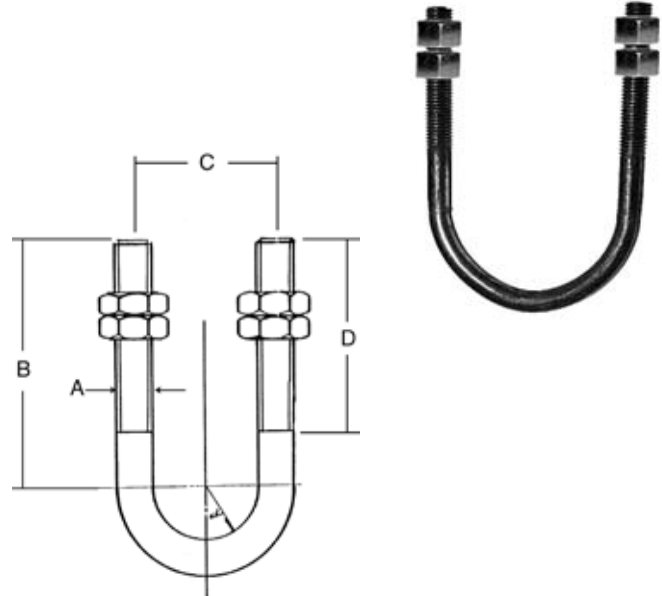
SIZE		"A"		"B"		"C"		"D"		Max Rec Load		Box Qty
	mm		mm		mm		mm		mm	650°F	750°F	
1/2	13	3/8	10	2-3/8	60	15/16	24	2	50	1,220	1,090	50
3/4	19	3/8	10	2-1/2	64	1-1/8	29	2	50	1,220	1,090	50
1	25	3/8	10	2-3/4	70	1-3/8	35	2	50	1,220	1,090	50
1-1/4	32	3/8	10	2-7/8	73	1-3/4	44	2-1/2	64	1,229	1,090	50
1-1/2	38	3/8	10	3	76	2	50	2-1/2	64	1,229	1,090	50
2	50	3/8	10	3-5/16	84	2-7/16	62	2-1/2	64	1,229	1,090	50
2-1/2	64	1/2	13	3-13/16	97	2-15/16	75	3	76	2,260	2,020	25
3	76	1/2	13	4	102	3-9/16	91	3	76	2,260	2,020	25
3-1/2	89	1/2	13	4-1/4	108	4-1/16	103	3	76	2,260	2,020	20
4	102	1/2	13	4-1/2	114	4-9/16	116	3	76	2,260	2,020	20
5	127	1/2	13	5	127	5-5/8	143	3	76	2,260	2,020	Bulk
6	152	5/8	16	6-1/16	154	6-3/4	171	3-1/2	89	3,620	3,230	Bulk
8	203	5/8	16	6-15/16	176	8-3/4	222	3-1/2	89	3,620	3,230	Bulk
10	254	3/4	19	8-3/8	213	10-7/8	276	4	102	5,420	4,830	Bulk
12	305	7/8	22	9-5/8	244	12-7/8	327	4-1/2	114	7,540	6,730	Bulk
14	356	7/8	22	10-1/4	260	14-1/8	359	5	127	7,540	6,730	Bulk
16	406	7/8	22	11-1/4	285	16-1/8	410	5	127	7,540	6,730	Bulk
18	457	1	25	13	330	18-1/8	460	5	127	9,929	8,850	Bulk
20	508	1	25	14	356	20-1/8	511	6	152	9,929	8,850	Bulk
24	610	1	25	16	406	24-1/8	613	6	152	9,929	8,850	Bulk



## INDUSTRIAL HANGERS & CLAMPS

### A 175 Standard U-Bolts Zinc Plated

Material:	Zinc Plated Carbon Steel Wire
Application:	Used as a support, guide, or anchor for pipe.
Ordering:	Specify pipe size and figure number. Comes complete with 4 hex nuts.
Approvals:	Complies with Manufacturers Standardization Society SP – 69 Type 24.



### A 175 STANDARD U-BOLTS ZINC PLATED

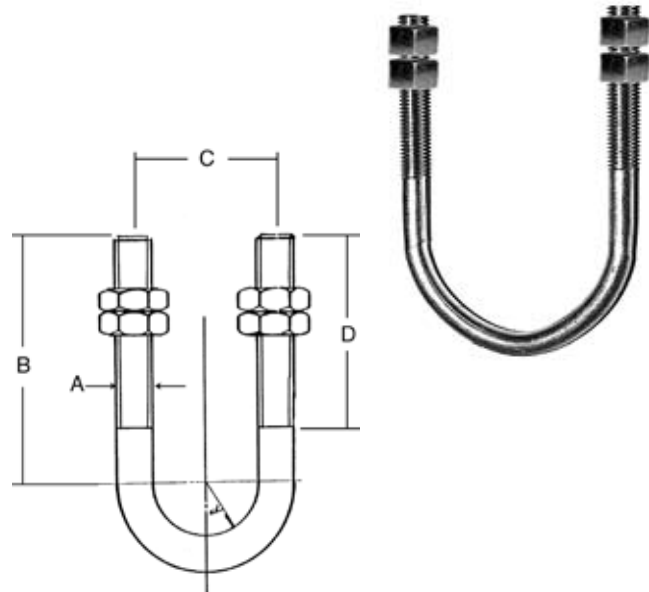
SIZE		"A"		"B"		"C"		"D"		Max Rec Load		Box Qty
	mm		mm		mm		mm		mm	650°F	750°F	
1/2	13	3/8	10	2-3/8	60	15/16	24	2	50	1,220	1,090	50
3/4	19	3/8	10	2-1/2	64	1-1/8	29	2	50	1,220	1,090	50
1	25	3/8	10	2-3/4	70	1-3/8	35	2	50	1,220	1,090	50
1-1/4	32	3/8	10	2-7/8	73	1-3/4	44	2-1/2	64	1,229	1,090	50
1-1/2	38	3/8	10	3	76	2	50	2-1/2	64	1,229	1,090	50
2	50	3/8	10	3-5/16	84	2-7/16	62	2-1/2	64	1,229	1,090	50
2-1/2	64	1/2	13	3-13/16	97	2-15/16	75	3	76	2,260	2,020	25
3	76	1/2	13	4	102	3-9/16	91	3	76	2,260	2,020	25
3-1/2	89	1/2	13	4-1/4	108	4-1/16	103	3	76	2,260	2,020	20
4	102	1/2	13	4-1/2	114	4-9/16	116	3	76	2,260	2,020	20
5	127	1/2	13	5	127	5-5/8	143	3	76	2,260	2,020	Bulk
6	152	5/8	16	6-1/16	154	6-3/4	171	3-1/2	89	3,620	3,230	Bulk
8	203	5/8	16	6-15/16	176	8-3/4	222	3-1/2	89	3,620	3,230	Bulk
10	254	3/4	19	8-3/8	213	10-7/8	276	4	102	5,420	4,830	Bulk
12	305	7/8	22	9-5/8	244	12-7/8	327	4-1/2	114	7,540	6,730	Bulk
14	356	7/8	22	10-1/4	260	14-1/8	359	5	127	7,540	6,730	Bulk
16	406	7/8	22	11-1/4	285	16-1/8	410	5	127	7,540	6,730	Bulk
18	457	1	25	13	330	18-1/8	460	5	127	9,929	8,850	Bulk
20	508	1	25	14	356	20-1/8	511	6	152	9,929	8,850	Bulk
24	610	1	25	16	406	24-1/8	613	6	152	9,929	8,850	Bulk



## INDUSTRIAL HANGERS & CLAMPS

### A 175SS U-Bolts Stainless Steel

Material:	Stainless Steel Wire
Application:	Used as a support, guide, or anchor for pipe.
Ordering:	Specify pipe size and figure number. Comes complete with 4 hex nuts.
Approvals:	Complies with Manufacturers Standardization Society SP – 69 Type 24.



### A 175SS U-BOLTS STAINLESS STEEL

SIZE		"A"		"B"		"C"		"D"		Max Rec Load		Box Qty
	mm		mm		mm		mm		mm	650°F	750°F	
1/2	13	3/8	10	2-3/8	60	15/16	24	2	50	1,220	1,090	50
3/4	19	3/8	10	2-1/2	64	1-1/8	29	2	50	1,220	1,090	50
1	25	3/8	10	2-3/4	70	1-3/8	35	2	50	1,220	1,090	50
1-1/4	32	3/8	10	2-7/8	73	1-3/4	44	2-1/2	64	1,229	1,090	50
1-1/2	38	3/8	10	3	76	2	50	2-1/2	64	1,229	1,090	50
2	50	3/8	10	3-5/16	84	2-7/16	62	2-1/2	64	1,229	1,090	50
2-1/2	64	1/2	13	3-13/16	97	2-15/16	75	3	76	2,260	2,020	25
3	76	1/2	13	4	102	3-9/16	91	3	76	2,260	2,020	25
3-1/2	89	1/2	13	4-1/4	108	4-1/16	103	3	76	2,260	2,020	20
4	102	1/2	13	4-1/2	114	4-9/16	116	3	76	2,260	2,020	20
5	127	1/2	13	5	127	5-5/8	143	3	76	2,260	2,020	Bulk
6	152	5/8	16	6-1/16	154	6-3/4	171	3-1/2	89	3,620	3,230	Bulk
8	203	5/8	16	6-15/16	176	8-3/4	222	3-1/2	89	3,620	3,230	Bulk
10	254	3/4	19	8-3/8	213	10-7/8	276	4	102	5,420	4,830	Bulk
12	305	7/8	22	9-5/8	244	12-7/8	327	4-1/2	114	7,540	6,730	Bulk
14	356	7/8	22	10-1/4	260	14-1/8	359	5	127	7,540	6,730	Bulk
16	406	7/8	22	11-1/4	285	16-1/8	410	5	127	7,540	6,730	Bulk
18	457	1	25	13	330	18-1/8	460	5	127	9,929	8,850	Bulk
20	508	1	25	14	356	20-1/8	511	6	152	9,929	8,850	Bulk
24	610	1	25	16	406	24-1/8	613	6	152	9,929	8,850	Bulk



## INDUSTRIAL HANGERS & CLAMPS

### A 333 Turnbuckle

Material:	Forged Steel
Application:	Designed as a hanger rod connection with up to 6" adjustment. One end has left hand thread while the other has right hand threads.
Ordering:	Specify figure number and rod size.
Approvals:	Complies with manufacturers' Standardization Society SP - 69 Type 13.



### A 333 TURNBUCKLE

SIZE		A		B		C		Max Rec Load		Box Qty
	mm		mm		mm		mm	650°F	750°F	
3/8	10	6	152	7-1/4	184	5/8	16	610	540	50
1/2	13	6	152	7-1/2	190	3/4	19	1,130	1,010	25
5/8	16	6	152	7-3/4	196	7/8	22	1,810	1,610	25
3/4	19	6	152	8-3/16	208	1-1/8	28	2,710	2,420	25
7/8	22	6	152	8-1/2	216	1-1/4	32	3,770	3,360	15
1	25	6	152	9	228	1-1/2	38	4,960	3,360	15
1-1/8	29	6	152	9-7/32	234	1-5/8	41	8,000	4,420	15
1-1/4	32	6	152	9-7/32	234	1-5/8	41	11,630	7,140	10
1-1/2	38	6	152	9-3/4	248	1-7/8	48	15,700	10,370	Bulk
1-3/4	44	6	152	10-3/8	264	2-7/32	56	15,700	14,000	Bulk
2	50	6	152	11	280	2-1/2	64	20,700	18,460	Bulk



## INDUSTRIAL HANGERS & CLAMPS

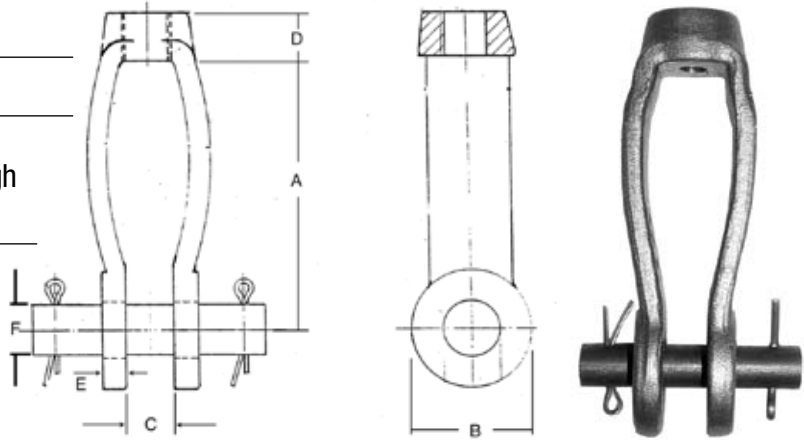
### A 339 Forged Steel Clevis

Material: Forged Steel

Application: Designed as an adjustable hanger rod connection for high temperature pipe runs.

Ordering: Specify figure number and rod size

Approvals: Complies with Manufacturers' Standardization Society SP - 69 Type 14.



### A 339 FORGED STEEL CLEVIS

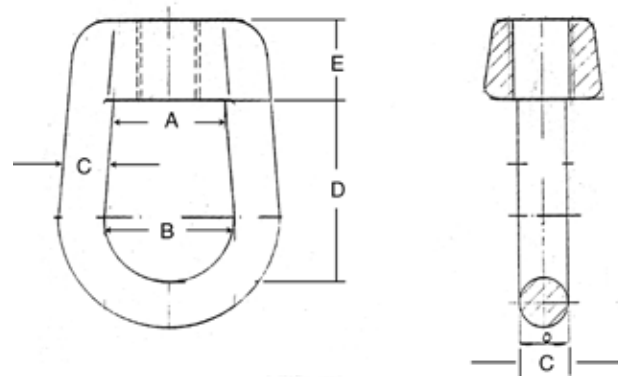
SIZE	A		B		C		D		E		F		Max Rec Load		Box Qty	
	mm	mm	mm	mm	mm	mm	mm	mm	mm	mm	mm	650°F	750°F			
3/8	10	3-5/8	92	1-9/16	40	1/2	13	5/8	16	5/16	8	1/2	12.7	610	1,540	1
1/2	13	3-5/8	92	1-9/16	40	1/2	13	5/8	16	5/16	8	5/8	15.8	1,130	1,610	1
5/8	16	3-5/8	92	1-9/16	40	5/8	16	5/8	16	5/16	8	3/4	19	1,810	1,610	1
3/4	19	5	127	2-1/2	64	3/4	19	1	25	3/8	9.5	7/8	22.2	2,710	2,420	1
7/8	22	5	127	2-1/2	64	7/8	22	1	25	3/8	9.5	1	25.4	3,770	3,360	1
1	25	5	127	3	76	1	25	1-1/4	32	1/2	13	1-1/8	28.5	4,960	4,420	1
1-1/4	32	5	127	3	76	1-1/4	32	1-1/4	32	1/2	13	1-3/8	34.9	8,000	7,140	1
1-1/2	38	6	152	3-5/8	92	1-1/2	38	1-5/8	41	1/2	13	1-5/8	41.2	11,630	10,370	1
1-3/4	44	6	152	4	102	1-3/4	44	1-3/4	44	1/2	13	1-7/8	47.6	15,700	14,000	1
2	50	7	178	5	127	1-1/2	64	2-1/4	57	5/8	16	2-1/4	57	20,700	18,460	1



## INDUSTRIAL HANGERS & CLAMPS

### A 344 Weldless Eye Nut

Material:	Forged Steel
Application:	Designed for use on high temperature pipe runs where a flexible connection is required.
Ordering:	Specify figure number and rod size.
Approvals:	Complies with manufacturers' Standardization Society SP - 69 TYPE 16.



### A 344 EYE NUT

SIZE	A		B		C		D		E		Max Rec Load		Box Qty	
	mm	mm	mm	mm	mm	mm	mm	mm	650°F	750°F				
3/8	10	1	25	1-3/8	35	1/2	13	2	50	7/8	22	730	572	1
1/2	13	1-1/8	29	1-3/8	35	1/2	13	2	50	7/8	22	1,350	1,057	1
5/8	16	1-1/8	29	1-3/8	35	1/2	13	2	50	7/8	22	2,160	1,692	1
3/4	19	1-1/8	29	1-3/8	35	1/2	13	2	50	7/8	22	3,230	2,530	1
7/8	22	1-1/2	38	1-7/8	48	3/4	19	2-5/8	67	1-1/8	29	4,480	3,508	1
1	25	1-1/2	38	1-7/8	48	3/4	19	2-5/8	67	1-1/8	29	5,900	4,620	1
1-1/8	29	1-5/8	41	2-1/4	57	1	25	3-1/4	83	1-3/8	35	9,500	7,440	1
1-1/4	32	1-5/8	41	2-1/4	57	1	25	3-1/4	83	1-3/8	35	13,800	10,807	1
1-1/2	38	1-5/8	41	2-3/8	60	1	25	3-1/2	89	1-3/8	35	18,600	14,566	1
2	50	4	102	4	102	1-1/2	38	6-1/4	159	2-1/4	57	24,600	19,265	1

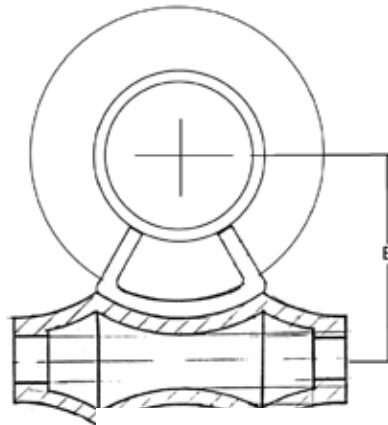




## INDUSTRIAL HANGERS & CLAMPS

### A 80/84 Pipe Protection Saddle 1" & 1-1/2"

- Material:** A-36 Carbon Steel.
- Application:** Designed to protect pipe insulation on high temperature pipe lines.
- Ordering:** Specify figure number, pipe size, and insulation thickness.
- Approvals:** Complies with manufacturers' Standardization Society SP-69 Type 39 A.



### A 80 PIPE PROTECTION SADDLE FOR 1" INSULATION

Size	Roller Size		B		
	mm	mm		mm	
3/4	19	3	76	2-1/16	52
1	25	4	102	2-5/16	59
1-1/4	32	4	102	2-1/2	64
1-1/2	38	4	102	2-5/8	67
2	50	5	127	3	76
2-1/2	64	5	127	3-1/4	83
3	76	6	152	3-1/2	89
3-1/2	89	6	152	4	102
4	102	6	152	4-1/4	108
5	127	8	203	4-13/16	122
6	152	8	203	5-3/8	137
8	203	10	254	6-9/16	167
10	254	12	305	7-13/16	198
12	305	14	356	9	229
14	356	16	406	9-11/16	246
16	406	18	457	10-3/4	273
18	457	20	508	11-13/16	300
20	508	24	610	13-1/16	332

### A 84 PIPE PROTECTION SADDLE FOR 1-1/2" INSULATION

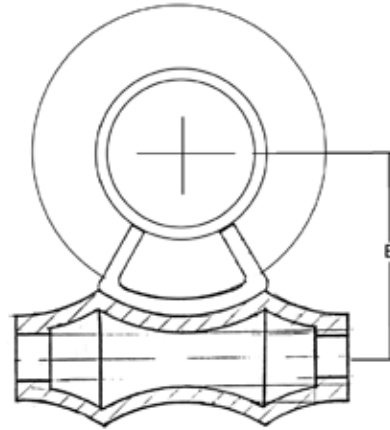
Size	Roller Size		B		
	mm	mm		mm	
3/4	19	4	102	2-3/4	70
1	25	5	127	2-7/8	73
1-1/4	32	5	127	3-1/16	78
1-1/2	38	5	127	3-1/4	83
2	50	6	152	3-1/2	89
2-1/2	64	6	152	4	102
3	76	6	152	4-5/16	110
3-1/2	89	6	152	4-9/16	116
4	102	8	203	4-7/8	124
5	127	10	254	5-1/2	140
6	152	10	254	5-7/8	149
8	203	12	305	7-1/16	179
10	254	14	356	8-5/8	211
12	305	16	406	9-1/2	241
14	356	18	457	10-3/16	259
16	406	20	508	11-1/4	286
18	457	24	610	12-5/16	313
20	508	24	610	13-9/16	344



## INDUSTRIAL HANGERS & CLAMPS

### A 88/90 Pipe Protection Saddle 2" & 2-1/2"

- Material:** A-36 Carbon Steel.
- Application:** Designed to protect pipe insulation on high temperature pipe lines.
- Ordering:** Specify figure number, pipe size, and insulation thickness.
- Approvals:** Complies with manufacturers' Standardization Society SP-69 Type 39 A.



### A 88 PIPE PROTECTION SADDLE FOR 2" INSULATION

Size	Roller Size		B		
	mm	mm		mm	
3/4	19	5	127	3-5/16	84
1	25	6	152	3-1/2	89
1-1/4	32	6	152	3-5/8	92
1-1/2	38	6	152	4	102
2	50	6	152	4-1/4	108
2-1/2	64	6	152	4-1/2	114
3	76	8	203	4-13/16	122
3-1/2	89	8	203	5-1/8	130
4	102	8	203	5-3/8	137
5	127	10	254	6	152
6	152	10	254	6-7/8	175
8	203	12	305	7-9/16	192
10	254	16	406	9-1/16	230
12	305	16	406	10-3/16	259
14	356	18	457	10-7/8	276
16	406	20	508	11-3/16	284
18	457	24	610	12-7/8	327
20	508	24	610	14-1/16	359

### A 90 PIPE PROTECTION SADDLE FOR 2-1/2" INSULATION

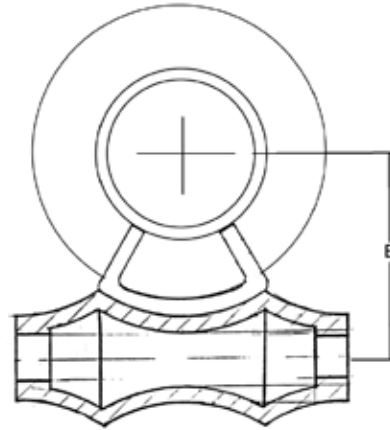
Size	Roller Size		B		
	mm	mm		mm	
2	50	8	203	4-3/4	121
2-1/2	64	8	203	5-3/8	137
3	76	8	203	5-3/8	137
3-1/2	89	8	203	5-3/8	137
4	102	10	254	6	152
5	127	12	305	6-5/8	168
6	152	12	305	7	178
8	203	14	356	8-1/4	210
10	254	16	406	9-5/8	244
12	305	18	457	10-1/2	267
14	356	20	508	11-3/8	289
16	406	24	610	12-1/4	311
18	457	24	610	13-1/2	343
20	508	24	610	14-5/8	371



## INDUSTRIAL HANGERS & CLAMPS

### A 92/95 Pipe Protection Saddle 3" & 4"

Material:	A-36 Carbon Steel.
Application:	Designed to protect pipe insulation on high temperature pipe lines.
Ordering:	Specify figure number, pipe size, and insulation thickness.
Approvals:	Complies with manufacturers' Standardization Society SP-69 Type 39 A.



### A 92 PIPE PROTECTION SADDLE FOR 3" INSULATION

Size	Roller Size		B		
	mm	mm	mm	mm	
2	50	8	203	5-3/8	137
2-1/2	64	8	203	5-5/8	143
3	76	8	203	6	152
3-1/2	89	8	203	6-5/16	160
4	102	10	254	6-9/16	167
5	127	12	305	7-1/8	181
6	152	12	305	7-5/8	194
8	203	14	356	9	229
10	254	16	406	10-1/8	257
12	305	18	457	11-1/8	283
14	356	20	508	11-3/4	298
16	406	24	610	12-7/8	327
18	457	24	610	14-3/16	360
20	508	24	610	15-7/8	403

### A 95 PIPE PROTECTION SADDLE FOR 4" INSULATION

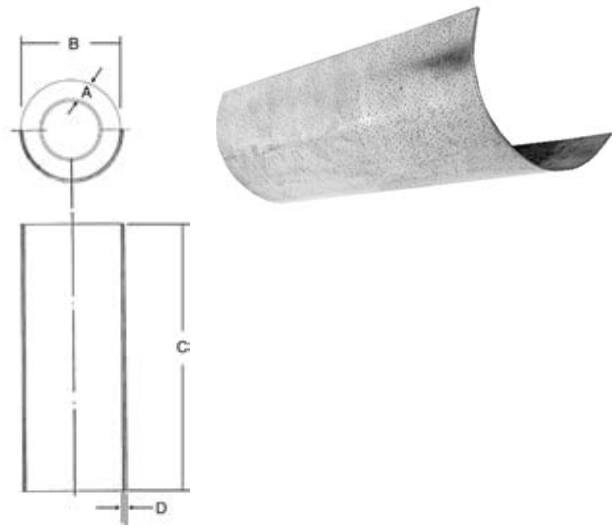
Size	Roller Size		B		
	mm	mm	mm	mm	
4	102	12	305	7-5/8	194
5	127	14	356	8-3/16	210
6	152	14	356	9	229
8	203	16	406	10-1/8	257
10	254	18	457	11-1/4	286
12	305	20	508	12-3/8	314
14	356	24	610	12-7/8	327
16	406	24	610	14-1/8	359
18	457	24	610	15-1/2	394
20	508	24	610	17	432



## INDUSTRIAL HANGERS & CLAMPS

### A 203 Insulation Protection Shield

- Material:** Pregalvanized Carbon Steel.
- Application:** Designed to protect pipe insulation when used with hangers.
- Ordering:** Specify figure number, pipe size, and insulation thickness. When ordering look at the selection table below, find the pipe size required and the insulation thickness you have to determine the shield number you will require.
- Approvals:** Complies with Manufacturers' Standardization Society SP-69 Type 40.



### A 203 INSULATION PROTECTION SHIELD – Selection Table

Pipe Size		A-Insulation Thickness				
	mm	1/2	3/4	1	1 1/2	2
1/2	13	0	1	1		
3/4	19	1	1	2	4	6
1	25	1	2	3	5	7
1-1/4	32	2	3	3	6	7
1-1/2	38	2	3	4	6	7
2	50	3	4	5	7	8
2-1/2	64	4	5	6	7	8
3	76	5	6	7	8	9
3-1/2	89	–	–	8	9	10
4	102	–	–	8	9	10
5	127	–	–	11	12	13
6	152	–	–	12	13	14
8	203	–	–	14	15	16
10	254	–	–	16	17	18
12	305	–	–	18	19	20
14	356	–	–	19	20	21

Size of Shield	B		C		D	
		mm		mm		mm
0	1-7/8	48	12	305	3/64	1.2
1	2-3/8	60	12	305	3/64	1.2
2	2-7/8	73	12	305	3/64	1.2
3	3-1/2	89	12	305	3/64	1.2
4	4	102	12	305	3/64	1.2
5	4-1/2	114	12	305	3/64	1.2
6	5	127	12	305	3/64	1.2
7	5-9/16	142	12	305	3/64	1.2
8	6-5/8	168	12	305	1/16	1.5
9	7-5/8	194	12	305	1/16	1.5
10	8-5/8	220	12	305	1/16	1.5
13	9-19/32	244	18	457	1/16	1.5
14	10-30/32	278	18	457	1/16	1.5
15	11-3/4	298	24	610	5/64	2.0
16	12-3/4	324	24	610	5/64	2.0
17	14	356	24	610	5/64	2.0
18	15	382	24	610	5/64	2.0
19	16	406	24	610	5/64	2.0
20	17	432	24	610	5/64	2.0
21	18	458	24	610	3/32	2.5





## HANGER ATTACHMENTS & STRUT PRODUCTS

Hangers attachments offered in this section are designed to suspend pipe and or threaded rod from beams, concrete and other structural surfaces by bolting or welding. Strut products offered in this section offer a wide range of different products all designed for supporting pipe.

**Materials:** Carbon steel and Pre-Galvanized steel are the standard materials used for products in this section. All products in this section are also available in 316 Stainless Steel upon request.

**Finishes:** Attachments in this section are available in several different finishes. Epoxy coated, Zinc Plated, and standard black finishes are available. Strut and strut products are supplied standard galvanized finish.

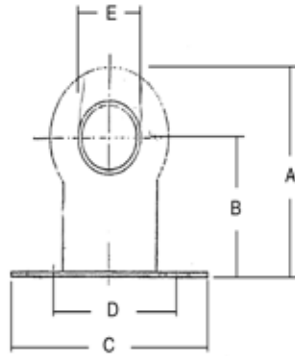
## HANGER ATTACHMENTS AND STRUT PRODUCTS

### A 240 Standard Pipe Stay

Material: Epoxy Coated Carbon Steel

Application: Designed for use with Carbon Steel pipe or Copper pipe in residential or light commercial projects.

Ordering: Specify figure number pipe size, carbon steel pipe or Copper pipe.



### A240 STANDARD PIPE STAY

Size	A		B		C		D		E		Box Qty	
	mm	mm	mm	mm	mm	mm	mm	mm	mm			
1/2Cx3/8I.P	13	2-13/64	56	1-15/32	37	2-1/2	64	1-3/4	44	11/16	18	100
3/4Cx1/2I.P	19	2-13/64	56	1-15/32	37	2-1/2	64	1-3/4	44	15/16	24	100
1Cx3/4I.P	25	2-9/16	65	1-5/8	41	3-1/4	83	2	50	1-3/16	30.5	100
1-1/4Cx1I.P	32	2-9/16	65	1-5/8	41	3-1/4	83	2	50	1-15/32	38	75
1-1/2Cx1-1/4I.P	38	3-5/8	92	2-1/2	64	4	102	3	76	1-3/4	45	50
1-1/2IP	50	4-1/4	108	2-13/16	71	4-1/2	114	3	76	2-1/8	54	50
2IP	64	4-3/8	111	2-15/16	75	5	127	3-1/2	89	2-1/2	63	40



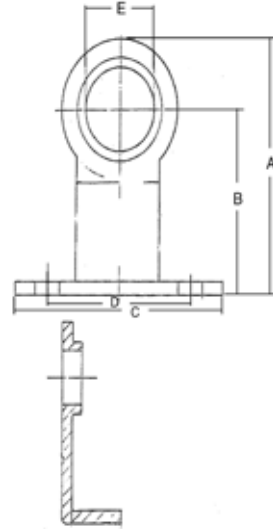
## HANGER ATTACHMENTS AND STRUT PRODUCTS

### A 245 Extended Pipe Stay

**Material:** Epoxy coated Carbon Steel

**Application:** Designed for use with Carbon Steel pipe or Copper pipe in residential or light commercial projects, where a higher elevation is required.

**Ordering:** Specify figure number pipe size, Carbon Steel pipe or Copper.



### A 245 EXTENDED PIPE STAY

Size	A		B		C		D		E		Box Qty	
	mm	mm	mm	mm	mm	mm	mm	mm	mm			
1/2Cx3/8I.P	13	3-1/4	83	2-1/2	64	2-1/2	64	1-3/4	44	1-1/16	18	100
3/4Cx1/2I.P	19	3-1/4	83	2-1/2	64	2-1/2	64	1-3/4	44	15/16	24	100
1Cx3/4I.P	25	3-3/4	95	2-3/4	70	3-1/4	83	2	50	1-3/16	30.5	75
1-1/4Cx1I.P	32	3-7/8	99	2-3/4	70	3-1/4	83	2	50	1-1/2	38	75



## HANGER ATTACHMENTS AND STRUT PRODUCTS

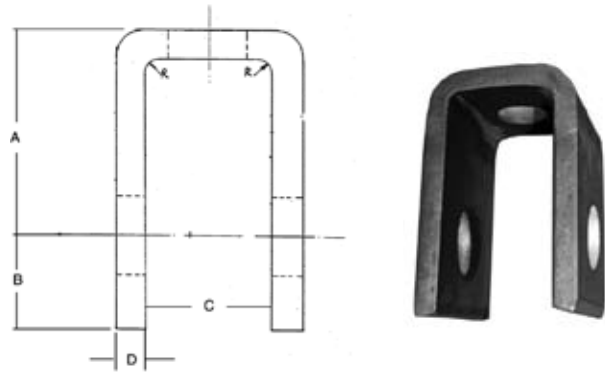
### A 330 Heavy Duty Beam Attachment – Less Bolt

Material: Carbon Steel

Application: Designed for attaching hanger rod to the bottom of structural steel where heavy loads and large hanger rod sizes are required. Can be welded in place in either upright or inverted position.

Ordering: Specify figure number, rod size.

Approvals: Complies with Manufacturers' Standardization Society SP - 69 Type 22.



### A 330 HEAVY DUTY BEAM ATTACHMENT

Size		A		B		C		D		Box Qty
	mm		mm		mm		mm		mm	
3/8	10	2-1/8	54	7/8	22	1-5/8	41	1/4x2	6x50	20
1/2	13	2-1/8	54	7/8	22	1-5/8	41	1/4x2	6x50	20
5/8	16	2-1/8	54	7/8	22	1-11/16	43	1/4x2	6x50	20
3/4	19	2-3/8	60	1-1/8	28	1-11/16	43	3/8x2-1/2	10x64	15
7/8	22	3-1/8	79	1-1/4	32	2	51	3/8x2-1/2	10x64	10
1	25	3-1/4	83	1-1/2	38	2	51	1/2x3	12x76	10
1-1/8	29	3-1/2	89	1-1/2	38	2-3/8	60	1/2x3	12x76	1
1-1/4	32	3-1/2	89	2	50	2-1/2	64	5/8x4	16x102	1
1-1/2	38	4	102	2-1/2	64	3	76	3/4x4	18x102	1
1-3/4	44	5	127	2-3/4	70	3-3/4	95	3/4x5	18x127	1
2	50	5	127	3-1/4	83	3-3/4	95	3/4x6	18x152	1
2-1/4	57	6	152	3-1/2	89	4-1/4	108	3/4x6	18x152	1
2-1/2	64	6	152	3-3/4	95	4-1/2	114	3/4x6	18x152	1





## HANGER ATTACHMENTS AND STRUT PRODUCTS

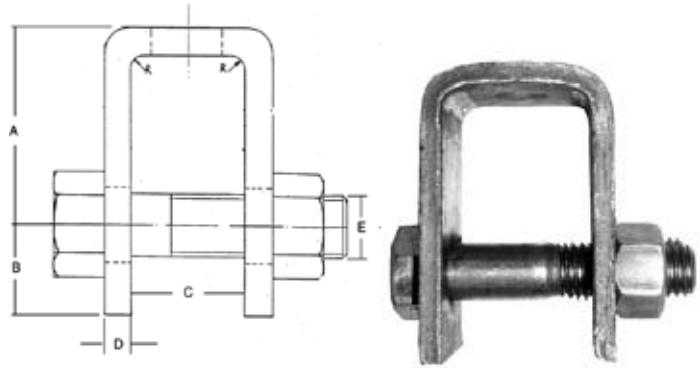
### A 330-B Heavy Duty Beam Attachment with Bolt

Material: Carbon Steel

Application: Designed for attaching hanger rod to the bottom of structural steel where heavy loads and large hanger rod sizes are required. Can be welded in place in either upright or inverted position.

Ordering: Specify figure number and rod size

Approvals: Complies with Manufacturers' Standardization Society SP - 69 Type 22.



### A 330B HEAVY DUTY BEAM ATTACHMENT

Size	A		B		C		D		E		Box Qty	
	mm	mm	mm	mm	mm	mm	mm	mm	mm			
3/8	10	2-1/8	54	7/8	22	1-5/8	41	1/4x2	6x50	1/2x3	13x76	20
1/2	13	2-1/8	54	7/8	22	1-5/8	41	1/4x2	6x50	1/2x3	16x76	20
5/8	16	2-1/8	54	7/8	22	1-11/16	43	1/4x2	6x50	3/4x3	19x76	20
3/4	19	2-3/8	60	1-1/8	28	1-11/16	43	3/8x2-1/2	10x64	7/8x3-1/2	22x89	15
7/8	22	3-1/8	79	1-1/4	32	2	51	3/8x2-1/2	10x64	1x4	25x102	10
1	25	3-1/4	83	1-1/2	38	2	51	1/2x3	12x76	1-1/8x4-3/4	28x120	10
1-1/8	29	3-1/2	89	1-1/2	38	2-3/8	60	1/2x3	12x76	1-1/4x4-3/4	32x120	1
1-1/4	32	3-1/2	89	2	50	2-1/2	64	5/8x4	16x102	1-1/2x6	38x152	1
1-1/2	38	4	102	2-1/2	64	3	76	3/4x4	18x102	1-3/4x7-1/8	44x180	1
1-3/4	44	5	127	2-3/4	70	3-3/4	95	3/4x5	18x127	2x8-5/8	50x220	1
2	50	5	127	3-1/4	83	3-3/4	95	3/4x6	18x152	2-1/4x8-5/8	57x220	1
2-1/4	57	6	152	3-1/2	89	4-1/4	108	3/4x6	18x152	2-1/2x9-1/8	64x230	1
2-1/2	64	6	152	3-3/4	95	4-1/2	114	3/4x6	18x152	2-3/4x9-1/2	70x240	1



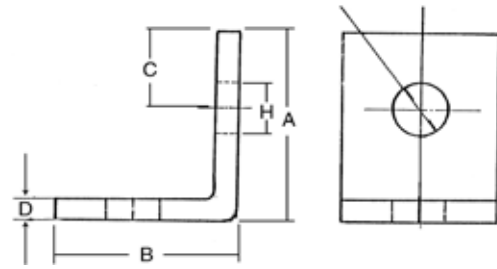
## HANGER ATTACHMENTS AND STRUT PRODUCTS

### A 350 Side Beam Bracket

Material: Carbon Steel Zinc Plated

Application: Designed for attaching a hanger rod to the side of beams or walls.

Ordering: Specify figure number and Rod size.



### A 350 SIDE BEAM CLAMP

Rod Size	Hole Size "H"		"A"		"B"		"C"		"D"		Max Rec Load		Box Qty	
	mm	mm	mm	mm	mm	mm	mm	mm	mm	w/Lag Screw	w/Bolt to Steel			
3/8	10	7/16	11	2	51	1-7/8	47	1/2	13	1/4x1-5/8	6x41	650	1,150	50
1/2	13	9/16	14	2	51	1-7/8	47	13/16	21	1/4x1-5/8	6x41	650	1,150	50
5/8	16	11/16	17.5	3	76	3	76	1	26	3/8x2	10x50	850	2,000	1
3/4	19	13/16	21	3-1/2	89	3-7/16	87	1-1/4	32	3/8x2	10x50	900	2,200	1
7/8	22	15/16	24	3-1/2	89	3-1/2	89	1-1/4	32	1/2x2	12x50	950	2,400	



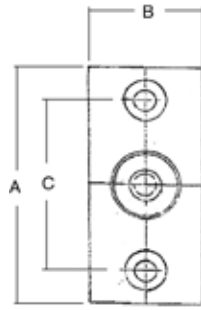
## HANGER ATTACHMENTS AND STRUT PRODUCTS

### A 22Z Zinc Plated Ceiling Flange

**Material:** Zinc Plated Malleable Iron.

**Application:** Designed for attaching to a wooden beam or structure where a hanger rod or threaded rod can be connected to support a pipe hanger.

**Ordering:** Specify figure number and rod size required.



### A 22Z CEILING FLANGE ZINC PLATED

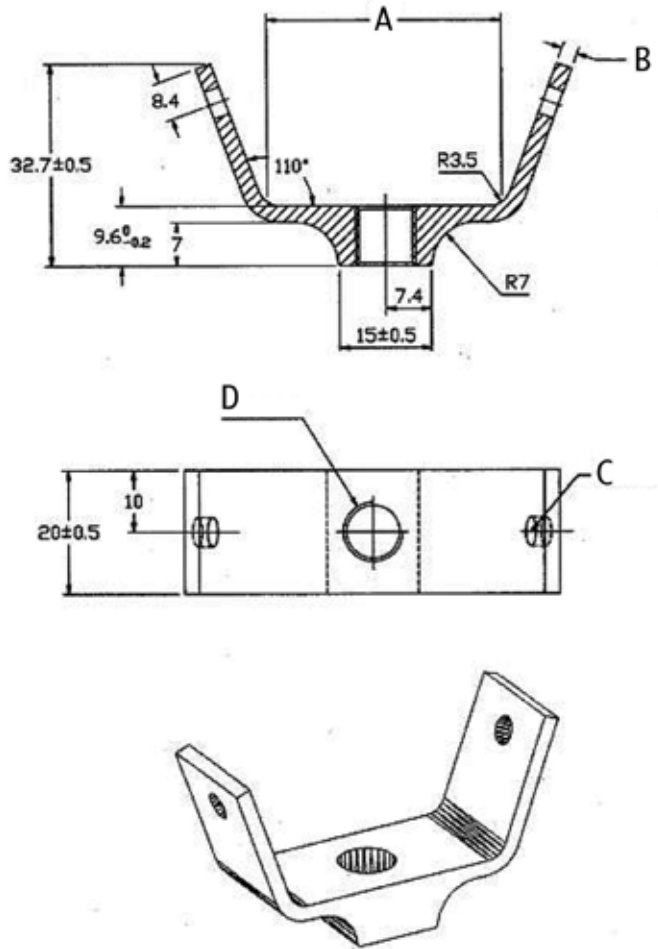
SIZE		"A"		"B"		"C"		Max Rec Load	Box Qty
	mm		mm		mm		mm		
3/8	10	2-3/4	70	1-1/4	32	2	50	180	100
1/2	13	2-3/4	70	1-1/4	32	2	50	180	100



## HANGER ATTACHMENTS AND STRUT PRODUCTS

### U935 Q-Deck Hanger

Material: Extruded Aluminum



### U935 Q-DECK HANGER

"A"		"B"		"C"		"D"		Box Qty
mm		mm		mm		mm		
40		2.6		47		3/8		100

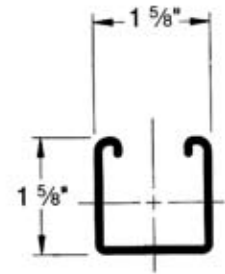
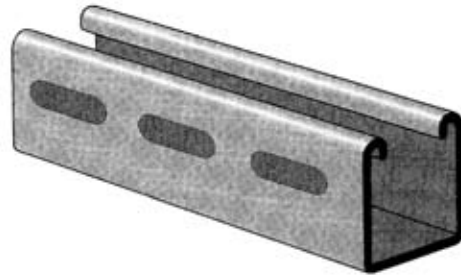


## HANGER ATTACHMENTS AND STRUT PRODUCTS

### A U927 Strut Channel (1-5/8" x 1-5/8" x 10")

Material: Channels are accurately and carefully cold formed to size from low-carbon strip steel.

Steel: Pre-Galvanized 12 Ga.



## HANGER ATTACHMENTS AND STRUT PRODUCTS

### A U929 Spring Nut with spring

Spring Nuts unless noted otherwise, are punch-press made from hot rolled, pickled and oiled steel plates, strip or coil, and conform to ASTM specifications A575, A576, A635 or A36.



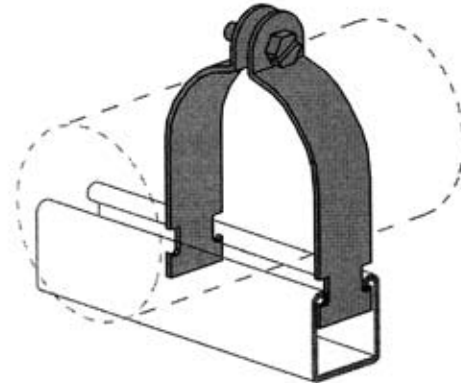
<b>A U929 Spring Nut with Spring</b>			
<i>Size &amp; Thread</i>	<i>Weight</i>		<i>Box Qty</i>
	<i>Lbs</i>	<i>Kg.</i>	
1/4"-20	7	3.2	300
3/8"-16	10	4.5	300
1/2"-13	12	5.4	300
5/8"-11	21	9.5	200
3/4"-10	21	9.5	200



## HANGER ATTACHMENTS AND STRUT PRODUCTS

### A U931 Strut Clamp

Fittings unless noted otherwise, are punch-press made from hot rolled, pickled and oiled steel plates, strip or coil, and conform to ASTM specifications A575, A576, A635 or A36.



### A U931 STRUT CLAMP for PIPE

Pipe Size	O.D. Size		Material		Weight/C		Design Load		Box Qty
		mm	Gage	mm	Lbs.	kg	Lbs.	kN	
3/8	.675	17.1	16	1.5	10	4.5	400	1.8	100
1/2	.840	21.3	16	1.5	11	5.0	400	1.8	100
3/4	1.050	26.7	14	1.9	15	6.8	600	2.7	100
1	1.315	33.4	14	1.9	17	7.7	600	2.7	100
1-1/4	1.660	42.2	14	1.9	19	8.6	600	2.7	100
1-1/2	1.900	48.3	12	2.7	29	13.2	800	3.6	100
2	2.375	60.3	12	2.7	34	15.4	800	3.6	100
2-1/2	2.875	73.0	12	2.7	40	18.1	800	3.6	100
3	3.500	88.9	12	2.7	47	21.3	800	3.6	100
3-1/2	4.000	101.6	11	3.0	62	28.1	1000	4.4	100
4	4.500	114.3	11	3.0	67	30.4	1000	4.4	100
5	5.563	141.3	11	3.0	80	36.3	1000	4.4	50
6	6.625	168.3	10	3.4	102	46.3	1000	4.4	1
8	8.625	219.1	10	3.4	130	59.0	1000	4.4	1





## THREADED PRODUCTS

Threaded products offered in this section are designed to reduce installation time.  
A wide range of types and sizes are available for various applications.

---

**Material:** For maximum loading designs carbon steel is used in the manufacturing of standard threaded rod products. 316 Stainless Steel is used for Stainless Steel Rod.

---

**Finishes:** The standard finishes for mechanical supports are plain steel (oil coated) sometimes referred to as black. Electro Galvanized Zinc ( ASTM A123 ) are all available from stock. 316 Stainless steel is also available from stock.



## THREADED PRODUCTS

### A 926 All Threaded Rod Zinc Plated

**Material:** A 1008 - 1018 Carbon Steel. Zinc Plated. Threads to ASME B.1.1 Coarse Thread (UNC) with 60° profile.

**Application:** Designed for use in pipe hanger assemblies or supporting standard pipe hangers to a structure.

**Ordering:** Specify figure number and finish.



### A 925 ALL THREADED ROD - ZINC PLATED

Rod Size		Colour Code	Threads per inch	10' Lengths Weight		12' Lengths Weight		3' Lengths Weight		Box Qty
	mm			Per Length		Per Length		Per Length		
1/4	6	White	20	1.9	0.88	2.3	1.06	0.6	0.27	500
3/8	10	Black	16	2.9	1.33	3.5	1.59	0.9	0.40	300
1/2	13	Yellow	13	5.9	2.34	6.2	2.83	1.6	0.71	200
5/8	16	Brown	11	8.1	3.68	9.7	4.42	2.4	1.11	100
3/4	19	Green	10	11.7	5.30	14	6.36	3.5	1.59	100
7/8	22	Orange	9	15.8	7.20	19	8.64	4.8	2.16	60
1	25	Light Blue	8	20.7	9.42	25	11.3	6.2	2.83	60



## THREADED PRODUCTS

### A 925SS All Threaded Rod Stainless Steel

Material: Stainless Steel.

Application: Designed for use in pipe hanger assemblies or supporting standard pipe hangers to a structure.

Ordering: Specify figure number and finish.



### A 925SS ALL THREADED ROD - STAINLESS STEEL

Rod Size		Colour Code	Threads per inch	10' Lengths Weight		12' Lengths Weight		3' Lengths Weight		Box Qty
	mm			Per Length		Per Length		Per Length		
1/4	6	White	20	1.9	0.88	2.3	1.06	0.6	0.27	500
3/8	10	Black	16	2.9	1.33	3.5	1.59	0.9	0.40	300
1/2	13	Yellow	3	5.9	2.34	6.2	2.83	1.6	0.71	200
5/8	16	Brown	11	8.1	3.68	9.7	4.42	2.4	1.11	100
3/4	10	Green	10	11.7	5.30	14	6.36	3.5	1.59	100
7/8	22	Orange	9	15.8	7.20	19	8.64	4.8	2.16	60
1	25	Light Blue	8	20.7	9.42	25	11.3	6.2	2.83	60



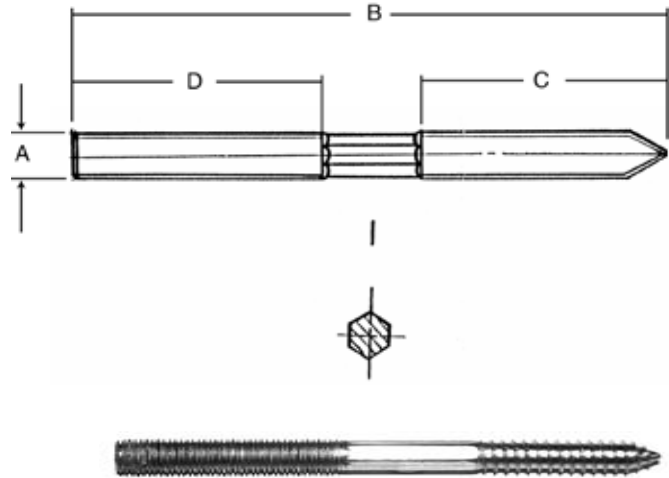
## THREADED PRODUCTS

### A 425 Coach Screw Rod

Material: Carbon Steel Wire Zinc Plated

Application: Coach screw rods are used to support a hanger from a wooden joist. Coach screw rods have a lag thread on one end and a machine thread on the other end.

Ordering: Specify figure number and rod size required.



### A 425 COACH SCREW RODS

SIZE		"A"		"B"		"C"		"D"		Box Qty
	mm		mm		mm		mm		mm	
3/8x4	10x102	3/8	10	4	102	1-7/8	48	1-1/2	38	100
3/8x6	10x152	3/8	10	6	152	1-7/8	48	2-1/2	64	100
3/8x8	10x203	3/8	10	8	203	1-7/8	48	2-1/2	64	100
3/8x10	10x254	3/8	10	10	254	1-7/8	48	2-1/2	64	100
3/8x12	10x305	3/8	10	12	305	1-7/8	48	2-1/2	64	100
1/2x6	13x152	1/2	13	6	152	1-7/8	48	2-1/2	64	100
1/2x8	13x203	1/2	13	8	203	1-7/8	48	2-1/2	64	100



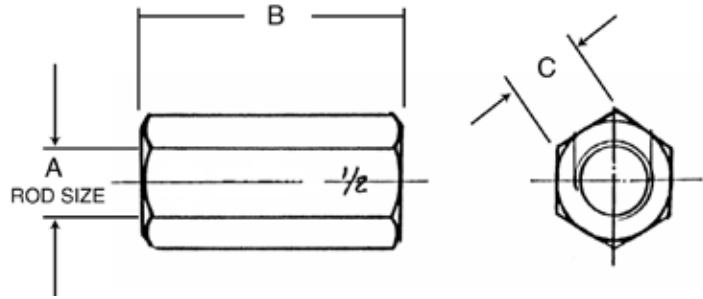
## THREADED PRODUCTS

### A 450 Steel Rod Couplings

Material: Zinc Plated Carbon Steel.

Application: Rod couplings are used to join two pieces of threaded rod together in order to support a pipe hanger holding pipe.

Ordering: Specify figure number and rod size required.



### A 450 STEEL ROD COUPLINGS

SIZE		"A"		"B"		"C"		Box Qty
	mm		mm		mm		mm	
1/4	6	1/4	6	7/8	22	5/16	8	200
3/8	10	3/8	10	1-3/4	44	5/16	8	200
1/2	13	1/2	13	1-3/4	44	3/8	10	100
5/8	16	5/8	16	2	50	1/2	13	100
3/4	19	3/4	19	2-1/4	57	9/16	14	Bulk
7/8	22	7/8	22	2-1/2	64	-	-	Bulk
1	25	1	25	2-1/2	64	-	-	Bulk
1-1/4	32	1-1/4	32	3	76	-	-	Bulk
1-1/2	38	1-1/2	38	3	76	-	-	Bulk



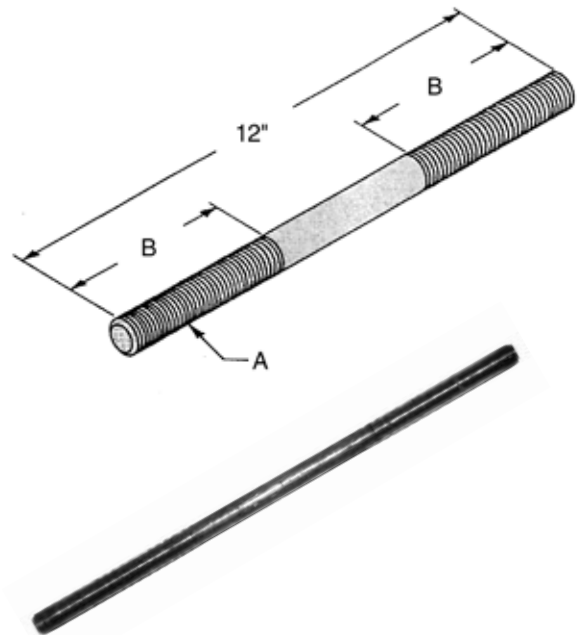
## THREADED PRODUCTS

### A W921 Machine Thread Rods Left and Right Threads

**Material:** A-1008-1018 Steel Wire.

**Application:** Designed for use in Pipe hanger assemblies. It can also be used with the A 333 turnbuckle. Rod has left hand threads on one end and right hand threads on the other end.

**Ordering:** Specify part number and rod size.



### AW 921 THREADED ROD LEFT & RIGHT THREADS

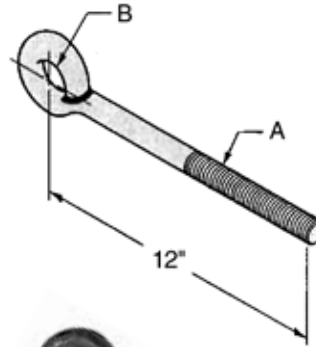
A		B	
Thread Size	mm		mm
3/8	9.5	2-1/2	64
1/2	13	2-1/2	64
5/8	16	2-1/2	64
3/4	19	3	76
7/8	20	3-1/2	89
1	25	4	102
1-1/8	28	4-1/2	114
1-1/4	32	5	127
1-1/2	38	6	152
1-3/4	44	7	178
2	50	8	203
2-1/4	57	9	229
2-1/2	64	10	254
2-3/4	70	11	279
3	76	12	305
3-1/4	83	13	330
3-1/2	89	14	356
3-3/4	95	15	381



## THREADED PRODUCTS

### A W922 Welded Eye Rod Right Hand Thread

Material:	A-1008-1018 Steel Wire.
Application:	Designed for use in hanger supports to eliminate possible bending of threaded rod.
Ordering:	Specify part number and rod size.



### AW 922 WELDED EYE ROD RIGHT HAND THREAD

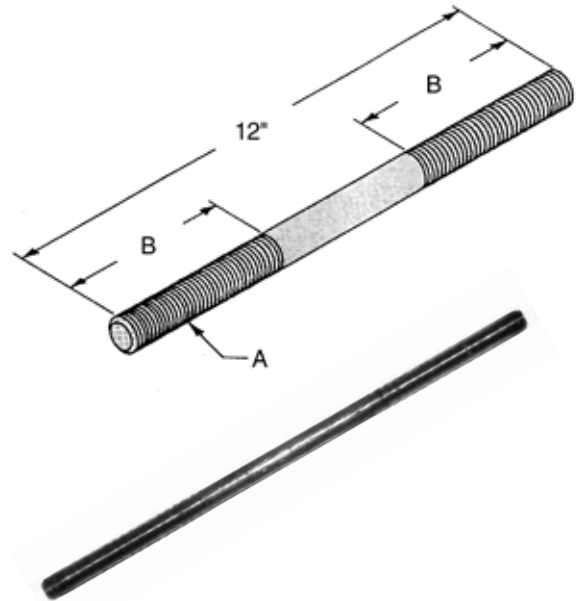
A		B	
Treaded Size	mm	Eye I.D.	mm
3/8	9.5	1/2	13
1/2	13	5/8	16
5/8	16	3/4	19
3/4	19	7/8	20
7/8	20	1	25
1	25	1-1/8	28
1-1/8	28	1-1/4	32
1-1/4	32	1-1/2	38
1-1/2	38	1-3/4	44
1-3/4	44	2	50
2	50	2-1/4	57



## THREADED PRODUCTS

### A W923 Hanger Rod Right Hand Thread

Material:	A-1008-1018 Steel Wire.
Application:	Designed for use in pipe hanger assemblies.
Ordering:	Specify part number and rod size.



### AW 923 THREADED ROD RIGHT HAND THREADS

A		B	
Thread Size	mm		mm
3/8	9.5	2-1/2	64
1/2	13	2-1/2	64
5/8	16	2-1/2	64
3/4	19	3	76
7/8	20	3-1/2	89
1	25	4	102
1-1/8	28	4-1/2	114
1-1/4	32	5	127
1-1/2	38	6	152
1-3/4	44	7	178
2	50	8	203
2-1/4	57	9	229
2-1/2	64	10	254
2-3/4	70	11	279
3	76	12	305
3-1/4	83	13	330
3-1/2	89	14	356
3-3/4	95	15	381



## THREADED PRODUCTS

### A 01/02 Swivel Nuts

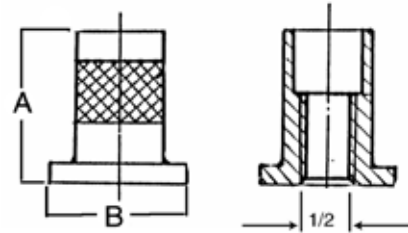
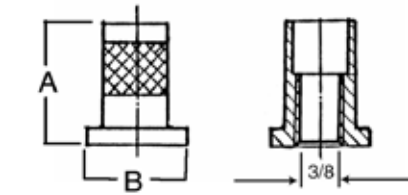
**Material:** Zinc Plated Carbon Steel.

**Application:** Nut used for A 100 swivel Ring Hanger which allows for vertical adjustment.

**Ordering:** Specify figure number and rod size.  
A 01 for 3/8" A 02 for 1/2" rod.



A 01



A 02

### A 01/02 SWIVEL NUTS

FIG#	SIZE		A		B		Box Qty
		mm		mm		mm	
A-01	3/8	10	7/8	22	11/16	17.5	Bulk
A-02	1/2	13	1-1/8	28	1	25	Bulk





## THREADED PRODUCTS

### A 05 Wood Drive Screws

Material:	Zinc plated carbon steel.
Application:	For fastening light load attachments to wood beams.
Ordering:	Specify figure number and screw size #2



### A 05 WOOD DRIVE SCREW

Size	Length		Wgt/100		Box Qty
		mm		kg	
16	2	50	2.2	1	2000

