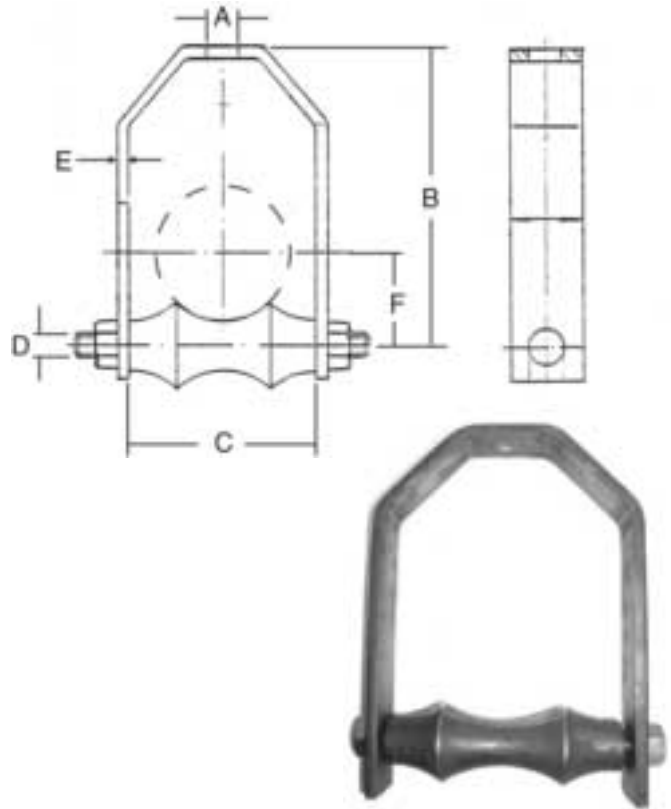


## INDUSTRIAL HANGERS & CLAMPS

### A 466 Standard Roller Hanger

- Material:** Carbon Steel body, cast iron roller.
- Application:** Designed for suspending pipe where longitudinal movement and vertical adjustment is required. When this hanger is used with insulation a pipe protection saddle must be used.
- Ordering:** Specify figure number and pipe size. **When insulation is being used take diameter of pipe, plus two times the insulation thickness to arrive at actual size required.**
- Approvals:** Complies with Manufacturers' Standardization Society SP - 69 Type 43.



### A 466 STANDARD ROLLER HANGER

SIZE	A		B		C		D		E		F		Max Rec Load	Box Qty	
	mm	mm	mm	mm	mm	mm	mm	mm	mm	mm					
1-1/2	38	1/2	13	5-1/4	133	3	77	3/8	10	3/16x1-1/4	5x32	1-3/8	34	250	1
2	50	1/2	13	5-1/4	133	3-1/4	82	1/2	13	3/16x1-1/4	5x32	1-5/8	41	280	1
2-1/2	64	1/2	13	5-1/4	146	3-1/4	82	1/2	13	3/16x1-1/4	5x32	1-7/8	47	225	1
3	76	1/2	13	5-3/4	162	3-7/8	98	1/2	13	5/16x1-1/4	5x32	2-1/8	53	310	1
3-1/2	89	5/8	16	7-1/4	178	4-15/16	122	5/8	16	1/4x1/2	6x38	2-9/16	64	390	1
4	102	5/8	16	7-1/4	192	4-15/16	125	5/8	16	1/4x1/2	6x38	2-13/16	70	475	1
5	127	5/8	16	9-3/16	232	6	152	5/8	16	1/4x2	10x45	3-7/16	87	600	1
6	152	3/4	19	11	232	7	181	3/4	19	1/4x2	10x50	4	102	780	1
8	203	7/8	22	12-5/8	322	9	235	7/8	22	3/8x2-1/2	10x63	5-1/8	130	780	1
10	254	7/8	22	14-7/8	382	11-9/64	285	7/8	22	1/2x2	10x63	6-3/8	162	965	1
12	305	7/8	22	17-1/2	443	13	336	7/8	22	1/2x2	12x63	7-7/16	189	1,200	1
14	356	1	25	19-3/4	479	14-1/2	368	1-1/8	29	1/2x2-1/2	12x63	8-3/8	213	1,200	1
16	406	1	25	20-1/2	528	16-1/2	419	1-1/4	32	1/2x3	12x63	9-3/8	238	1,200	1
18	457	1	25	23	580	18-1/2	466	1-1/4	32	1/2x3	12x76	10-1/2	267	1,400	1
20	508	1-1/4	32	25-3/8	660	20-3/4	525	1-3/8	35	5/8x3	16x76	11-5/8	295	1,600	1
24	610	1-1/2	38	29-1/2	740	24-13/16	635	1-1/2	38	5/8x4	16x102	13-7/8	352	1,800	1

