

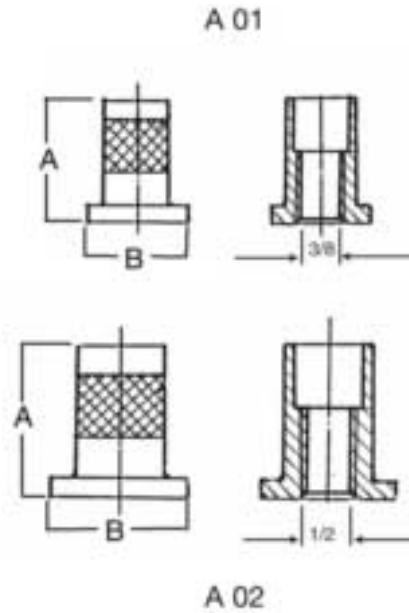
## THREADED PRODUCTS

### A 01/02 Swivel Nuts

**Material:** Zinc Plated Carbon Steel.

**Application:** Nut used for A 100 swivel Ring Hanger which allows for vertical adjustment.

**Ordering:** Specify figure number and rod size.  
A 01 for 3/8" A 02 for 1/2" rod.



### A 01/02 SWIVEL NUTS

FIG#	SIZE		A		B		Box Qty
		mm		mm		mm	
A-01	3/8	10	7/8	22	11/16	17.5	Bulk
A-02	1/2	13	1-1/8	28	1	25	Bulk

