

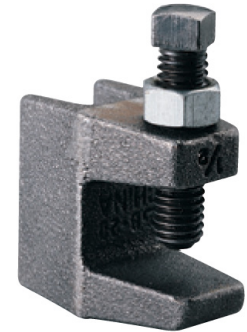
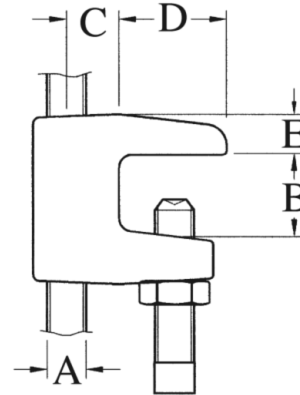
FIRE PROTECTION & WATERWORKS HANGERS

A 3034 Top Beam Clamp - Standard

Material: Malleable iron casting with a hardened steel set screw

Application: Designed for attaching a hanger rod to the top or bottom flange of a bar joist or other structural shapes where the thickness of the flange does not exceed 5/8".

Ordering: Specify figure number and rod size.



* cUL approved 3/8" rod - 1/2" thru 4" pipe size and 1/2" rod - 5" thru 8" pipe size only
 * FM approved 3/8" rod - 3/4" thru 4" pipe size only

A 3034 TOP BEAM CLAMP - STANDARD

"A"		"B"		"C"		"D"		"E"		Max Rec Loads	Box Qty
in	mm	in	mm	in	mm	in	mm	in	mm		
3/8	10	3/4	25	1/2	12.5	1	25.4	3/8	9.5	500	75
1/2	13	3/4	25	1/2	12.5	1	25.4	3/8	9.5	500	75
5/8	16	1	25	2-3/16	55	1-13/16	46	3/8	10	600	50
3/4	19	1-1/8	28	2-5/16	58	1-13/16	46	1/2	13	800	25

Approvals: Underwriters' Laboratory Listed and FM Approved products are manufactured by Jinan Meide. Conforms with Manufacturers Standardization Society ANSI/MSS-SP-58 (Type 19 & 23), Install in accordance with ANSI/MSS-SP-69. Exceeds requirements of NFPA-13.

