

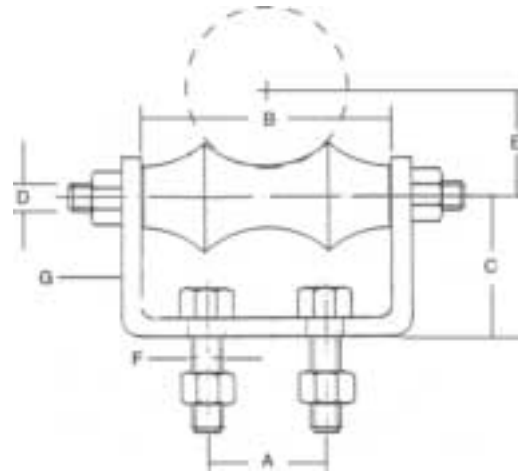
INDUSTRIAL HANGERS & CLAMPS

A 469 Standard Roller Chair

Material: Carbon Steel body, cast iron roller.

Application: Designed for supporting pipe with longitudinal movement. When this hanger is used with insulation a pipe protection saddle must be used.

Ordering: Specify figure number and pipe size. **When insulation is being used take diameter of pipe, plus two times the insulation thickness to arrive at actual size required.**



A 469 STANDARD ROLLER CHAIR

| SIZE | A | | B | | C | | D | | E | | F | | G | | Max Rec Load | Box Qty | |
|-------|-----|--------|-----|--------|-----|-------|-----|-------|----|---------|-----|-----------|-------|-----------|--------------|---------|---|
| | mm | mm | mm | mm | mm | mm | mm | mm | mm | mm | mm | mm | mm | | | | |
| 1-1/2 | 38 | 1-1/2 | 38 | 3 | 76 | 1-1/2 | 38 | 3/8 | 10 | 1-3/8 | 34 | 3/8x1-1/2 | 10x38 | 1/4x1-1/4 | 6x32 | 390 | 1 |
| 2 | 50 | 1-1/2 | 38 | 3 | 82 | 1-3/4 | 44 | 1/2 | 13 | 1-5/8 | 40 | 3/8x1-1/2 | 10x38 | 1/4x1-1/4 | 6x32 | 390 | 1 |
| 2-1/2 | 64 | 1-1/2 | 38 | 3 | 82 | 1-3/4 | 44 | 1/2 | 13 | 1-7/8 | 47 | 3/8x1-1/2 | 10x38 | 1/4x1-1/4 | 6x32 | 390 | 1 |
| 3 | 76 | 2 | 50 | 3-7/8 | 99 | 1-3/4 | 44 | 1/2 | 13 | 2-1/8 | 53 | 3/8x1-1/2 | 10x38 | 1/4x1-1/4 | 6x32 | 390 | 1 |
| 3-1/2 | 89 | 2-1/2 | 64 | 4-7/8 | 126 | 2-1/2 | 64 | 5/8 | 16 | 2-9/16 | 64 | 1/2x1-1/2 | 13x38 | 3/8x1-1/2 | 10x38 | 390 | 1 |
| 4 | 102 | 2-1/2 | 64 | 4-7/8 | 126 | 2-1/2 | 64 | 5/8 | 16 | 2-13/16 | 70 | 1/2x1-1/2 | 13x38 | 3/8x1-1/2 | 10x38 | 950 | 1 |
| 5 | 127 | 3 | 76 | 6 | 152 | 2-1/2 | 64 | 5/8 | 16 | 3-7/16 | 87 | 1/2x1-1/2 | 13x38 | 3/8x1-1/2 | 10x38 | 950 | 1 |
| 6 | 152 | 3 | 76 | 7 | 178 | 2-3/4 | 70 | 3/4 | 19 | 4 | 102 | 1/2x1-1/2 | 13x38 | 3/8x2 | 10x50 | 950 | 1 |
| 8 | 203 | 3-1/2 | 88 | 9 | 229 | 3-3/4 | 95 | 7/8 | 22 | 5-1/8 | 130 | 5/8x1-1/2 | 16x38 | 3/8x2 | 10x50 | 2,100 | 1 |
| 10 | 254 | 5-1/4 | 133 | 11-1/8 | 283 | 4-1/8 | 105 | 7/8 | 22 | 6-3/8 | 162 | 5/8x2 | 16x50 | 1/2x2 | 12x50 | 2,100 | 1 |
| 12 | 305 | 5-1/2 | 140 | 13 | 330 | 4-3/8 | 111 | 7/8 | 22 | 7-7/16 | 189 | 5/8x2 | 16x50 | 1/2x2 | 12x50 | 2,400 | 1 |
| 14 | 356 | 6-1/2 | 165 | 14-1/2 | 368 | 5-1/4 | 133 | 1-1/8 | 28 | 8-3/8 | 213 | 3/4x2 | 19x50 | 1/2x2-1/2 | 12x64 | 3,130 | 1 |
| 16 | 406 | 8-1/4 | 210 | 16-1/2 | 419 | 5-5/8 | 143 | 1-1/4 | 32 | 9-3/8 | 238 | 3/4x2-1/2 | 19x64 | 1/2x3 | 12x76 | 3,970 | 1 |
| 18 | 457 | 9-1/4 | 235 | 18-1/2 | 470 | 6-3/4 | 171 | 1-1/4 | 32 | 10-1/2 | 267 | 3/4x2-1/2 | 19x64 | 1/2x3 | 12x76 | 4,200 | 1 |
| 20 | 508 | 10-1/4 | 260 | 20-3/4 | 552 | 7 | 178 | 1-3/8 | 34 | 11-5/8 | 295 | 3/4x2-1/2 | 19x64 | 1/2x3 | 12x76 | 4,550 | 1 |
| 24 | 610 | 12-1/4 | 310 | 24-3/4 | 629 | 7-7/8 | 200 | 1-1/2 | 38 | 13-7/8 | 352 | 7/8x3 | 22x76 | 5/8x4 | 16x102 | 6,160 | 1 |

