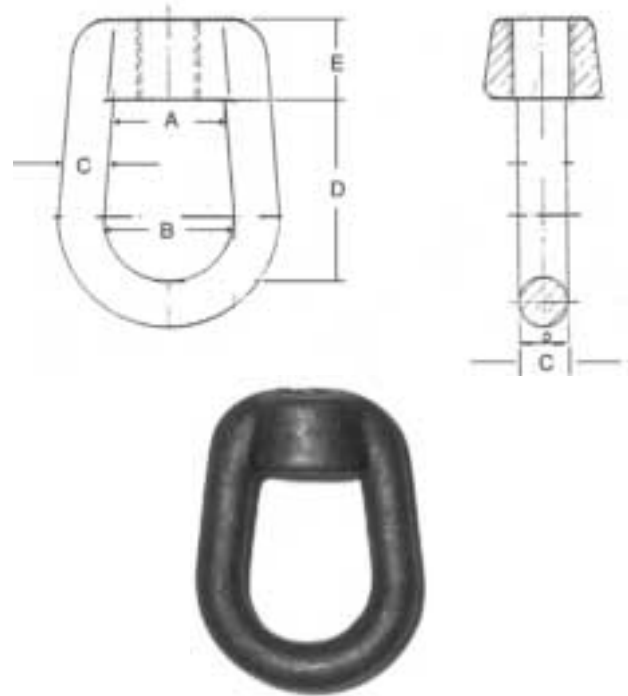


INDUSTRIAL HANGERS & CLAMPS

A 344 Weldless Eye Nut

Material:	Forged Steel
Application:	Designed for use on high temperature pipe runs where a flexible connection is required.
Ordering:	Specify figure number and rod size.
Approvals:	Complies with manufacturers' Standardization Society SP - 69 TYPE 16.



A 344 EYE NUT

SIZE	A		B		C		D		E		Max Rec Load		Box Qty	
	mm	mm	mm	mm	mm	mm	mm	mm	650°F	750°F				
3/8	10	1	25	1-3/8	35	1/2	13	2	50	7/8	22	730	572	1
1/2	13	1-1/8	29	1-3/8	35	1/2	13	2	50	7/8	22	1,350	1,057	1
5/8	16	1-1/8	29	1-3/8	35	1/2	13	2	50	7/8	22	2,160	1,692	1
3/4	19	1-1/8	29	1-3/8	35	1/2	13	2	50	7/8	22	3,230	2,530	1
7/8	22	1-1/2	38	1-7/8	48	3/4	19	2-5/8	67	1-1/8	29	4,480	3,508	1
1	25	1-1/2	38	1-7/8	48	3/4	19	2-5/8	67	1-1/8	29	5,900	4,620	1
1-1/8	29	1-5/8	41	2-1/4	57	1	25	3-1/4	83	1-3/8	35	9,500	7,440	1
1-1/4	32	1-5/8	41	2-1/4	57	1	25	3-1/4	83	1-3/8	35	13,800	10,807	1
1-1/2	38	1-5/8	41	2-3/8	60	1	25	3-1/2	89	1-3/8	35	18,600	14,566	1
2	50	4	102	4	102	1-1/2	38	6-1/4	159	2-1/4	57	24,600	19,265	1

